

# MULTI/JOINT® PE adaptor

» The ideal restraint mechanical and weldable connection »

Looking for a safe and simple solution that enables you to make a transition from PE100 to all other piping materials? Looking for a safe connection, which decreases the risk of leakages? With the MULTI/JOINT® PE adaptor, a quick and reliable restraint connection can be made. It is the ideal restraint mechanical and weldable connection for swift, simple and cost effective repairs and extensions of your network.

## Combined advantages

The MULTI/JOINT® PE adaptor enables restraint connections from various pipe materials to polyethylene pipes. Suitable for applications in gas (up to 8 bar PFA) and water (up to 16 bar PFA). This transition fitting combines the advantages of PE 100 pipe (SDR11) with the MULTI/JOINT® principle. On the mechanical connection side of the adaptor you can find the well known MULTI/JOINT® with its wide range restraint technology. Enabling you to make mechanical connections on Ductile (Cast) Iron, Steel, PVC, AC and PE pipe material. The other side of the fitting is a prefabricated PE 100 pipe. A restraint connection can easily be made with ELGEF® Plus electro fusion couplings or butt fusion. The PE adapter is a time and stock saving alternative, saving considerably on your total costs.



» Quick, simple and safe connections of PE to other materials »

## Safe and reliable

Safety is one of the most important topics in gas and water distribution lines. Installing a reliable connection is therefore essential. For the manufacturing process of the MULTI/JOINT® PE adaptor we use the most reliable connection method, that fully complies with the high safety requirements. You can easily connect the prefabricated PE 100 pipe by electro fusion or butt fusion. With these jointing techniques you build a leak free system, creating peace of mind.

## Quick, simple and cost efficient

The MULTI/JOINT® PE adaptor can easily be installed without the use of extra accessories. The downtime of the network is limited to a minimum and the distribution of gas and water to the end customer is continued as soon as possible. A large variety of connection possibilities is possible with the prefabricated polyethylene pipe ranging from d63 up to and including d315. The MULTI/JOINT® PE adaptor can replace the traditional Steel x PE transition pieces, therefore no longer requiring a certified steel welder on site.



» Technical specifications »

## Specifications MULTI/JOINT® PE adaptor

Body	Ductile cast iron GGG45, in accordance with EN-GJS-450-10.
Clamp ring	Ductile cast iron GGG45, in accordance with EN-GJS-450-10.
Coating	Resicoat® epoxy coating, type RT 9000 R4. Color red (RAL 3003). Minimum layer thickness 250 micron, in accordance with GSK-register.
Varioseal® rubber gasket	Water and gas: NBR in accordance with EN 682. Potable water: EPDM in accordance with EN681-1.
Working temperature	-5°C - +50°C.
Uni/Fiks® ring	Wedge: POM (Polyoxymethylene). Topple: glass fibre filled polyamide.
Flekscores	Nakan GPM.
Fiksers®	Stainless steel A4 (AISI 316).
Uni/Fiksers®	Stainless steel A4 (AISI 316)
Bolts and nuts	Stainless steel A2 (AISI 304). To prevent galling bolts are teflon coated and nuts are galvanized and passivated. Optional: bolts and nuts in stainless steel A4 (AISI 316).
Washers	Stainless steel A2 (AISI 304).
Working pressures	Non-restraint: up to 25 bar PFA water and up to 8 bar PFA gas. Restraint: up to 16 bar PFA water and up to 8 bar PFA gas.

DN	MULTI/JOINT® 3067		
	range (mm)	PE diameter (mm)	PE piece length (mm)
DN65	69 - 90	63	429,0
DN65	69 - 90	75	460,7
DN80	84 - 105	90	457,8
DN100	104 - 132	90	397,0
DN100	104 - 132	110	397,0
DN100	104 - 132	125	445,5
DN125	132 - 155	110	390,0
DN125	132 - 155	125	390,0
DN125	132 - 155	140	443,0
DN150	154 - 192	160	364,0
DN150	154 - 192	180	430,0

MULTI/JOINT® 3067 Plus			
DN200	192 - 232	200	333,0
DN200	192 - 232	225	422,0
DN250	267 - 310	250	294,0
DN250	267 - 310	280	408,2
DN300	315 - 356	315	400,3

## Nominal angularity\*



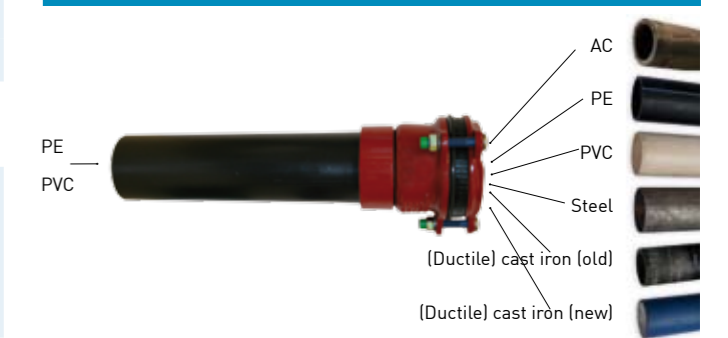
\* based on the middle of the coupling range

## Insert stiffener

In case of a mechanical connection on PE or PVC pipes, always use an insert stiffener.



## Universal fitting connecting PE/PVC



## → Fields of application

- Gas distribution networks
- Water distribution networks
- Water transport lines
- Industrial applications
- Repair & maintenance

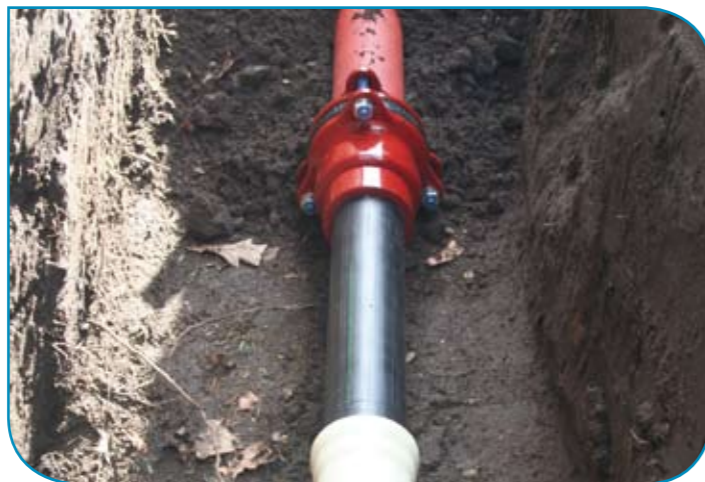


» The maintenance free solution »



### → Your benefits

- Swift and simple installation, saving time and installation costs
- Suitable for all pipe materials such as steel, AC, (ductile) cast iron, PVC and PE
- No steel welder required
- Less transitions, meaning less risk of leakages
- Reusable, saving stock and cost
- Maintenance free, design life expectancy of 50 years
- Alternative to traditional steel x PE piece



### Quality and maintenance free

The body and clamp ring of the MULTI/JOINT® PE adaptor are made of high grade ductile cast iron, which is protected from corrosion by Resicoat®, a fusion bonded epoxy coating. This makes the PE adaptor resistant to weathering, environmental influences and suitable for use in gas and water networks. The design life expectancy of the PE adaptor is 50 years, thanks to its maintenance free nature. Interferences and repairs are kept to a minimum, ensuring a constant supply of gas and water to the end user.

+GF+

## Georg Fischer Waga N.V. → worldwide at home



### Our solutions

MULTI/JOINT® 3000 wide-range couplings restraint - non restraint DN50 - DN150 (2" - 6")				
MULTI/JOINT® 3000 Plus wide-range couplings restraint - non restraint DN200 - DN300 (8" - 12")				
MULTI/JOINT® XL wide-range couplings non restraint DN300 - DN600 (12" - 24")				
ST-System dedicated couplings and flange adaptors with or without reduction DN50 - DN2800 (2" - 112")				
FGR stainless steel couplings restraint - non restraint DN25 - DN2000 (1" - 80")				
Plast/Join® mechanical connection for plastic pipes restraint - non restraint d63 - d315				
Multi/Clamp stainless steel repair clamps, tapping tees and saddles DN25 - DN1000 (1" - 40")				
Multi/Saddle Plus wide-range tapping saddle with or without shut-off mechanism DN60 - DN300 (2 1/2" - 12")				
Others W400/W410 drilling device WALV leak clamp DN80 - DN1200 (3" - 48") MULTI/JOINT® PE adaptor				

Local distributor

### Our expertise

Georg Fischer Waga N.V. is the jointing technology specialist, offering a complete range of products that have been used in the water & gas market for many years. No matter how complicated your connection problem is, we can offer you a solution.

- Innovator and market leader in connection technology
- Extensive application know-how and know-why
- Decades of experience
- Long-term system solutions
- "One stop" shopping
- Local support worldwide

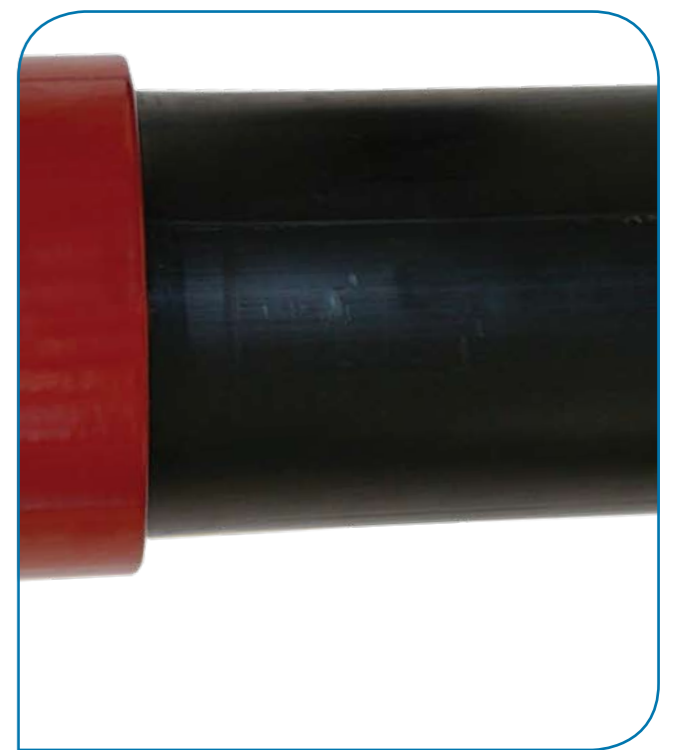
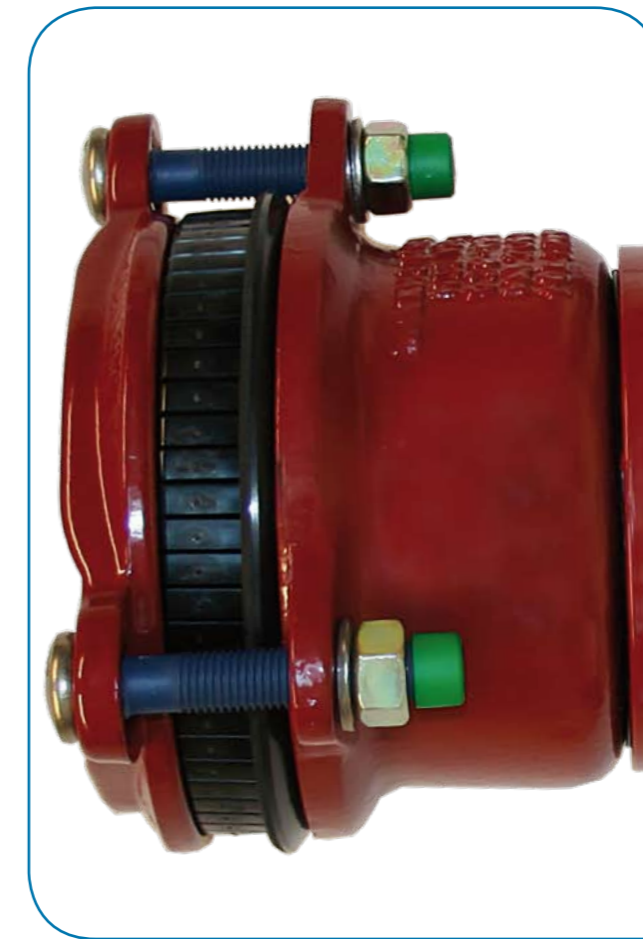
### Adding Quality to People's Lives

The technical data are not binding and not expressly warranted characteristics of the goods. They are subject to change. Please consult our General Conditions of Supply.

Georg Fischer Waga N.V.  
Lange Veenteweg 19, 8161 PA / P.O. box 290, 8160 AG Epe,  
Netherlands T +31 (0) 578 678 378 / F +31 (0) 578 620 848  
waga.ps@georgfischer.com / www.waga.nl

+GF+

GEORG FISCHER  
PIPING SYSTEMS



### MULTI/JOINT® PE adaptor

The solution for  
transitions from PE  
to other materials  
DN65 - DN300

+GF+

GEORG FISCHER  
PIPING SYSTEMS