

# Signet 5075 Totalizing Flow Monitor



Check out the 9900 Transmitter for your single channel needs

Member of the ProPoint® Family of Monitors



The Signet 5075 Totalizing Flow Monitor features a traditional analog dial for flow rate at a glance while the backlit LCD provides precision flow rate, total volume and programming information.

Significant features of this 5075 include user-selectable analog dials, permanent and resettable totalizers and pulse outputs at sensor frequency and at totalizer scale. The 5075 is powered by virtually any 12 to 24 VDC or VAC  $\pm 10\%$ , regulated power source.

Connect to any of Signet's flow sensors for a classic flow meter system.

## Features

- Permanent and resettable totalizers
- Tamper proof security code
- Non-volatile memory
- Simple push-button operation
- Pulse outputs at sensor frequency and at total volume
- 1/4 DIN, NEMA 4X/IP65
- Remote totalizer reset



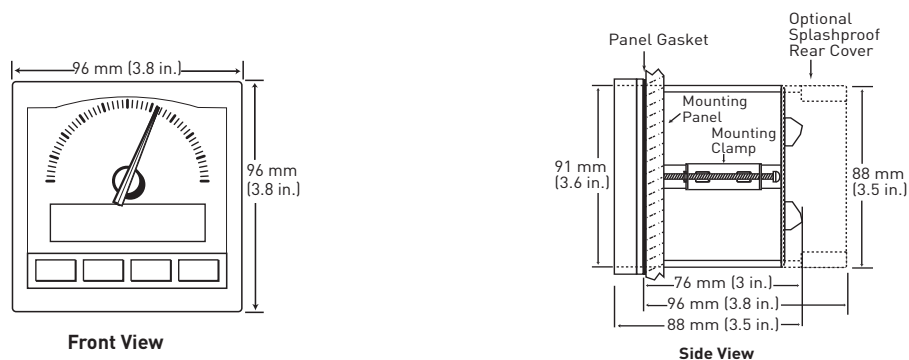
## Applications

- Wastewater Flow Accumulation
- Water Treatment Systems
- Filtration Systems
- Feed Pump Pulsing
- Fertigation
- Irrigation
- Commercial Pools & Spas
- Groundwater Remediation
- HVAC
- Process Flow Monitoring
- UPW Distribution
- Demineralizer Regeneration
- Process Cooling Water
- Neutralization Systems

# Specifications

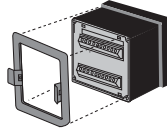
General		
Operating Range	0.5 Hz to 10 kHz	
Accuracy	± 0.5% of reading	
Display	Analog	Six slide-in dial ranges - 0 to 2, 4, 6, 8, 10 & 100 w/multipliers
	Digital	Backlit LCD, 2x16 alphanumeric character
Additional Functions	Sensor pulse output, volumetric pulse output, remote totalizer reset	
Materials		
Enclosure	ABS Plastic	
Keypad	Silicone Rubber	
Panel and Case Gasket	Neoprene	
Window	Hard-coated polycarbonate	
Electrical		
Power Requirements	12 to 24 VAC or VDC ±10%, regulated recommended, 50 to 60 Hz, 10W max.	
Environmental		
Operating Temperature	-10 °C to 55 °C	14 °F to 131 °F
Relative Humidity	0 to 95%, non-condensing	
Enclosure	NEMA 4X/IP65 (front face only)	
Shipping Weight		
	0.08 kg	1.8 lb
Standards and Approvals		
	CE, UL, CUL	
	China RoHS	
	Manufactured under ISO 9001 for Quality and ISO 14001 for Environmental Management	

# Dimensions

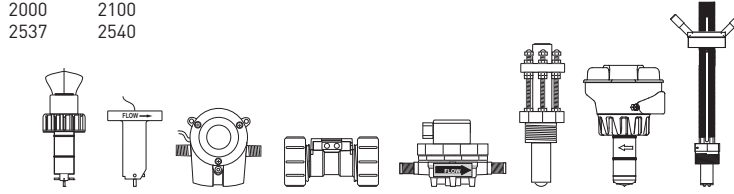


Panel Mount

**Signet 5075 Flow Instrument**  
includes mounting bracket  
and panel gasket



Signet Sensors  
515 525  
2507 2536  
2551 2552



Signet fittings or end connectors as required  
See individual sensor catalog pages for required sensor mounting accessories.

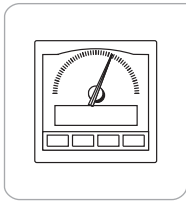
All sold separately

**Ordering Notes**

- 1) Panel cutout should be 92 x 92 mm (3.62 x 3.62 in.)
- 2) Reversible dials are included and are scaled from 0 to 2, 0 to 4, 0 to 6, 0 to 8, 0 to 10, and 0 to 100.
- 3) Optional splashproof rear cover can be ordered separately.
- 4) Flow rate unit tags are provided for labeling dials appropriately in units of gpm, lpm, etc.

Please refer to **Wiring, Installation, and Accessories** sections for more information.

## Ordering Information



Mfr. Part No.	Code	Description
3-5075	<b>198 825 007</b>	5075 Totalizing Flow Monitor

## Accessories and Replacement Parts

Mfr. Part No.	Code	Description
<b>Mounting</b>		
3-5000.395	<b>198 840 227</b>	Splashproof rear cover kit
3-5000.598	<b>198 840 225</b>	Surface mount bracket (panel mount only)
3-0000.596	<b>159 000 641</b>	Heavy duty wall mount bracket (panel mount only)
3-5000.399	<b>198 840 224</b>	5 x 5 inch adapter plate to retrofit older Signet installations
<b>Liquid Tight Connectors</b>		
3-9000.392	<b>159 000 368</b>	Liquid tight connector kit (includes 3 connectors)
3-9000.392-1	<b>159 000 839</b>	Liquid tight connector kit, NPT (1 connector)
3-9000.392-2	<b>159 000 841</b>	Liquid tight connector kit, PG 13.5 (1 connector)
<b>Replacement Parts</b>		
3-5000.390	<b>159 000 323</b>	Installation kit (ProPoint® screws, clamps, mounting brackets)
3-5000.525-1	<b>198 840 226</b>	Bezel, 5000 series
3-5500.390	<b>159 000 347</b>	Dial kit
3-5500.611	<b>159 000 348</b>	Unit tags
3-5000.397	<b>159 000 326</b>	5000 series window (window, keypad, & screw)
<b>Other</b>		
3-5000.398	<b>159 000 646</b>	Protective overlay kit (10 pcs.)
3-5000.075	<b>159 000 321</b>	110V/24 VAC transformer
6400-9001	<b>159 001 466</b>	Intrinsic safety barrier (2 required)