

Signet 5700 pH/ORP Monitor



Check out the 9900 Transmitter for your single channel needs

Member of the ProPoint® Family of Monitors



Analog and Digital Display

The Signet 5700 pH/ORP Monitor is a versatile and intelligent instrument that recognizes the type of sensor connected, either pH or ORP, then automatically sets itself for the corresponding display and functionality. During EasyCal operation, the monitor automatically recognizes standard buffers/test solutions, thereby shortening and simplifying routine calibration procedures.

Two programmable relays and one scaleable 4 to 20 mA output are included, and the four-button keypad arrangement with intuitive software design is very user-friendly. The monitors require 12 to 24 volts $\pm 10\%$, regulated, AC or DC, and can be used with many Signet pH/ORP electrodes and preamplifiers, or with electrodes from other manufacturers by using the 2721 Preamplifier. Several useful accessories are available, including the optional splashproof rear cover kit.

Features

- Displays pH/temp/mV or ORP/mV
- EasyCal simplifies routine calibration
- Simple push-button operation
- Intuitive software design
- Scaleable 4 to 20 mA output internally powered (active)
- Two programmable relays
- Dual proportional control capability
- Non-volatile memory
- Versatile low voltage power requirement



Applications

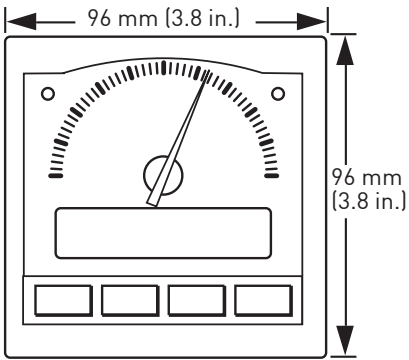
- Water & Wastewater Treatment
- Neutralization
- Scrubber Control
- Effluent Monitoring
- Surface Finishing
- Heavy Metal Removal and Recovery
- Toxics Destruction
- Sanitization Systems
- Pool & Spa Control
- Aquatic Animal Life Support Systems
- Process Control

Specifications

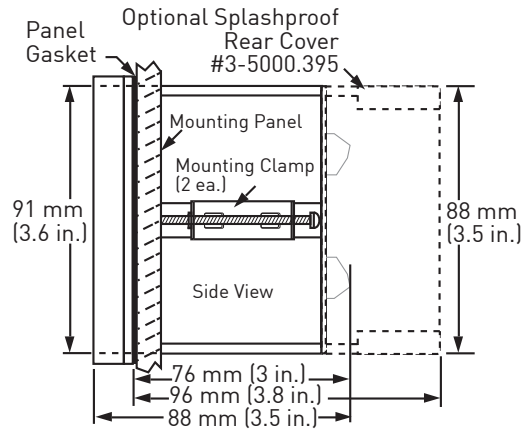
General				
Operating Range	pH	0 to 14 pH, optically isolated		
	Temp	-25 °C to 120 °C	-13 °F to 248 °F	
	ORP	-2,000 to +2,000 mV, optically isolated		
Accuracy	± 0.2% of scale			
Display	Analog	Reversible dial	0 to 14 pH or ±1000 mV	
	Digital	Backlit LCD, 2x16	alphanumeric character	
Materials				
Enclosure	ABS Plastic			
Keypad	Silicone Rubber			
Panel and Case Gasket	Neoprene			
Window	Hard-coated polycarbonate			
Electrical				
Power Requirements	12 to 24 VAC or DC ±10%, regulated recommended, 50 to 60 Hz, 10W max.			
Current Output	4 to 20 mA, non-isolated, active, internally powered			
Loop Impedance	350 Ω max. @ 12V	950 Ω max. @ 24V		
Accuracy	± 0.1%			
Alarm Contacts	Two SPDT relays	5A @ 30 VDC	5A @ 125 VAC	3A @ 250 VAC max.
	High/low/pulse programmable with adjustable hysteresis			
	Dual proportional control capability, maximum pulse rate 300 pulses/min.			
Environmental				
Operating Temperature	-10 °C to 55 °C	14 °F to 131 °F		
Relative Humidity	0 to 95%, non-condensing			
Enclosure	NEMA 4X/IP65 (front face only)			
Shipping Weight				
	0.82 kg	1.81 lb		
Standards and Approvals				
	CE, UL, CUL			
	China RoHS			
	Manufactured under ISO 9001 for Quality and ISO 14001 for Environmental Management			

Dimensions

Front View







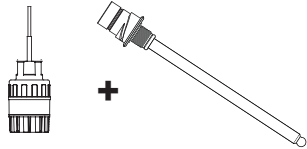

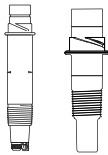
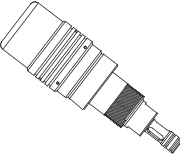
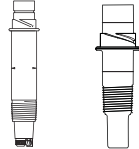

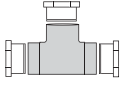
Side View



In-Line Installation

Wet-Tap Installation

Submersible Installation

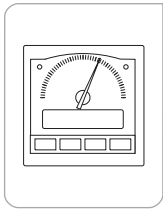
System Overview	Panel Mount	Panel Mount	Panel Mount
	Signet 5700 pH/ORP Monitor 	Signet 5700 pH/ORP Monitor 	Signet 5700 pH/ORP Monitor 
	Signet 2760 Pre-amplifier 	Signet 2760 Pre-amplifier with Signet Wet-Tap Electrode 2756 2757 	Signet 2760 Pre-amplifier with customer supplied pipe extension or conduit, 3/4 in. NPT or ISO 7/1-R 3/4 threads* 
	Signet Electrodes 2724-2726 2764-2767 2774-2777 2760 	Signet 3719 Wet-Tap 	Signet Electrodes 2724-2726 2764-2767 2774-2777 
Signet Fittings** 	GF Tees and Fittings see model 3719 for more info 	All sold separately	

*Refer to the Signet Submersion brochure located in the K-Factors Fittings and More Kit (3-0000-709) for installation suggestions and options.

** See fittings section for more information

*See fittings section for more information.

Ordering Information



Mfr. Part No.	Code	Description
3-5700	198 825 003	pH/ORP Monitor

Model 5700 Ordering Information

- 1) Panel cutout should be 92 x 92 mm (3.62 x 3.62 in.)
- 2) Reversible dials with standard ranges for pH and ORP are included with the instrument
- 3) An optional splashproof rear cover can be ordered separately if needed.
- 4) Protective overlays are available for the front panel.
- 5) Order RC filter kits to protect relays from voltage spikes.
- 6) To mount the unit onto a wall, use the heavy duty wall mount bracket.

Please refer to **Wiring, Installation, and Accessories** sections for more information.

Accessories and Replacement Parts

Mfr. Part No.	Code	Description
Mounting		
3-5000.395	198 840 227	Splashproof rear cover kit
3-5000.399	198 840 224	5 x 5 inch adapter plate to retrofit older Signet installations
3-5000.598	198 840 225	Surface mount bracket (panel mount only)
3-8050.392	159 000 640	¼ DIN retrofit adapter
3-0000.596	159 000 641	Heavy duty wall mount bracket (panel mount only)
Liquid Tight Connectors		
3-9000.392	159 000 368	Liquid tight connector kit for rear cover (3 connectors)
3-9000.392-1	159 000 839	Liquid tight connector kit, NPT (1 connector)
3-9000.392-2	159 000 841	Liquid tight connector kit, PG 13.5 (1 connector)
Other		
3-5000.390	159 000 323	Installation kit
3-5000.397	159 000 326	5000 series window kit
3-5000.525-1	198 840 226	Bezel, 5000 series
3-0700.390	198 864 403	pH buffer kit (1 each 4, 7, 10 pH buffer in powder form, makes 50 ml of each)
3-5000.398	159 000 646	Protective overlay kit (10 pcs)
3-8050.396	159 000 617	RC filter kit (for relay use), 2 per kit

3-5700.099 Rev G (10/11)

© Georg Fischer Signet LLC

3401 Aerojet Avenue, El Monte, CA 91731-2882 U.S.A. • Tel. (626) 571-2770 • Fax (626) 573-2057 • www.gfsignet.com • e-mail: signet.ps@georgfischer.com
 Specifications subject to change without notice. All rights reserved. All corporate names and trademarks stated herein are the property of their respective companies.