

Product Range

Butterfly Valve Type 567



List of Abbreviations

ANSI	American National Standard Institute
ASTM	American Society for Testing and Materials
BS	British Standard
DIN	Deutsche Industrie-Normen
ISO	International Standardization Organization
ABS	Acrylnitrile-Butadiene-Styrene
PVC-U	Polyvinyl chloride, unplasticized
PVC-C	Polyvinyl chloride, post-chlorinated
PP-H	Polypropylene, Homopolymeride
PE	Polyethylene
PVDF	Polyvinylidene fluoride
EPDM	Ethylene-Propylene-Rubber
FPM	Fluororubber, e.g. Viton®
PTFE	Polytetrafluoroethylene, e.g. Teflon®
d	Pipe outer diameter
DN	Nominal diameter
PN	Nominal pressure at 20 °C, water
kg	Weight in kilograms
®	Registered trademark

The technical data are not binding and not expressly warranted characteristics of the goods. They are subject to change. Our General Conditions of Sale apply.

Dimensions

All dimensions are given in mm.

Table of Contents

The new Butterfly Valve Type 567

Butterfly Valve Type 567 PVC-U

- bare shaft	5
- with hand lever/with reduction gear	6
- with hand lever, silicone free version	8
- with electric actuator type 140	9
- with pneumatic actuator type 240	13

Butterfly Valve Type 567 PVC-C

- bare shaft	16
- with hand lever/with reduction gear	17
- with electric actuator type 140	19
- with pneumatic actuator type 240	23

Butterfly Valve Type 567 ABS

- bare shaft	26
- with hand lever/with reduction gear	27
- with electric actuator type 140	29
- with pneumatic actuator type 240	33

Butterfly Valve Type 567 PP-H

- bare shaft	36
- with hand lever/with reduction gear	37
- with hand lever, silicone free version	39
- with electric actuator type 140	40
- with pneumatic actuator type 240	44

Butterfly Valve Type 567 SYGEF Standard

- bare shaft	47
- with hand lever/with reduction gear	48
- with electric actuator type 140	50
- with pneumatic actuator type 240	54

Assembly parts electric and pneumatic, actuators intermediate elements

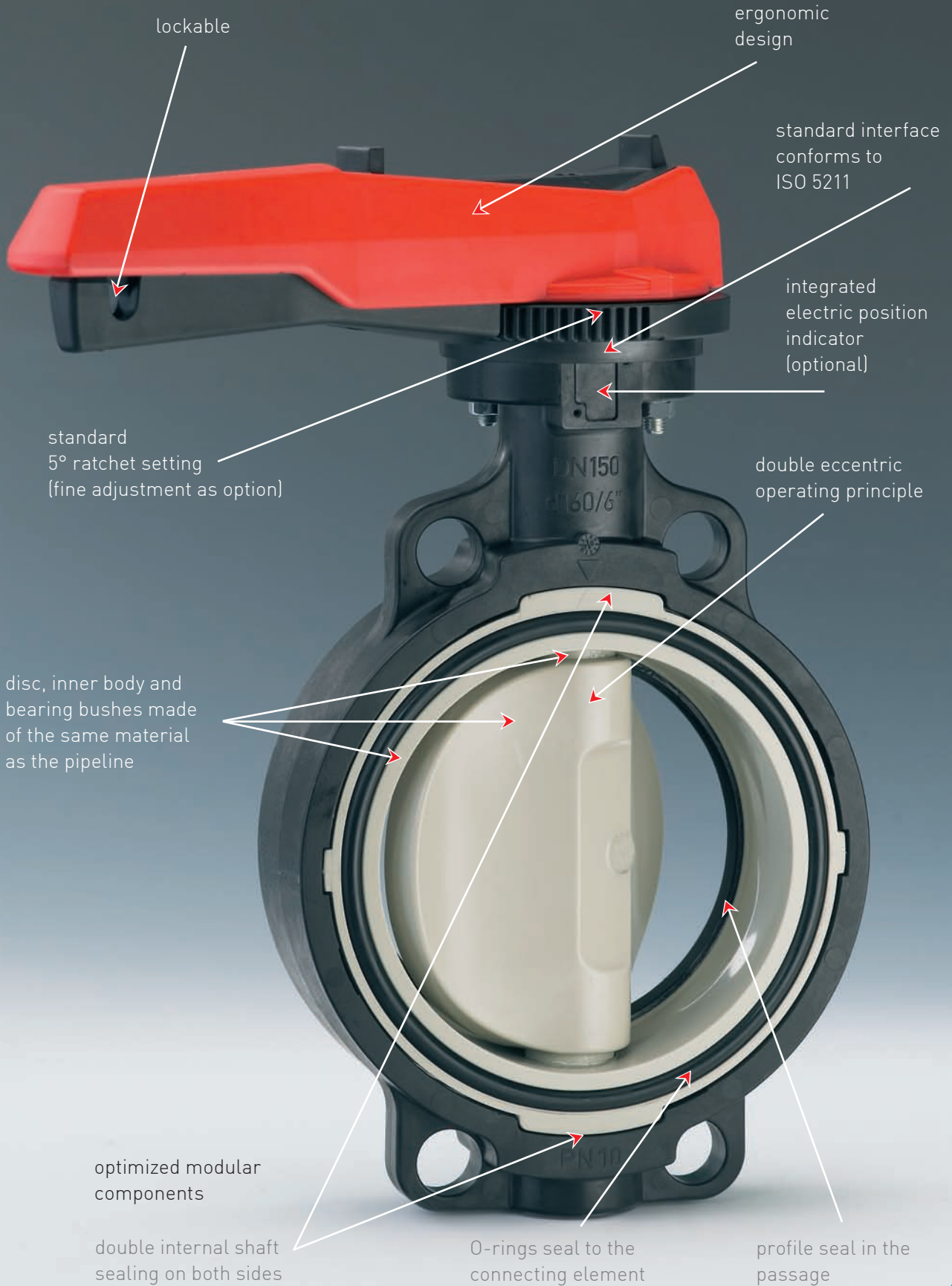
	57
--	----

Flange adaptor	64
----------------	----

Position indicator	74
--------------------	----

Spare parts	75
-------------	----

➤ A winner in every detail



One system - many options

Georg Fischer presents the new 567/568 type series of butterfly valves with a comprehensive range of products and a multitude of interesting combination possibilities.

We can offer you, for example, manual valves with hand lever or reduction gear. The program also includes pneumatically or electrically actuated valves from DN50 to DN300.

Our system's modular design principle allows you to exchange individual system components – fast, easily and at very little expense.

You also have a choice of materials: PVC-U, PVC-C, ABS, or b-PP-H and PVDF.

Our standard sealing materials are EPDM and FPM, but other materials are available on request.

All the customary installation pipe standards are supplied:

- metric: DIN, EN, ISO
- inch: BS, ASTM
- JIS (only wafer-type valves)

With this wide range of products to choose from you can always be sure of having the best possible solution for your application.

The new butterfly valves type 567/568 from Georg Fischer

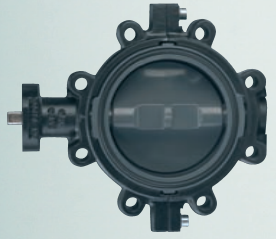
Piping Systems conform to the following international standards:

prEN ISO 16136
Industrial valves – butterfly valves in thermoplastic materials
ISO9393

Thermoplastic valves – pressure test methods and requirements
EN558

Face-to-face length of butterfly valves corresponds to EN558

Approvals pending:
DIBt, NSF61, TA Luft



Standard
Lug-type butterfly valve/
end installation
Type 568

Standard
Wafer-type butterfly
valve
Type 567

Butterfly valve
with fine adjustment

Butterfly valve
with reduction gear

Butterfly valve
with pneumatic actuator
– single acting

Butterfly valve
with pneumatic actuator
– double acting; optional
manual override

Butterfly valve with
electric actuator;
optional manual override
and electric position
indicator

➤ Strong features for strong arguments

Now in the material
PVDF available
Higher nominal pressure
by improved design

standard interface
per ISO 5211

disc, inner body and
bearing bushes made
of the same material as
the pipeline.
Your benefit: better re-
sistance to corrosion

robust outer body of PP-GF
30; connecting dimensions
according to
ISO, BS, ANSI, JIS

optimized modular
components:

profile seal in the
passage

special seal to the
connecting element

double eccentric
operating principle



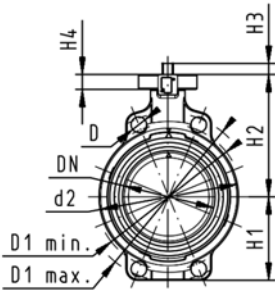
Butterfly valves PVC-U

Butterfly valve type 567 PVC-U Bare shaft

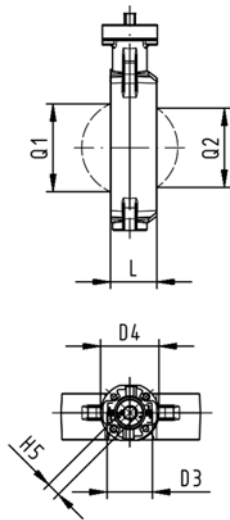


Model:

- Connecting dimension: ISO 7005 PN 10, EN 1092 PN 10, DIN 2501 PN 10, ANSI/ASME B 16.5 Class 150, BS 1560: 1989, BS 4504, JIS B 2220
- Overall length according to EN 558, ISO 5752
- Interface F07 for the dimensions DN50-200 according to DIN/ISO 5211
- Interface F10 for the dimensions DN250-300 according to DIN/ISO 5211



d [mm]	DN [mm]	Inch	PN	kv-value ($\Delta p=1$ bar) [l/min]	EPDM Code	FPM Code
63	50	2	10	1470	161 567 802	161 567 822
75	65	2 1/2	10	2200	161 567 803	161 567 823
90	80	3	10	3000	161 567 804	161 567 824
110	100	4	10	6500	161 567 805	161 567 825
140	125	5	10	11500	161 567 806	161 567 826
160	150	6	10	16600	161 567 807	161 567 827
225	200	8	10	39600	161 567 808	161 567 828
280	250	10	10	55200	161 567 809	161 567 829
315	300	12	10	80000	161 567 810	161 567 830



d [mm]	D [mm]	D1 min. [mm]	D1 max. [mm]	d2 [mm]	D3 [mm]	D4 [mm]	H [mm]	H1 [mm]	H2 [mm]	H3 [mm]	H4 [mm]	H5 [mm]	L [mm]	Q1 [mm]
63	19	120.0	125.0	104	70	90	222	77	134	27	23	11	45	40
75	19	139.7	145.0	115	70	90	235	83	140	27	23	11	46	54
90	19	150.0	160.0	131	70	90	247	89	146	27	23	11	49	67
110	19	175.0	190.5	161	70	90	287	104	167	16	23	14	56	88
140	23	210.0	215.9	187	70	90	313	117	181	16	23	14	64	113
160	24	241.3	241.3	215	70	90	335	130	189	19	23	17	72	139
225	23	290.0	295.0	267	70	90	387	158	210	19	23	17	73	178
280	25	353.0	362.0	329	102	125	509	205	264	40	23	22	113	210
315	25	400.0	432.0	379	102	125	553	228	285	40	23	22	113	256

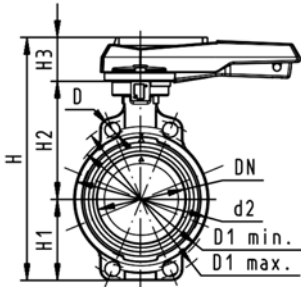
d [mm]	Q2 [mm]
63	
75	35
90	50
110	74
140	97
160	123
225	169
280	207
315	253



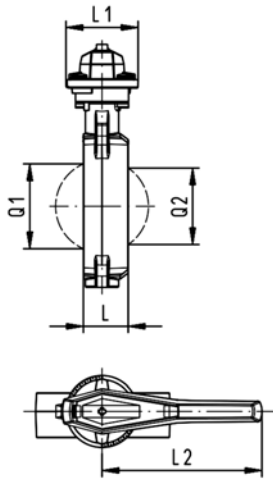
Butterfly valve type 567 PVC-U Hand lever with ratchet settings

Model:

- Connecting dimension: ISO 7005 PN 10, EN 1092 PN 10, DIN 2501 PN 10, ANSI/ASME B 16.5 Class 150, BS 1560: 1989, BS 4504, JIS B 2220
- Overall length according to EN 558, ISO 5752
- We recommend for the dimensions DN250 and DN300 only 6 bar maximum system pressure for the hand lever version



d [mm]	DN [mm]	Inch	PN	kv-value ($\Delta p=1$ bar) [l/min]	EPDM Code	FPM Code
63	50	2	10	1470	161 567 002	161 567 022
75	65	2 ½	10	2200	161 567 003	161 567 023
90	80	3	10	3000	161 567 004	161 567 024
110	100	4	10	6500	161 567 005	161 567 025
140	125	5	10	11500	161 567 006	161 567 026
160	150	6	10	16600	161 567 007	161 567 027
225	200	8	10	39600	161 567 008	161 567 028
280	250	10	10	55200	161 567 009	161 567 029
315	300	12	10	80000	161 567 010	161 567 030



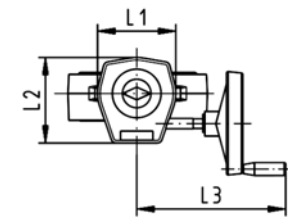
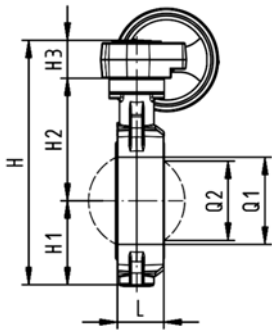
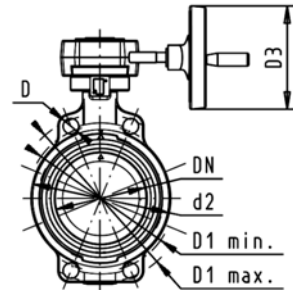
d [mm]	D [mm]	D1 min. [mm]	D1 max. [mm]	d2 [mm]	H [mm]	H1 [mm]	H2 [mm]	H3 [mm]	L [mm]	L1 [mm]	L2 [mm]	Q1 [mm]	Q2 [mm]
63	19	120.0	125.0	104	264	77	134	54	45	106	205	40	
75	19	139.7	145.0	115	277	83	140	54	46	106	205	54	35
90	19	150.0	160.0	131	289	89	146	54	49	106	205	67	50
110	19	175.0	190.5	161	325	104	167	55	56	106	255	88	74
140	23	210.0	215.9	187	352	117	181	55	64	106	255	113	97
160	24	241.3	241.3	215	373	130	189	55	72	106	255	139	123
225	23	290.0	295.0	267	435	158	210	67	73	140	408	178	169
280	25	353.0	362.0	329	554	205	264	85	113	149	408	210	207
315	25	400.0	432.0	379	598	228	285	85	113	149	408	256	253



Butterfly valve type 567 PVC-U Reduction gear with handwheel

Model:

- Connecting dimension: ISO 7005 PN 10, EN 1092 PN 10, DIN 2501 PN 10, ANSI/ASME B 16.5 Class 150, BS 1560: 1989, BS 4504, JIS B 2220
- Overall length according to EN 558, ISO 5752



d [mm]	DN [mm]	Inch	PN	kv-value ($\Delta p=1$ bar) [l/min]	EPDM Code	FPM Code
63	50	2	10	1470	161 567 042	161 567 062
75	65	2 1/2	10	2200	161 567 043	161 567 063
90	80	3	10	3000	161 567 044	161 567 064
110	100	4	10	6500	161 567 045	161 567 065
140	125	5	10	11500	161 567 046	161 567 066
160	150	6	10	16600	161 567 047	161 567 067
225	200	8	10	39600	161 567 048	161 567 068
280	250	10	10	55200	161 567 049	161 567 069
315	300	12	10	80000	161 567 050	161 567 070

d [mm]	D [mm]	D1 min. [mm]	D1 max. [mm]	d2 [mm]	D3 [mm]	H [mm]	H1 [mm]	H2 [mm]	H3 [mm]	L [mm]	L1 [mm]	L2 [mm]	L3 [mm]	Q1 [mm]
63	19	120.0	125.0	104	160	278	77	134	60	45	120	132	236	40
75	19	139.7	145.0	115	160	291	83	140	60	46	120	132	236	54
90	19	150.0	160.0	131	160	303	89	146	60	49	120	132	236	67
110	19	175.0	190.5	160	160	339	104	167	60	56	120	132	236	88
140	23	210.0	215.9	187	160	365	117	181	60	64	120	132	236	113
160	24	241.3	241.3	215	160	387	130	189	60	72	120	132	236	139
225	23	290.0	295.0	267	160	436	158	210	60	73	120	132	236	178
280	25	353.0	362.0	329	160	529	205	264	60	113	134	151	261	210
315	25	400.0	432.0	379	160	573	228	285	60	113	134	151	261	256

d [mm]	Q2 [mm]
63	
75	35
90	50
110	74
140	97
160	123
225	169
280	207
315	253

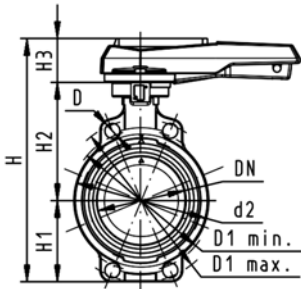
Butterfly valves PVC-U SF

Butterfly valve type 567 PVC-U SF Hand lever with ratchet settings

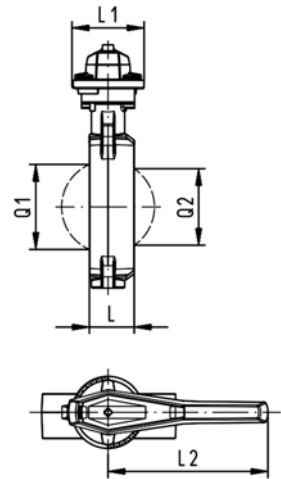


Model:

- Silicone free / paint-compatible
- Connecting dimension: ISO 7005 PN 10, EN 1092 PN 10, DIN 2501 PN 10, ANSI/ASME B 16.5 Class 150, BS 1560: 1989, BS 4504, JIS B 2220
- Overall length according to EN 558, ISO 5752



d [mm]	DN [mm]	Inch	PN	kv-value ($\Delta p=1$ bar) [l/min]	EPDM Code	FPM Code
63	50	2	10	1470	161 567 402	161 567 422
75	65	2 ½	10	2200	161 567 403	161 567 423
90	80	3	10	3000	161 567 404	161 567 424
110	100	4	10	6500	161 567 405	161 567 425
140	125	5	10	11500	161 567 406	161 567 426
160	150	6	10	16600	161 567 407	161 567 427
225	200	8	10	39600	161 567 408	161 567 428



d [mm]	D [mm]	D1 min. [mm]	D1 max. [mm]	d2 [mm]	H [mm]	H1 [mm]	H2 [mm]	H3 [mm]	L [mm]	L1 [mm]	L2 [mm]	Q1 [mm]	Q2 [mm]
63	19	120.0	125.0	104	264	77	134	54	45	106	205	40	
75	19	139.7	145.0	115	277	83	140	54	46	106	205	54	35
90	19	150.0	160.0	131	289	89	146	54	49	106	205	67	50
110	19	175.0	190.5	161	325	104	167	55	56	106	255	88	74
140	23	210.0	215.9	187	352	117	181	55	64	106	255	113	97
160	24	241.3	241.3	215	373	130	189	55	72	106	255	139	123
225	23	290.0	295.0	267	435	158	210	67	73	140	408	178	169

Butterfly valves electric PVC-U

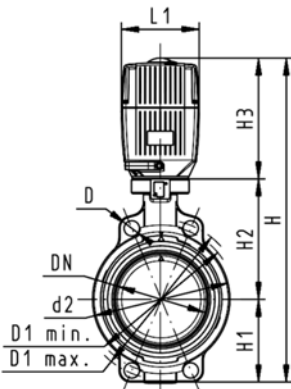
Butterfly valve type 140 PVC-U 100-230V Without manual override



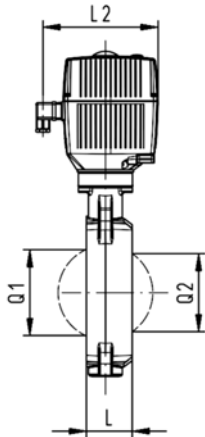
Model:

- Connecting dimension: ISO 7005 PN 10, EN 1092 PN 10, DIN 2501 PN 10, ANSI/ASME B 16.5 Class 150, BS 1560: 1989, BS 4504, JIS B 2220
- Overall length according to EN 558, ISO 5752
- Voltage 100-230 V, 50-60 Hz
- Control time 15 s/90°<) EA31
- Control time 25s/90°<) EA42
- Control range 90°<)
- Actuator with integrated emergency manual override standard
- The dimension DN300 on request

d [mm]	DN [mm]	Inch	PN	kv-value (Δp=1 bar) [l/min]	EPDM Code	FPM Code
63	50	2	10	1470	199 140 042	199 140 062
75	65	2 ½	10	2200	199 140 043	199 140 063
90	80	3	10	3000	199 140 044	199 140 064
110	100	4	10	6500	199 140 045	199 140 065
140	125	5	10	11500	199 140 046	199 140 066
160	150	6	10	16600	199 140 047	199 140 067
225	200	8	10	39600	199 140 048	199 140 068
280	250	10	6	55200	199 140 049	199 140 069
315	300	12	4	80000	199 140 050	199 140 070



d [mm]	Actuator unit type	D [mm]	D1 min. [mm]	D1 max. [mm]	d2 [mm]	H [mm]	H1 [mm]	H2 [mm]	H3 [mm]	L [mm]	L1 [mm]	L2 [mm]	Q1 [mm]
63	EA-31	19	120.0	125.0	104	400	77	134	188	45	122	180	40
75	EA-31	19	139.7	145.0	115	413	83	140	188	46	122	180	54
90	EA-31	19	150.0	160.0	131	428	89	146	188	49	122	180	67
110	EA-31	19	175.0	190.5	161	460	104	167	188	56	122	180	88
140	EA-31	23	210.0	215.9	187	487	117	181	188	64	122	180	113
160	EA-31	24	241.3	241.3	215	508	130	189	188	72	122	180	139
225	EA-42	23	290.0	295.0	267	575	158	210	208	73	122	180	178
280	EA-42	25	353.0	362.0	329	677	205	264	208	113	122	180	210
315	EA-42	25	400.0	432.0	379	721	228	285	208	113	122	180	256



d [mm]	Q2 [mm]
63	
75	35
90	50
110	74
140	97
160	123
225	169
280	207
315	253

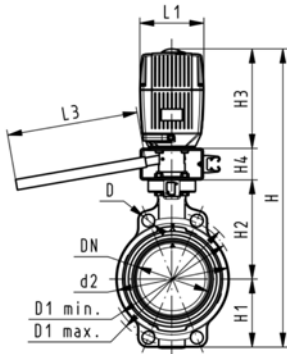


Butterfly valve type 140 PVC-U 100-230V With manual override

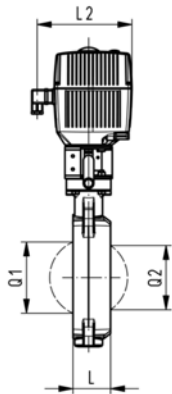
Model:

- Connecting dimension: ISO 7005 PN 10, EN 1092 PN 10, DIN 2501 PN 10, ANSI/ASME B 16.5 Class 150, BS 1560: 1989, BS 4504, JIS B 2220
- Overall length according to EN 558, ISO 5752
- Voltage 100-230 V, 50-60 Hz
- Control time 15 s/90°<) EA31
- Control time 25s/90°<) EA42
- Control range 90°<)
- Actuator with integrated emergency manual override standard

d [mm]	DN [mm]	Inch	PN	kv-value ($\Delta p=1$ bar) [l/min]	EPDM Code	FPM Code
63	50	2	10	1470	199 140 002	199 140 022
75	65	2 1/2	10	2200	199 140 003	199 140 023
90	80	3	10	3000	199 140 004	199 140 024
110	100	4	10	6500	199 140 005	199 140 025
140	125	5	10	11500	199 140 006	199 140 026
160	150	6	10	16600	199 140 007	199 140 027
225	200	8	10	39600	199 140 008	199 140 028



d [mm]	Actuator unit type	D [mm]	D1 min. [mm]	D1 max. [mm]	d2 [mm]	H [mm]	H1 [mm]	H2 [mm]	H3 [mm]	H4 [mm]	L [mm]	L1 [mm]	L2 [mm]
63	EA-31	19	120.0	125.0	104	460	77	134	188	60	45	122	180
75	EA-31	19	139.7	145.0	115	473	83	140	188	60	46	122	180
90	EA-31	19	150.0	160.0	131	488	89	146	188	60	49	122	180
110	EA-31	19	175.0	190.5	161	520	104	167	188	60	56	122	180
140	EA-31	23	210.0	215.9	187	547	117	181	188	60	64	122	180
160	EA-31	24	241.3	241.3	215	568	130	189	188	60	72	122	180
225	EA-42	23	290.0	295.0	267	635	158	210	208	60	73	122	180



d [mm]	L3 [mm]	Q1 [mm]	Q2 [mm]
63	250	40	
75	250	54	35
90	250	67	50
110	250	88	74
140	250	113	97
160	250	139	123
225	250	178	169

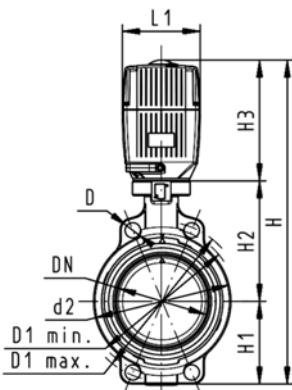


Butterfly valve type 140 PVC-U 24V Without manual override

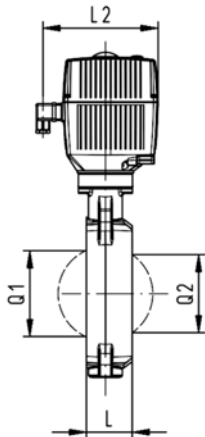
Model:

- Connecting dimension: ISO 7005 PN 10, EN 1092 PN 10, DIN 2501 PN 10, ANSI/ASME B 16.5 Class 150, BS 1560: 1989, BS 4504, JIS B 2220
- Overall length according to EN 558, ISO 5752
- Voltage 24 V AC/DC
- Control time 15 s/90°<) EA31
- Control time 25s/90°<) EA42
- Control range 90°<)
- Actuator with integrated emergency manual override standard
- The dimension DN300 on request

d [mm]	DN [mm]	Inch	PN	kv-value ($\Delta p=1$ bar) [l/min]	EPDM Code	FPM Code
63	50	2	10	1470	199 140 122	199 140 142
75	65	2 ½	10	2200	199 140 123	199 140 143
90	80	3	10	3000	199 140 124	199 140 144
110	100	4	10	6500	199 140 125	199 140 145
140	125	5	10	11500	199 140 126	199 140 146
160	150	6	10	16600	199 140 127	199 140 147
225	200	8	10	39600	199 140 128	199 140 148
280	250	10	6	55200	199 140 129	199 140 149
315	300	12	4	80000	199 140 130	199 140 150



d [mm]	Actuator unit type	D [mm]	D1 min. [mm]	D1 max. [mm]	d2 [mm]	H [mm]	H1 [mm]	H2 [mm]	H3 [mm]	L [mm]	L1 [mm]	L2 [mm]	Q1 [mm]
63	EA-31	19	120.0	125.0	104	400	77	134	188	45	122	180	40
75	EA-31	19	139.7	145.0	115	413	83	140	188	46	122	180	54
90	EA-31	19	150.0	160.0	131	428	89	146	188	49	122	180	67
110	EA-31	19	175.0	190.5	161	460	104	167	188	56	122	180	88
140	EA-31	23	210.0	215.9	187	487	117	181	188	64	122	180	113
160	EA-31	24	241.3	241.3	215	508	130	189	188	72	122	180	139
225	EA-42	23	290.0	295.0	267	575	158	210	208	73	122	180	178
280	EA-42	25	353.0	362.0	329	677	205	264	208	113	122	180	210
315	EA-42	25	400.0	432.0	379	721	228	285	208	113	122	180	256



d [mm]	Q2 [mm]
63	
75	35
90	50
110	74
140	97
160	123
225	169
280	207
315	253

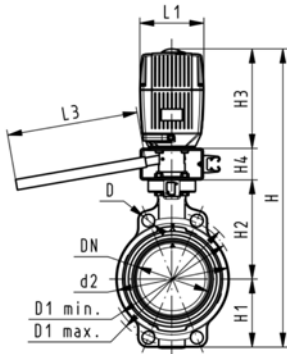


Butterfly valve type 140 PVC-U 24V With manual override

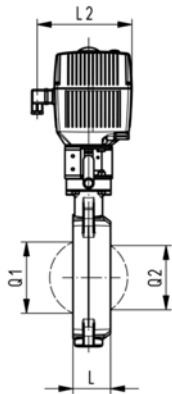
Model:

- Connecting dimension: ISO 7005 PN 10, EN 1092 PN 10, DIN 2501 PN 10, ANSI/ASME B 16.5 Class 150, BS 1560: 1989, BS 4504, JIS B 2220
- Overall length according to EN 558, ISO 5752
- Voltage 24 V AC/DC
- Control time 15 s/90°<) EA31
- Control time 25s/90°<) EA42
- Control range 90°<)
- Actuator with integrated emergency manual override standard

d [mm]	DN [mm]	Inch	PN	kv-value ($\Delta p=1$ bar) [l/min]	EPDM Code	FPM Code
63	50	2	10	1470	199 140 082	199 140 102
75	65	2 1/2	10	2200	199 140 083	199 140 103
90	80	3	10	3000	199 140 084	199 140 104
110	100	4	10	6500	199 140 085	199 140 105
140	125	5	10	11500	199 140 086	199 140 106
160	150	6	10	16600	199 140 087	199 140 107
225	200	8	10	39600	199 140 088	199 140 108



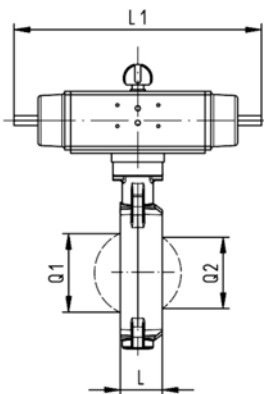
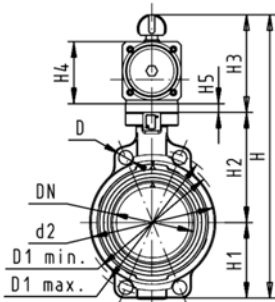
d [mm]	Actuator unit type	D [mm]	D1 min. [mm]	D1 max. [mm]	d2 [mm]	H [mm]	H1 [mm]	H2 [mm]	H3 [mm]	H4 [mm]	L [mm]	L1 [mm]	L2 [mm]
63	EA-31	19	120.0	125.0	104	460	77	134	188	60	45	122	180
75	EA-31	19	139.7	145.0	115	473	83	140	188	60	46	122	180
90	EA-31	19	150.0	160.0	131	488	89	146	188	60	49	122	180
110	EA-31	19	175.0	190.5	161	520	104	167	188	60	56	122	180
140	EA-31	23	210.0	215.9	187	547	117	181	188	60	64	122	180
160	EA-31	24	241.3	241.3	215	568	130	189	188	60	72	122	180
225	EA-42	23	290.0	295.0	267	635	158	210	208	60	73	122	180



d [mm]	L3 [mm]	Q1 [mm]	Q2 [mm]
63	250	40	
75	250	54	35
90	250	67	50
110	250	88	74
140	250	113	97
160	250	139	123
225	250	178	169

Butterfly valves pneumatic PVC-U

Butterfly valve type 240 PVC-U FC (Fail safe to close) Without manual override



Model:

- Connecting dimension: ISO 7005 PN 10, EN 1092 PN 10, DIN 2501 PN 10, ANSI/ASME B 16.5 Class 150, BS 1560: 1989, BS 4504, JIS B 2220
- Overall length according to EN 558, ISO 5752
- Control range 90°<

d [mm]	DN [mm]	Inch	PN	kv-value (Δp=1 bar) [l/min]	EPDM Code	FPM Code
63	50	2	10	1470	199 240 002	199 240 022
75	65	2 ½	10	2200	199 240 003	199 240 023
90	80	3	10	3000	199 240 004	199 240 024
110	100	4	10	6500	199 240 005	199 240 025
140	125	5	10	11500	199 240 006	199 240 026
160	150	6	10	16600	199 240 007	199 240 027
225	200	8	10	39600	199 240 008	199 240 028
280	250	10	10	55200	199 240 009	199 240 029
315	300	12	10	80000	199 240 010	199 240 030

d [mm]	Actuator unit type	D [mm]	D1 min. [mm]	D1 max. [mm]	d2 [mm]	H [mm]	H1 [mm]	H2 [mm]	H3 [mm]	H4 [mm]	H5 [mm]	L [mm]	L1 [mm]
63	PA-30 FC	19	120.0	125.0	104	327	77	134	117	70	15	45	276
75	PA-30 FC	19	139.7	145.0	115	340	83	140	117	70	15	46	276
90	PA-35 FC	19	150.0	160.0	131	361	89	146	126	78	15	49	326
110	PA-40 FC	19	175.0	190.5	161	400	104	167	129	86		56	370
140	PA-45 FC	23	210.0	215.9	187	436	117	181	139	96		64	411
160	PA-50 FC	24	241.3	241.3	215	468	130	189	149	106		72	423
225	PA-55 FC	23	290.0	295.0	267	529	158	210	161	118		73	452
280	PA-65 FC	25	353.0	362.0	329	808	205	264	191	148		113	648
315	PA-70 FC	25	400.0	432.0	379	866	228	285	196	157		113	663

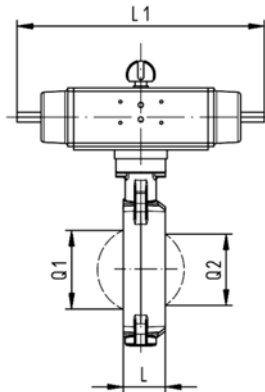
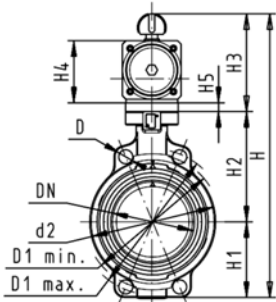
d [mm]	L2 [mm]	Q1 [mm]	Q2 [mm]
63	65	40	
75	65	54	35
90	72	67	50
110	80	88	74
140	90	113	97
160	100	139	123
225	112	178	169
280	137	210	207
315	145	256	253



Butterfly valve type 240 PVC-U FO (Fail safe to open) Without manual override

Model:

- Connecting dimension: ISO 7005 PN 10, EN 1092 PN 10, DIN 2501 PN 10, ANSI/ASME B 16.5 Class 150, BS 1560: 1989, BS 4504, JIS B 2220
- Overall length according to EN 558, ISO 5752
- Control range 90°<



d [mm]	DN [mm]	Inch	PN	kv-value ($\Delta p=1$ bar) [l/min]	EPDM Code	FPM Code
63	50	2	10	1470	199 240 042	199 240 062
75	65	2 ½	10	2200	199 240 043	199 240 063
90	80	3	10	3000	199 240 044	199 240 064
110	100	4	10	6500	199 240 045	199 240 065
140	125	5	10	11500	199 240 046	199 240 066
160	150	6	10	16600	199 240 047	199 240 067
225	200	8	10	39600	199 240 048	199 240 068
280	250	10	10	55200	199 240 049	199 240 069
315	300	12	10	80000	199 240 050	199 240 070

d [mm]	Actuator unit type	D [mm]	D1 min. [mm]	D1 max. [mm]	d2 [mm]	H [mm]	H1 [mm]	H2 [mm]	H3 [mm]	H4 [mm]	H5 [mm]	L [mm]	L1 [mm]
63	PA-30 FO	19	120.0	125.0	104	327	77	134	117	70	15	45	276
75	PA-30 FO	19	139.7	145.0	115	340	83	140	117	70	15	46	276
90	PA-35 FO	19	150.0	160.0	131	361	89	146	126	78	15	49	326
110	PA-40 FO	19	175.0	190.5	161	400	104	167	129	86		56	370
140	PA-45 FO	23	210.0	215.9	187	436	117	181	139	96		64	411
160	PA-50 FO	24	241.3	241.3	215	468	130	189	149	106		72	423
225	PA-55 FO	23	290.0	295.0	267	529	158	210	161	118		73	452
280	PA-65 FO	25	353.0	362.0	329	808	205	264	191	148		113	648
315	PA-70 FO	25	400.0	432.0	379	866	228	285	196	157		113	663

d [mm]	L2 [mm]	Q1 [mm]	Q2 [mm]
63	65	40	
75	65	54	35
90	72	67	50
110	80	88	74
140	90	113	97
160	100	139	123
225	112	178	169
280	137	210	207
315	145	256	253

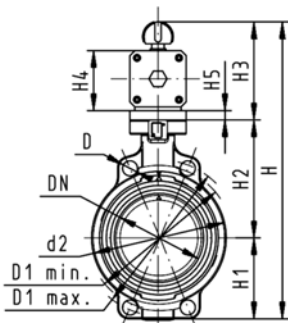


Butterfly valve type 240 PVC-U DA (Double acting) Without manual override

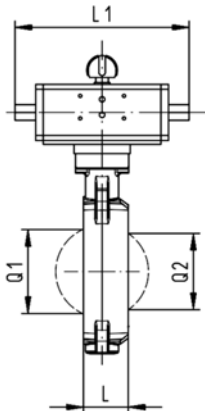
Model:

- Connecting dimension: ISO 7005 PN 10, EN 1092 PN 10, DIN 2501 PN 10, ANSI/ASME B 16.5 Class 150, BS 1560: 1989, BS 4504, JIS B 2220
- Overall length according to EN 558, ISO 5752
- Control range 90°<

d [mm]	DN [mm]	Inch	PN	kv-value ($\Delta p=1$ bar) [l/min]	EPDM Code	FPM Code
63	50	2	10	1470	199 240 082	199 240 102
75	65	2 ½	10	2200	199 240 083	199 240 103
90	80	3	10	3000	199 240 084	199 240 104
110	100	4	10	6500	199 240 085	199 240 105
140	125	5	10	11500	199 240 086	199 240 106
160	150	6	10	16600	199 240 087	199 240 107
225	200	8	10	39600	199 240 088	199 240 108
280	250	10	10	55200	199 240 089	199 240 109
315	300	12	10	80000	199 240 090	199 240 110



d [mm]	Actuator unit type	D [mm]	D1 min. [mm]	D1 max. [mm]	d2 [mm]	H [mm]	H1 [mm]	H2 [mm]	H3 [mm]	H4 [mm]	H5 [mm]	L [mm]	L1 [mm]
63	PA-35 DA	19	120.0	125.0	104	317	77	134	107	60	15	45	177
75	PA-35 DA	19	139.7	145.0	115	330	83	140	107	60	15	46	177
90	PA-40 DA	19	150.0	160.0	131	348	89	146	113	66	15	49	190
110	PA-45 DA	19	175.0	190.5	161	372	104	167	102	71		56	235
140	PA-45 DA	23	210.0	215.9	187	408	117	181	111	78		64	235
160	PA-55 DA	24	241.3	241.3	215	448	130	189	129	86		72	279
225	PA-55 DA	23	290.0	295.0	267	507	158	210	139	96		73	279
280	PA-65 DA	25	353.0	362.0	329	748	205	264	161	118		113	350
315	PA-70 DA	25	400.0	432.0	379	816	228	285	173	130		113	381



d [mm]	L2 [mm]	Q1 [mm]	Q2 [mm]
63	55	40	
75	55	54	35
90	60	67	50
110	65	88	74
140	72	113	97
160	80	139	123
225	90	178	169
280	112	210	207
315	125	256	253

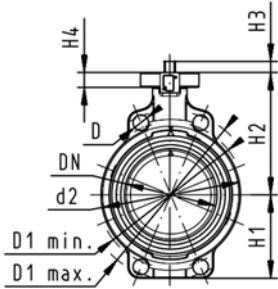
Butterfly valves PVC-C

Butterfly valve type 567 PVC-C Bare shaft

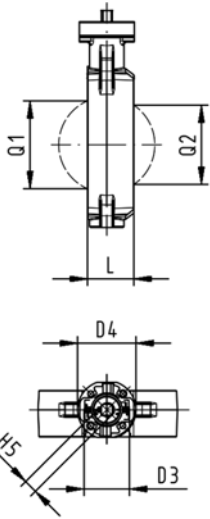


Model:

- Connecting dimension: ISO 7005 PN 10, EN 1092 PN 10, DIN 2501 PN 10, ANSI/ASME B 16.5 Class 150, BS 1560: 1989, BS 4504, JIS B 2220
- Overall length according to EN 558, ISO 5752
- Interface F07 according to DIN/ISO 5211



d [mm]	DN [mm]	Inch	PN	kv-value (Δp=1 bar) [l/min]	EPDM Code	FPM Code
63	50	2	10	1470	163 567 802	163 567 822
75	65	2 ½	10	2200	163 567 803	163 567 823
90	80	3	10	3000	163 567 804	163 567 824
110	100	4	10	6500	163 567 805	163 567 825
140	125	5	10	11500	163 567 806	163 567 826
160	150	6	10	16600	163 567 807	163 567 827
225	200	8	10	39600	163 567 808	163 567 828



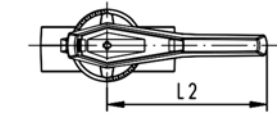
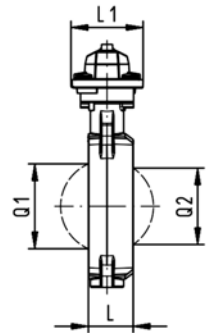
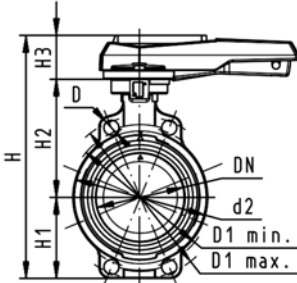
d [mm]	D [mm]	D1 min. [mm]	D1 max. [mm]	d2 [mm]	D3 [mm]	D4 [mm]	H [mm]	H1 [mm]	H2 [mm]	H3 [mm]	H4 [mm]	H5 [mm]	L [mm]	Q1 [mm]	Q2 [mm]
63	19	120.0	125.0	104	70	90	222	77	134	27	23	11	45	40	
75	19	139.7	145.0	115	70	90	235	83	140	27	23	11	46	54	35
90	19	150.0	160.0	131	70	90	247	89	146	27	23	11	49	67	50
110	19	175.0	190.5	161	70	90	287	104	167	16	23	14	56	88	74
140	23	210.0	215.9	187	70	90	313	117	181	16	23	14	64	113	97
160	24	241.3	241.3	215	70	90	335	130	189	19	23	17	72	139	123
225	23	290.0	295.0	267	70	90	387	158	210	19	23	17	73	178	169



Butterfly valve type 567 PVC-C Hand lever with ratchet settings

Model:

- Connecting dimension: ISO 7005 PN 10, EN 1092 PN 10, DIN 2501 PN 10, ANSI/ASME B 16.5 Class 150, BS 1560: 1989, BS 4504, JIS B 2220
- Overall length according to EN 558, ISO 5752



d [mm]	DN [mm]	Inch	PN	kv-value ($\Delta p=1$ bar) [l/min]	EPDM Code	FPM Code
63	50	2	10	1470	163 567 002	163 567 022
75	65	2 ½	10	2200	163 567 003	163 567 023
90	80	3	10	3000	163 567 004	163 567 024
110	100	4	10	6500	163 567 005	163 567 025
140	125	5	10	11500	163 567 006	163 567 026
160	150	6	10	16600	163 567 007	163 567 027
225	200	8	10	39600	163 567 008	163 567 028

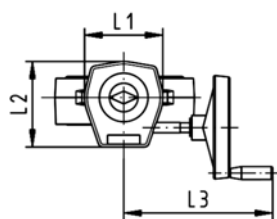
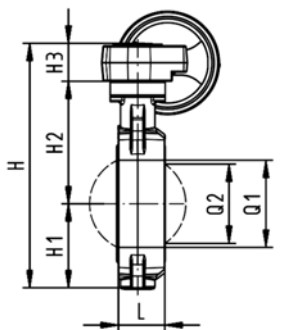
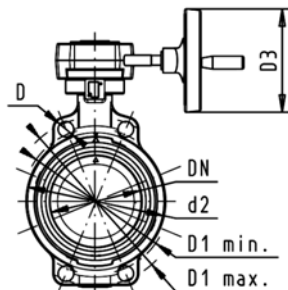
d [mm]	D [mm]	D1 min. [mm]	D1 max. [mm]	d2 [mm]	H [mm]	H1 [mm]	H2 [mm]	H3 [mm]	L [mm]	L1 [mm]	L2 [mm]	Q1 [mm]	Q2 [mm]
63	19	120.0	125.0	104	264	77	134	54	45	106	205	40	
75	19	139.7	145.0	115	277	83	140	54	46	106	205	54	35
90	19	150.0	160.0	131	289	89	146	54	49	106	205	67	50
110	19	175.0	190.5	161	325	104	167	55	56	106	255	88	74
140	23	210.0	215.9	187	352	117	181	55	64	106	255	113	97
160	24	241.3	241.3	215	373	130	189	55	72	106	255	139	123
225	23	290.0	295.0	267	435	158	210	67	73	140	408	178	169



Butterfly valve type 567 PVC-C Reduction gear with handwheel

Model:

- Connecting dimension: ISO 7005 PN 10, EN 1092 PN 10, DIN 2501 PN 10, ANSI/ASME B 16.5 Class 150, BS 1560: 1989, BS 4504, JIS B 2220
- Overall length according to EN 558, ISO 5752



d [mm]	DN [mm]	Inch	PN	kv-value ($\Delta p=1$ bar) [l/min]	EPDM Code	FPM Code
63	50	2	10	1470	163 567 042	163 567 062
75	65	2 ½	10	2200	163 567 043	163 567 063
90	80	3	10	3000	163 567 044	163 567 064
110	100	4	10	6500	163 567 045	163 567 065
140	125	5	10	11500	163 567 046	163 567 066
160	150	6	10	16600	163 567 047	163 567 067
225	200	8	10	39600	163 567 048	163 567 068

d [mm]	D [mm]	D1 min. [mm]	D1 max. [mm]	d2 [mm]	D3 [mm]	H [mm]	H1 [mm]	H2 [mm]	H3 [mm]	L [mm]	L1 [mm]	L2 [mm]	L3 [mm]	Q1 [mm]
63	19	120.0	125.0	104	160	278	77	134	60	45	120	132	236	40
75	19	139.7	145.0	115	160	291	83	140	60	46	120	132	236	54
90	19	150.0	160.0	131	160	303	89	146	60	49	120	132	236	67
110	19	175.0	190.5	160	160	339	104	167	60	56	120	132	236	88
140	23	210.0	215.9	187	160	365	117	181	60	64	120	132	236	113
160	24	241.3	241.3	215	160	387	130	189	60	72	120	132	236	139
225	23	290.0	295.0	267	160	436	158	210	60	73	120	132	236	178

d [mm]	Q2 [mm]
63	
75	35
90	50
110	74
140	97
160	123
225	169

Butterfly valves electric PVC-C

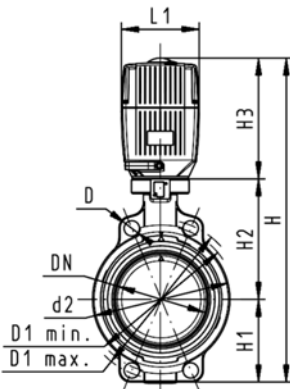
Butterfly valve type 140 PVC-C 100-230V Without manual override



Model:

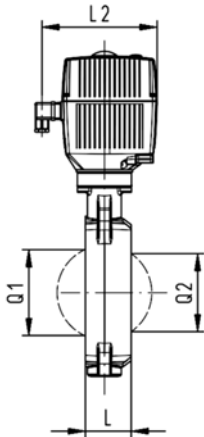
- Connecting dimension: ISO 7005 PN 10, EN 1092 PN 10, DIN 2501 PN 10, ANSI/ASME B 16.5 Class 150, BS 1560: 1989, BS 4504, JIS B 2220
- Overall length according to EN 558, ISO 5752
- Voltage 100-230 V, 50-60 Hz
- Control time 15 s/90°<) EA31
- Control time 25s/90°<) EA42
- Control range 90°<)
- Actuator with integrated emergency manual override standard

d [mm]	DN [mm]	Inch	PN	kv-value (Δp=1 bar) [l/min]	EPDM Code	FPM Code
63	50	2	10	1470	199 140 202	199 140 222
75	65	2 ½	10	2200	199 140 203	199 140 223
90	80	3	10	3000	199 140 204	199 140 224
110	100	4	10	6500	199 140 205	199 140 225
140	125	5	10	11500	199 140 206	199 140 226
160	150	6	10	16600	199 140 207	199 140 227
225	200	8	10	39600	199 140 208	199 140 228



d [mm]	Actuator unit type	D [mm]	D1 min. [mm]	D1 max. [mm]	d2 [mm]	H [mm]	H1 [mm]	H2 [mm]	H3 [mm]	L [mm]	L1 [mm]	L2 [mm]	Q1 [mm]
63	EA-31	19	120.0	125.0	104	400	77	134	188	45	122	180	40
75	EA-31	19	139.7	145.0	115	413	83	140	188	46	122	180	54
90	EA-31	19	150.0	160.0	131	428	89	146	188	49	122	180	67
110	EA-31	19	175.0	190.5	161	460	104	167	188	56	122	180	88
140	EA-31	23	210.0	215.9	187	487	117	181	188	64	122	180	113
160	EA-31	24	241.3	241.3	215	508	130	189	188	72	122	180	139
225	EA-42	23	290.0	295.0	267	575	158	210	208	73	122	180	178

d [mm]	Q2 [mm]
63	
75	35
90	50
110	74
140	97
160	123
225	169



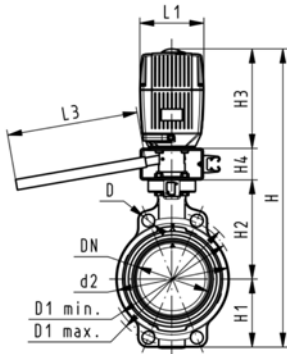


Butterfly valve type 140 PVC-C 100-230V With manual override

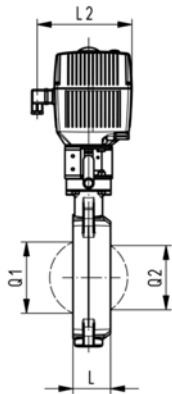
Model:

- Connecting dimension: ISO 7005 PN 10, EN 1092 PN 10, DIN 2501 PN 10, ANSI/ASME B 16.5 Class 150, BS 1560: 1989, BS 4504, JIS B 2220
- Overall length according to EN 558, ISO 5752
- Voltage 100-230 V, 50-60 Hz
- Control time 15 s/90°<) EA31
- Control time 25s/90°<) EA42
- Control range 90°<)
- Actuator with integrated emergency manual override standard

d [mm]	DN [mm]	Inch	PN	kv-value ($\Delta p=1$ bar) [l/min]	EPDM Code	FPM Code
63	50	2	10	1470	199 140 162	199 140 182
75	65	2 1/2	10	2200	199 140 163	199 140 183
90	80	3	10	3000	199 140 164	199 140 184
110	100	4	10	6500	199 140 165	199 140 185
140	125	5	10	11500	199 140 166	199 140 186
160	150	6	10	16600	199 140 167	199 140 187
225	200	8	10	39600	199 140 168	199 140 188



d [mm]	Actuator unit type	D [mm]	D1 min. [mm]	D1 max. [mm]	d2 [mm]	H [mm]	H1 [mm]	H2 [mm]	H3 [mm]	H4 [mm]	L [mm]	L1 [mm]	L2 [mm]
63	EA-31	19	120.0	125.0	104	460	77	134	188	60	45	122	180
75	EA-31	19	139.7	145.0	115	473	83	140	188	60	46	122	180
90	EA-31	19	150.0	160.0	131	488	89	146	188	60	49	122	180
110	EA-31	19	175.0	190.5	161	520	104	167	188	60	56	122	180
140	EA-31	23	210.0	215.9	187	547	117	181	188	60	64	122	180
160	EA-31	24	241.3	241.3	215	568	130	189	188	60	72	122	180
225	EA-42	23	290.0	295.0	267	635	158	210	208	60	73	122	180



d [mm]	L3 [mm]	Q1 [mm]	Q2 [mm]
63	250	40	
75	250	54	35
90	250	67	50
110	250	88	74
140	250	113	97
160	250	139	123
225	250	178	169

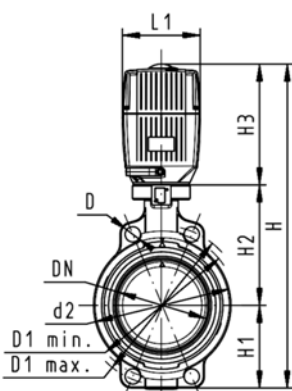


Butterfly valve type 140 PVC-C 24V Without manual override

Model:

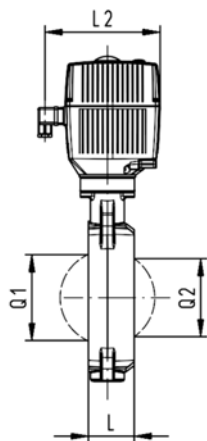
- Connecting dimension: ISO 7005 PN 10, EN 1092 PN 10, DIN 2501 PN 10, ANSI/ASME B 16.5 Class 150, BS 1560: 1989, BS 4504, JIS B 2220
- Overall length according to EN 558, ISO 5752
- Voltage 24 V AC/DC
- Control time 15 s/90°<) EA31
- Control time 25s/90°<) EA42
- Control range 90°<)
- Actuator with integrated emergency manual override standard

d [mm]	DN [mm]	Inch	PN	kv-value ($\Delta p=1$ bar) [l/min]	EPDM Code	FPM Code
63	50	2	10	1470	199 140 282	199 140 302
75	65	2 ½	10	2200	199 140 283	199 140 303
90	80	3	10	3000	199 140 284	199 140 304
110	100	4	10	6500	199 140 285	199 140 305
140	125	5	10	11500	199 140 286	199 140 306
160	150	6	10	16600	199 140 287	199 140 307
225	200	8	10	39600	199 140 288	199 140 308



d [mm]	Actuator unit type	D [mm]	D1 min. [mm]	D1 max. [mm]	d2 [mm]	H [mm]	H1 [mm]	H2 [mm]	H3 [mm]	L [mm]	L1 [mm]	L2 [mm]	Q1 [mm]
63	EA-31	19	120.0	125.0	104	400	77	134	188	45	122	180	40
75	EA-31	19	139.7	145.0	115	413	83	140	188	46	122	180	54
90	EA-31	19	150.0	160.0	131	428	89	146	188	49	122	180	67
110	EA-31	19	175.0	190.5	161	460	104	167	188	56	122	180	88
140	EA-31	23	210.0	215.9	187	487	117	181	188	64	122	180	113
160	EA-31	24	241.3	241.3	215	508	130	189	188	72	122	180	139
225	EA-42	23	290.0	295.0	267	575	158	210	208	73	122	180	178

d [mm]	Q2 [mm]
63	
75	35
90	50
110	74
140	97
160	123
225	169



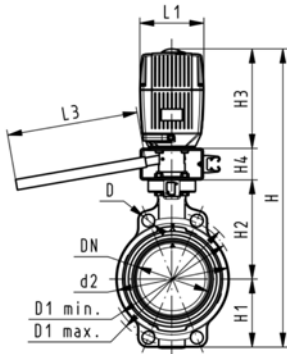


Butterfly valve type 140 PVC-C 24V With manual override

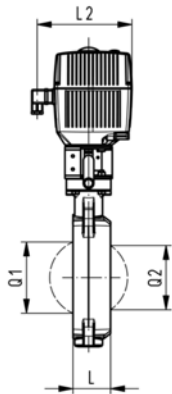
Model:

- Connecting dimension: ISO 7005 PN 10, EN 1092 PN 10, DIN 2501 PN 10, ANSI/ASME B 16.5 Class 150, BS 1560: 1989, BS 4504, JIS B 2220
- Overall length according to EN 558, ISO 5752
- Voltage 24 V AC/DC
- Control time 15 s/90°<) EA31
- Control time 25s/90°<) EA42
- Control range 90°<)
- Actuator with integrated emergency manual override standard

d [mm]	DN [mm]	Inch	PN	kv-value ($\Delta p=1$ bar) [l/min]	EPDM Code	FPM Code
63	50	2	10	1470	199 140 242	199 140 262
75	65	2 1/2	10	2200	199 140 243	199 140 263
90	80	3	10	3000	199 140 244	199 140 264
110	100	4	10	6500	199 140 245	199 140 265
140	125	5	10	11500	199 140 246	199 140 266
160	150	6	10	16600	199 140 247	199 140 267
225	200	8	10	39600	199 140 248	199 140 268



d [mm]	Actuator unit type	D [mm]	D1 min. [mm]	D1 max. [mm]	d2 [mm]	H [mm]	H1 [mm]	H2 [mm]	H3 [mm]	H4 [mm]	L [mm]	L1 [mm]	L2 [mm]
63	EA-31	19	120.0	125.0	104	460	77	134	188	60	45	122	180
75	EA-31	19	139.7	145.0	115	473	83	140	188	60	46	122	180
90	EA-31	19	150.0	160.0	131	488	89	146	188	60	49	122	180
110	EA-31	19	175.0	190.5	161	520	104	167	188	60	56	122	180
140	EA-31	23	210.0	215.9	187	547	117	181	188	60	64	122	180
160	EA-31	24	241.3	241.3	215	568	130	189	188	60	72	122	180
225	EA-42	23	290.0	295.0	267	635	158	210	208	60	73	122	180



d [mm]	L3 [mm]	Q1 [mm]	Q2 [mm]
63	250	40	
75	250	54	35
90	250	67	50
110	250	88	74
140	250	113	97
160	250	139	123
225	250	178	169

Butterfly valves pneumatic PVC-C

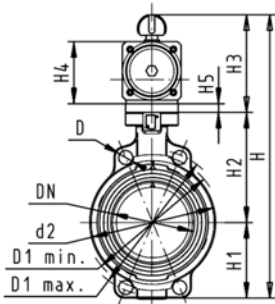
Butterfly valve type 240 PVC-C FC (Fail safe to close) Without manual override



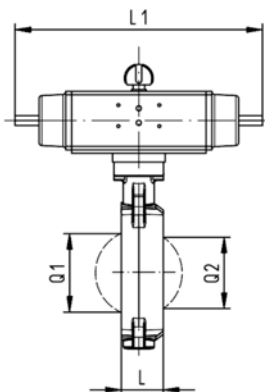
Model:

- Connecting dimension: ISO 7005 PN 10, EN 1092 PN 10, DIN 2501 PN 10, ANSI/ASME B 16.5 Class 150, BS 1560: 1989, BS 4504, JIS B 2220
- Overall length according to EN 558, ISO 5752
- Control range 90°<

d [mm]	DN [mm]	Inch	PN	kv-value ($\Delta p=1$ bar) [l/min]	EPDM Code	FPM Code
63	50	2	10	1470	199 240 162	199 240 182
75	65	2 ½	10	2200	199 240 163	199 240 183
90	80	3	10	3000	199 240 164	199 240 184
110	100	4	10	6500	199 240 165	199 240 185
140	125	5	10	11500	199 240 166	199 240 186
160	150	6	10	16600	199 240 167	199 240 187
225	200	8	10	39600	199 240 168	199 240 188



d [mm]	Actuator unit type	D [mm]	D1 min. [mm]	D1 max. [mm]	d2 [mm]	H [mm]	H1 [mm]	H2 [mm]	H3 [mm]	H4 [mm]	H5 [mm]	L [mm]	L1 [mm]
63	PA-30 FC	19	120.0	125.0	104	327	77	134	117	70	15	45	276
75	PA-30 FC	19	139.7	145.0	115	340	83	140	117	70	15	46	276
90	PA-35 FC	19	150.0	160.0	131	361	89	146	126	78	15	49	326
110	PA-40 FC	19	175.0	190.5	161	400	104	167	129	86		56	370
140	PA-45 FC	23	210.0	215.9	187	436	117	181	139	96		64	411
160	PA-50 FC	24	241.3	241.3	215	468	130	189	149	106		72	423
225	PA-55 FC	23	290.0	295.0	267	529	158	210	161	118		73	452



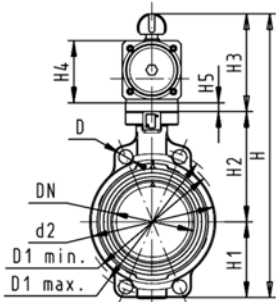
d [mm]	L2 [mm]	Q1 [mm]	Q2 [mm]
63	65	40	
75	65	54	35
90	72	67	50
110	80	88	74
140	90	113	97
160	100	139	123
225	112	178	169



Butterfly valve type 240 PVC-C FO (Fail safe to open) Without manual override

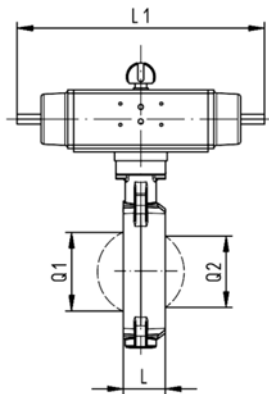
Model:

- Connecting dimension: ISO 7005 PN 10, EN 1092 PN 10, DIN 2501 PN 10, ANSI/ASME B 16.5 Class 150, BS 1560: 1989, BS 4504, JIS B 2220
- Overall length according to EN 558, ISO 5752
- Control range 90°<



d [mm]	DN [mm]	Inch	PN	kv-value (Δp=1 bar) [l/min]	EPDM Code	FPM Code
63	50	2	10	1470	199 240 202	199 240 222
75	65	2 ½	10	2200	199 240 203	199 240 223
90	80	3	10	3000	199 240 204	199 240 224
110	100	4	10	6500	199 240 205	199 240 225
140	125	5	10	11500	199 240 206	199 240 226
160	150	6	10	16600	199 240 207	199 240 227
225	200	8	10	39600	199 240 208	199 240 228

d [mm]	Actuator unit type	D [mm]	D1 min. [mm]	D1 max. [mm]	d2 [mm]	H [mm]	H1 [mm]	H2 [mm]	H3 [mm]	H4 [mm]	H5 [mm]	L [mm]	L1 [mm]
63	PA-30 FO	19	120.0	125.0	104	327	77	134	117	70	15	45	276
75	PA-30 FO	19	139.7	145.0	115	340	83	140	117	70	15	46	276
90	PA-35 FO	19	150.0	160.0	131	361	89	146	126	78	15	49	326
110	PA-40 FO	19	175.0	190.5	161	400	104	167	129	86		56	370
140	PA-45 FO	23	210.0	215.9	187	436	117	181	139	96		64	411
160	PA-50 FO	24	241.3	241.3	215	468	130	189	149	106		72	423
225	PA-55 FO	23	290.0	295.0	267	529	158	210	161	118		73	452



d [mm]	L2 [mm]	Q1 [mm]	Q2 [mm]
63	65	40	
75	65	54	35
90	72	67	50
110	80	88	74
140	90	113	97
160	100	139	123
225	112	178	169

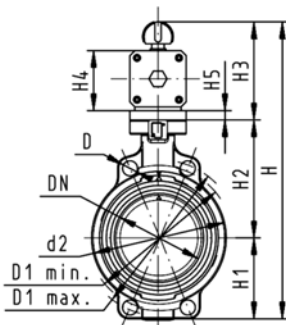


Butterfly valve type 240 PVC-C DA (Double acting) Without manual override

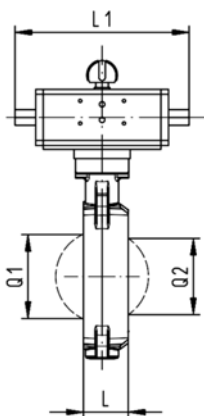
Model:

- Connecting dimension: ISO 7005 PN 10, EN 1092 PN 10, DIN 2501 PN 10, ANSI/ASME B 16.5 Class 150, BS 1560: 1989, BS 4504, JIS B 2220
- Overall length according to EN 558, ISO 5752
- Control range 90°<

d [mm]	DN [mm]	Inch	PN	kv-value (Δp=1 bar) [l/min]	EPDM Code	FPM Code
63	50	2	10	1470	199 240 242	199 240 262
75	65	2 ½	10	2200	199 240 243	199 240 263
90	80	3	10	3000	199 240 244	199 240 264
110	100	4	10	6500	199 240 245	199 240 265
140	125	5	10	11500	199 240 246	199 240 266
160	150	6	10	16600	199 240 247	199 240 267
225	200	8	10	39600	199 240 248	199 240 268



d [mm]	Actuator unit type	D [mm]	D1 min. [mm]	D1 max. [mm]	d2 [mm]	H [mm]	H1 [mm]	H2 [mm]	H3 [mm]	H4 [mm]	H5 [mm]	L [mm]	L1 [mm]
63	PA-35 DA	19	120.0	125.0	104	317	77	134	107	60	15	45	177
75	PA-35 DA	19	139.7	145.0	115	330	83	140	107	60	15	46	177
90	PA-40 DA	19	150.0	160.0	131	348	89	146	113	66	15	49	190
110	PA-45 DA	19	175.0	190.5	161	372	104	167	102	71		56	235
140	PA-45 DA	23	210.0	215.9	187	408	117	181	111	78		64	235
160	PA-55 DA	24	241.3	241.3	215	448	130	189	129	86		72	279
225	PA-55 DA	23	290.0	295.0	267	507	158	210	139	96		73	279



d [mm]	L2 [mm]	Q1 [mm]	Q2 [mm]
63	55	40	
75	55	54	35
90	60	67	50
110	65	88	74
140	72	113	97
160	80	139	123
225	90	178	169

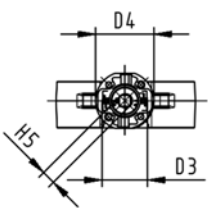
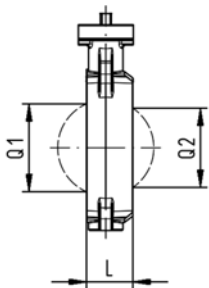
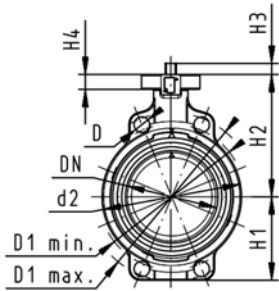
Butterfly valves ABS

Butterfly valve type 567 ABS Bare shaft



Model:

- Connecting dimension: ISO 7005 PN 10, EN 1092 PN 10, DIN 2501 PN 10, ANSI/ASME B 16.5 Class 150, BS 1560: 1989, BS 4504, JIS B 2220
- Overall length according to EN 558, ISO 5752
- Interface F07 according to DIN/ISO 5211



d [mm]	DN [mm]	PN	kv-value ($\Delta p=1$ bar) [l/min]	EPDM Code
63	50	10	1470	169 567 802
75	65	10	2200	169 567 803
90	80	10	3000	169 567 804
110	100	10	6500	169 567 805
140	125	10	11500	169 567 806
160	150	10	16600	169 567 807
225	200	10	39600	169 567 808

d [mm]	D [mm]	D1 min. [mm]	D1 max. [mm]	d2 [mm]	D3 [mm]	D4 [mm]	H [mm]	H1 [mm]	H2 [mm]	H3 [mm]	H4 [mm]	H5 [mm]	L [mm]	Q1 [mm]	Q2 [mm]
63	19	120.0	125.0	104	70	90	222	77	134	27	23	11	45	40	
75	19	139.7	145.0	115	70	90	235	83	140	27	23	11	46	54	35
90	19	150.0	160.0	131	70	90	247	89	146	27	23	11	49	67	50
110	19	175.0	190.5	161	70	90	287	104	167	16	23	14	56	88	74
140	23	210.0	215.9	187	70	90	313	117	181	16	23	14	64	113	97
160	24	241.3	241.3	215	70	90	335	130	189	19	23	17	72	139	123
225	23	290.0	295.0	267	70	90	387	158	210	19	23	17	73	178	169

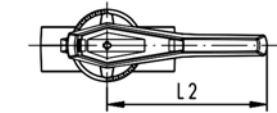
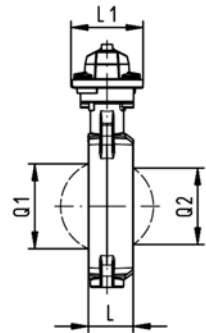
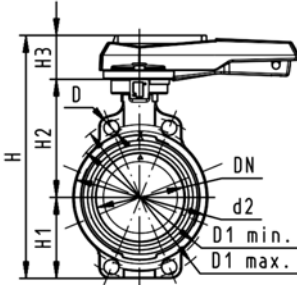
d [mm]	closest inch
63	2
75	2 ½
90	3
110	4
140	5
160	6
225	8



Butterfly valve type 567 ABS Hand lever with ratchet settings

Model:

- Connecting dimension: ISO 7005 PN 10, EN 1092 PN 10, DIN 2501 PN 10, ANSI/ASME B 16.5 Class 150, BS 1560: 1989, BS 4504, JIS B 2220
- Overall length according to EN 558, ISO 5752



d [mm]	DN [mm]	PN	kv-value ($\Delta p=1$ bar) [l/min]	EPDM Code
63	50	10	1470	169 567 002
75	65	10	2200	169 567 003
90	80	10	3000	169 567 004
110	100	10	6500	169 567 005
140	125	10	11500	169 567 006
160	150	10	16600	169 567 007
225	200	10	39600	169 567 008

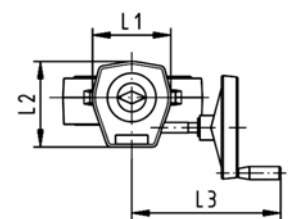
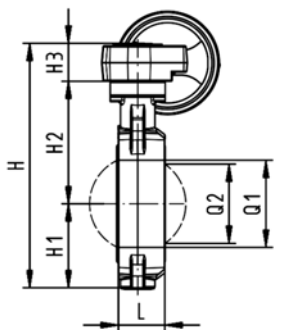
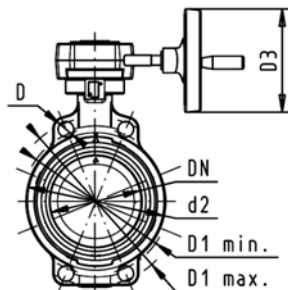
d [mm]	D [mm]	D1 min. [mm]	D1 max. [mm]	d2 [mm]	H [mm]	H1 [mm]	H2 [mm]	H3 [mm]	L [mm]	L1 [mm]	L2 [mm]	Q1 [mm]	Q2 [mm]	closest inch
63	19	120.0	125.0	104	264	77	134	54	45	106	205	40		2
75	19	139.7	145.0	115	277	83	140	54	46	106	205	54	35	2 ½
90	19	150.0	160.0	131	289	89	146	54	49	106	205	67	50	3
110	19	175.0	190.5	161	325	104	167	55	56	106	255	88	74	4
140	23	210.0	215.9	187	352	117	181	55	64	106	255	113	97	5
160	24	241.3	241.3	215	373	130	189	55	72	106	255	139	123	6
225	23	290.0	295.0	267	435	158	210	67	73	140	408	178	169	8



Butterfly valve type 567 ABS Reduction gear with handwheel

Model:

- Connecting dimension: ISO 7005 PN 10, EN 1092 PN 10, DIN 2501 PN 10, ANSI/ASME B 16.5 Class 150, BS 1560: 1989, BS 4504, JIS B 2220
- Overall length according to EN 558, ISO 5752



d [mm]	DN [mm]	PN	kv-value ($\Delta p=1$ bar) [l/min]	EPDM Code
63	50	10	1470	169 567 022
75	65	10	2200	169 567 023
90	80	10	3000	169 567 024
110	100	10	6500	169 567 025
140	125	10	11500	169 567 026
160	150	10	16600	169 567 027
225	200	10	39600	169 567 028

d [mm]	D [mm]	D1 min. [mm]	D1 max. [mm]	d2 [mm]	D3 [mm]	H [mm]	H1 [mm]	H2 [mm]	H3 [mm]	L [mm]	L1 [mm]	L2 [mm]	L3 [mm]	Q1 [mm]
63	19	120.0	125.0	104	160	278	77	134	60	45	120	132	236	40
75	19	139.7	145.0	115	160	291	83	140	60	46	120	132	236	54
90	19	150.0	160.0	131	160	303	89	146	60	49	120	132	236	67
110	19	175.0	190.5	160	160	339	104	167	60	56	120	132	236	88
140	23	210.0	215.9	187	160	365	117	181	60	64	120	132	236	113
160	24	241.3	241.3	215	160	387	130	189	60	72	120	132	236	139
225	23	290.0	295.0	267	160	436	158	210	60	73	120	132	236	178

d [mm]	Q2 [mm]	closest inch
63		2
75	35	2 1/2
90	50	3
110	74	4
140	97	5
160	123	6
225	169	8

Butterfly valves electric ABS

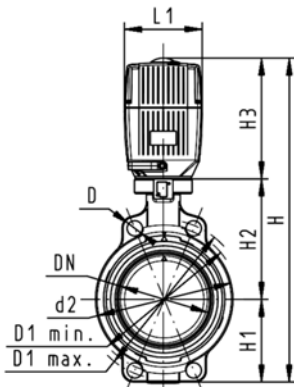
Butterfly valve type 140 ABS 100-230V Without manual override



Model:

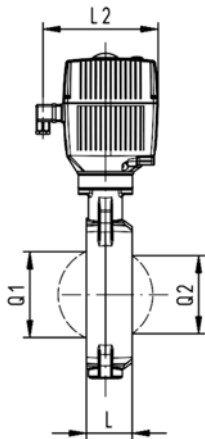
- Connecting dimension: ISO 7005 PN 10, EN 1092 PN 10, DIN 2501 PN 10, ANSI/ASME B 16.5 Class 150, BS 1560: 1989, BS 4504, JIS B 2220
- Overall length according to EN 558, ISO 5752
- Voltage 100-230 V, 50-60 Hz
- Control time 15 s/90°<) EA31
- Control time 25s/90°<) EA42
- Control range 90°<)
- Actuator with integrated emergency manual override standard

d [mm]	DN [mm]	PN	kv-value (Δp=1 bar) [l/min]	EPDM Code
63	50	10	1470	199 140 502
75	65	10	2200	199 140 503
90	80	10	3000	199 140 504
110	100	10	6500	199 140 505
140	125	10	11500	199 140 506
160	150	10	16600	199 140 507
225	200	10	39600	199 140 508



d [mm]	Actuator unit type	D [mm]	D1 min. [mm]	D1 max. [mm]	d2 [mm]	H [mm]	H1 [mm]	H2 [mm]	H3 [mm]	L [mm]	L1 [mm]	L2 [mm]	Q1 [mm]
63	EA-31	19	120.0	125.0	104	400	77	134	188	45	122	180	40
75	EA-31	19	139.7	145.0	115	413	83	140	188	46	122	180	54
90	EA-31	19	150.0	160.0	131	428	89	146	188	49	122	180	67
110	EA-31	19	175.0	190.5	161	460	104	167	188	56	122	180	88
140	EA-31	23	210.0	215.9	187	487	117	181	188	64	122	180	113
160	EA-31	24	241.3	241.3	215	508	130	189	188	72	122	180	139
225	EA-42	23	290.0	295.0	267	575	158	210	208	73	122	180	178

d [mm]	Q2 [mm]	closest inch
63		2
75	35	2 ½
90	50	3
110	74	4
140	97	5
160	123	6
225	169	8



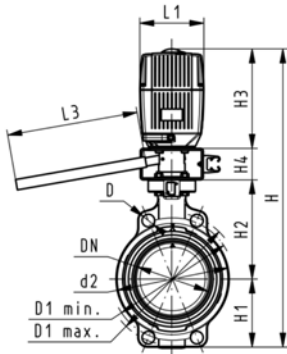


Butterfly valve type 140 ABS 100-230V With manual override

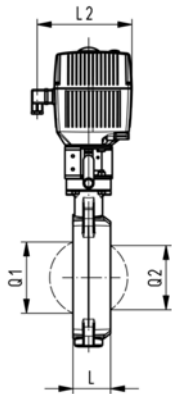
Model:

- Connecting dimension: ISO 7005 PN 10, EN 1092 PN 10, DIN 2501 PN 10, ANSI/ASME B 16.5 Class 150, BS 1560: 1989, BS 4504, JIS B 2220
- Overall length according to EN 558, ISO 5752
- Voltage 100-230 V, 50-60 Hz
- Control time 15 s/90°<) EA31
- Control time 25s/90°<) EA42
- Control range 90°<)
- Actuator with integrated emergency manual override standard

d [mm]	DN [mm]	PN	kv-value ($\Delta p=1$ bar) [l/min]	EPDM Code
63	50	10	1470	199 140 482
75	65	10	2200	199 140 483
90	80	10	3000	199 140 484
110	100	10	6500	199 140 485
140	125	10	11500	199 140 486
160	150	10	16600	199 140 487
225	200	10	39600	199 140 488



d [mm]	Actuator unit type	D [mm]	D1 min. [mm]	D1 max. [mm]	d2 [mm]	H [mm]	H1 [mm]	H2 [mm]	H3 [mm]	H4 [mm]	L [mm]	L1 [mm]	L2 [mm]
63	EA-31	19	120.0	125.0	104	460	77	134	188	60	45	122	180
75	EA-31	19	139.7	145.0	115	473	83	140	188	60	46	122	180
90	EA-31	19	150.0	160.0	131	488	89	146	188	60	49	122	180
110	EA-31	19	175.0	190.5	161	520	104	167	188	60	56	122	180
140	EA-31	23	210.0	215.9	187	547	117	181	188	60	64	122	180
160	EA-31	24	241.3	241.3	215	568	130	189	188	60	72	122	180
225	EA-42	23	290.0	295.0	267	635	158	210	208	60	73	122	180



d [mm]	L3 [mm]	Q1 [mm]	Q2 [mm]	closest inch
63	250	40		2
75	250	54	35	2 ½
90	250	67	50	3
110	250	88	74	4
140	250	113	97	5
160	250	139	123	6
225	250	178	169	8

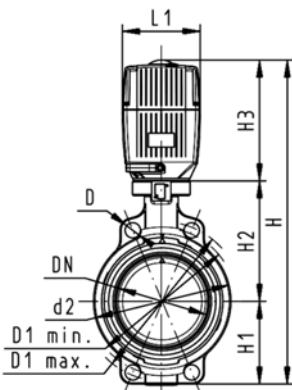


Butterfly valve type 140 ABS 24V Without manual override

Model:

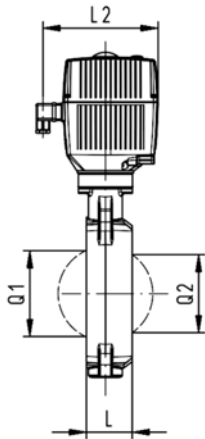
- Connecting dimension: ISO 7005 PN 10, EN 1092 PN 10, DIN 2501 PN 10, ANSI/ASME B 16.5 Class 150, BS 1560: 1989, BS 4504, JIS B 2220
- Overall length according to EN 558, ISO 5752
- Voltage 24 V AC/DC
- Control time 15 s/90°<) EA31
- Control time 25s/90°<) EA42
- Control range 90°<)
- Actuator with integrated emergency manual override standard

d [mm]	DN [mm]	PN	kv-value ($\Delta p=1$ bar) [l/min]	EPDM Code
63	50	10	1470	199 140 542
75	65	10	2200	199 140 543
90	80	10	3000	199 140 544
110	100	10	6500	199 140 545
140	125	10	11500	199 140 546
160	150	10	16600	199 140 547
225	200	10	39600	199 140 548



d [mm]	Actuator unit type	D [mm]	D1 min. [mm]	D1 max. [mm]	d2 [mm]	H [mm]	H1 [mm]	H2 [mm]	H3 [mm]	L [mm]	L1 [mm]	L2 [mm]	Q1 [mm]
63	EA-31	19	120.0	125.0	104	400	77	134	188	45	122	180	40
75	EA-31	19	139.7	145.0	115	413	83	140	188	46	122	180	54
90	EA-31	19	150.0	160.0	131	428	89	146	188	49	122	180	67
110	EA-31	19	175.0	190.5	161	460	104	167	188	56	122	180	88
140	EA-31	23	210.0	215.9	187	487	117	181	188	64	122	180	113
160	EA-31	24	241.3	241.3	215	508	130	189	188	72	122	180	139
225	EA-42	23	290.0	295.0	267	575	158	210	208	73	122	180	178

d [mm]	Q2 [mm]	closest inch
63		2
75	35	2 ½
90	50	3
110	74	4
140	97	5
160	123	6
225	169	8



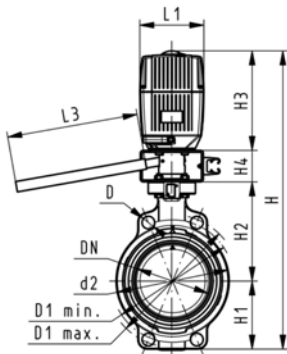


Butterfly valve type 140 ABS 24V With manual override

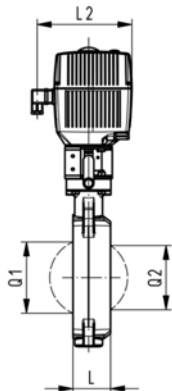
Model:

- Connecting dimension: ISO 7005 PN 10, EN 1092 PN 10, DIN 2501 PN 10, ANSI/ASME B 16.5 Class 150, BS 1560: 1989, BS 4504, JIS B 2220
- Overall length according to EN 558, ISO 5752
- Voltage 24 V AC/DC
- Control time 15 s/90°<) EA31
- Control time 25s/90°<) EA42
- Control range 90°<)
- Actuator with integrated emergency manual override standard

d [mm]	DN [mm]	PN	kv-value ($\Delta p=1$ bar) [l/min]	EPDM Code
63	50	10	1470	199 140 522
75	65	10	2200	199 140 523
90	80	10	3000	199 140 524
110	100	10	6500	199 140 525
140	125	10	11500	199 140 526
160	150	10	16600	199 140 527
225	200	10	39600	199 140 528



d [mm]	Actuator unit type	D [mm]	D1 min. [mm]	D1 max. [mm]	d2 [mm]	H [mm]	H1 [mm]	H2 [mm]	H3 [mm]	H4 [mm]	L [mm]	L1 [mm]	L2 [mm]
63	EA-31	19	120.0	125.0	104	460	77	134	188	60	45	122	180
75	EA-31	19	139.7	145.0	115	473	83	140	188	60	46	122	180
90	EA-31	19	150.0	160.0	131	488	89	146	188	60	49	122	180
110	EA-31	19	175.0	190.5	161	520	104	167	188	60	56	122	180
140	EA-31	23	210.0	215.9	187	547	117	181	188	60	64	122	180
160	EA-31	24	241.3	241.3	215	568	130	189	188	60	72	122	180
225	EA-42	23	290.0	295.0	267	635	158	210	208	60	73	122	180



d [mm]	L3 [mm]	Q1 [mm]	Q2 [mm]	closest inch
63	250	40		2
75	250	54	35	2 ½
90	250	67	50	3
110	250	88	74	4
140	250	113	97	5
160	250	139	123	6
225	250	178	169	8

Butterfly valves pneumatic ABS

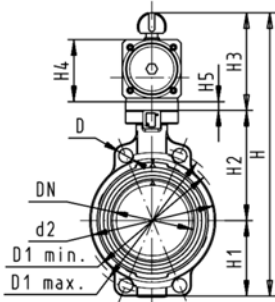
Butterfly valve type 240 ABS FO (Fail safe to open) Without manual override



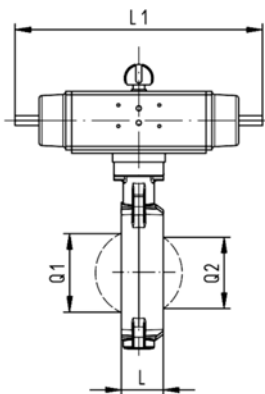
Model:

- Connecting dimension: ISO 7005 PN 10, EN 1092 PN 10, DIN 2501 PN 10, ANSI/ASME B 16.5 Class 150, BS 1560: 1989, BS 4504, JIS B 2220
- Overall length according to EN 558, ISO 5752
- Control range 90°<

d [mm]	DN [mm]	PN	kv-value (Δp=1 bar) [l/min]	EPDM Code
63	50	10	1470	199 240 422
75	65	10	2200	199 240 423
90	80	10	3000	199 240 424
110	100	10	6500	199 240 425
140	125	10	11500	199 240 426
160	150	10	16600	199 240 427
225	200	10	39600	199 240 428



d [mm]	Actuator unit type	D [mm]	D1 min. [mm]	D1 max. [mm]	d2 [mm]	H [mm]	H1 [mm]	H2 [mm]	H3 [mm]	H4 [mm]	H5 [mm]	L [mm]	L1 [mm]
63	PA-30 FO	19	120.0	125.0	104	327	77	134	117	70	15	45	276
75	PA-30 FO	19	139.7	145.0	115	340	83	140	117	70	15	46	276
90	PA-35 FO	19	150.0	160.0	131	361	89	146	126	78	15	49	326
110	PA-40 FO	19	175.0	190.5	161	400	104	167	129	86		56	370
140	PA-45 FO	23	210.0	215.9	187	436	117	181	139	96		64	411
160	PA-50 FO	24	241.3	241.3	215	468	130	189	149	106		72	423
225	PA-55 FO	23	290.0	295.0	267	529	158	210	161	118		73	452



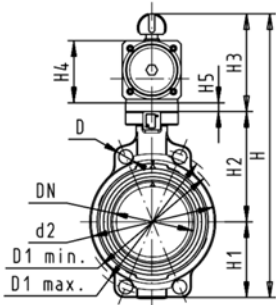
d [mm]	L2 [mm]	Q1 [mm]	Q2 [mm]	closest inch
63	65	40		2
75	65	54	35	2 ½
90	72	67	50	3
110	80	88	74	4
140	90	113	97	5
160	100	139	123	6
225	112	178	169	8



Butterfly valve type 240 ABS FC (Fail safe to close) Without manual override

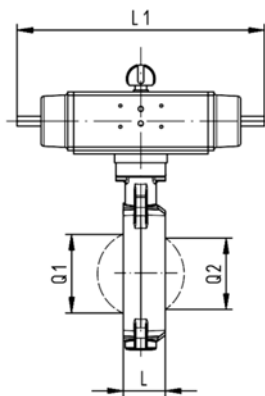
Model:

- Connecting dimension: ISO 7005 PN 10, EN 1092 PN 10, DIN 2501 PN 10, ANSI/ASME B 16.5 Class 150, BS 1560: 1989, BS 4504, JIS B 2220
- Overall length according to EN 558, ISO 5752
- Control range 90°<



d [mm]	DN [mm]	PN	kv-value (Δp=1 bar) [l/min]	EPDM Code
63	50	10	1470	199 240 402
75	65	10	2200	199 240 403
90	80	10	3000	199 240 404
110	100	10	6500	199 240 405
140	125	10	11500	199 240 406
160	150	10	16600	199 240 407
225	200	10	39600	199 240 408

d [mm]	Actuator unit type	D [mm]	D1 min. [mm]	D1 max. [mm]	d2 [mm]	H [mm]	H1 [mm]	H2 [mm]	H3 [mm]	H4 [mm]	H5 [mm]	L [mm]	L1 [mm]
63	PA-30 FC	19	120.0	125.0	104	327	77	134	117	70	15	45	276
75	PA-30 FC	19	139.7	145.0	115	340	83	140	117	70	15	46	276
90	PA-35 FC	19	150.0	160.0	131	361	89	146	126	78	15	49	326
110	PA-40 FC	19	175.0	190.5	161	400	104	167	129	86		56	370
140	PA-45 FC	23	210.0	215.9	187	436	117	181	139	96		64	411
160	PA-50 FC	24	241.3	241.3	215	468	130	189	149	106		72	423
225	PA-55 FC	23	290.0	295.0	267	529	158	210	161	118		73	452



d [mm]	L2 [mm]	Q1 [mm]	Q2 [mm]	closest inch
63	65	40		2
75	65	54	35	2 ½
90	72	67	50	3
110	80	88	74	4
140	90	113	97	5
160	100	139	123	6
225	112	178	169	8

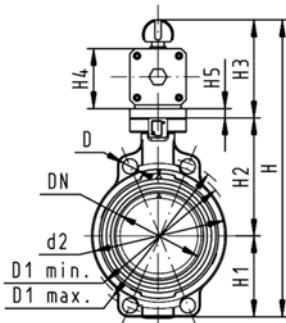


Butterfly valve type 240 ABS DA (Double acting) Without manual override

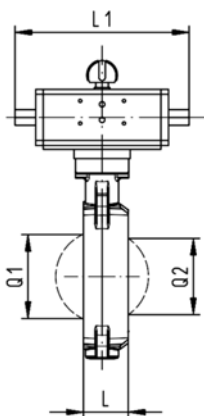
Model:

- Connecting dimension: ISO 7005 PN 10, EN 1092 PN 10, DIN 2501 PN 10, ANSI/ASME B 16.5 Class 150, BS 1560: 1989, BS 4504, JIS B 2220
- Overall length according to EN 558, ISO 5752
- Control range 90°<

d [mm]	DN [mm]	PN	kv-value ($\Delta p=1$ bar) [l/min]	EPDM Code
63	50	10	1470	199 240 442
75	65	10	2200	199 240 443
90	80	10	3000	199 240 444
110	100	10	6500	199 240 445
140	125	10	11500	199 240 446
160	150	10	16600	199 240 447
225	200	10	39600	199 240 448



d [mm]	Actuator unit type	D [mm]	D1 min. [mm]	D1 max. [mm]	d2 [mm]	H [mm]	H1 [mm]	H2 [mm]	H3 [mm]	H4 [mm]	H5 [mm]	L [mm]	L1 [mm]
63	PA-35 DA	19	120.0	125.0	104	317	77	134	107	60	15	45	177
75	PA-35 DA	19	139.7	145.0	115	330	83	140	107	60	15	46	177
90	PA-40 DA	19	150.0	160.0	131	348	89	146	113	66	15	49	190
110	PA-45 DA	19	175.0	190.5	161	372	104	167	102	71		56	235
140	PA-45 DA	23	210.0	215.9	187	408	117	181	111	78		64	235
160	PA-55 DA	24	241.3	241.3	215	448	130	189	129	86		72	279
225	PA-55 DA	23	290.0	295.0	267	507	158	210	139	96		73	279

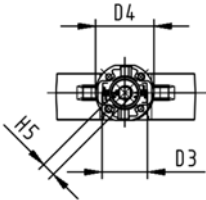
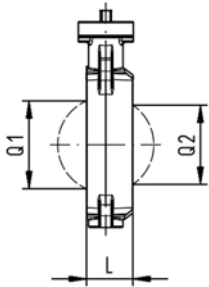
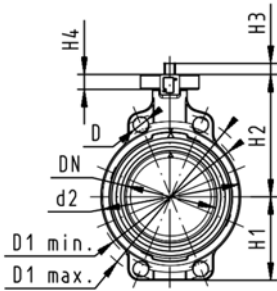


d [mm]	L2 [mm]	Q1 [mm]	Q2 [mm]	closest inch
63	55	40		2
75	55	54	35	2 ½
90	60	67	50	3
110	65	88	74	4
140	72	113	97	5
160	80	139	123	6
225	90	178	169	8

Butterfly valves PP-H

Butterfly valve type 567 PP-H

Bare shaft



Model:

- Material: PP-H
- Connecting dimension: ISO 7005 PN 10, EN 1092 PN 10, DIN 2501 PN 10, ANSI/ASME B 16.5 Class 150, BS 1560: 1989, BS 4504, JIS B 2220
- Overall length according to EN 558, ISO 5752
- Interface F07 for the dimensions DN50-200 according to DIN/ISO 5211
- Interface F10 for the dimensions DN250-300 according to DIN/ISO 5211

d [mm]	DN [mm]	Inch	PN	kv-value ($\Delta p=1$ bar) [l/min]	EPDM Code	FPM Code
63	50	2	10	1470	167 567 802	167 567 822
75	65	2 ½	10	2200	167 567 803	167 567 823
90	80	3	10	3000	167 567 804	167 567 824
110	100	4	10	6500	167 567 805	167 567 825
140	125	5	10	11500	167 567 806	167 567 826
160	150	6	10	16600	167 567 807	167 567 827
225	200	8	10	39600	167 567 808	167 567 828
280	250	10	8	55200	167 567 809	167 567 829
315	300	12	8	80000	167 567 810	167 567 830

d [mm]	D [mm]	D1 min. [mm]	D1 max. [mm]	d2 [mm]	D3 [mm]	D4 [mm]	H [mm]	H1 [mm]	H2 [mm]	H3 [mm]	H4 [mm]	H5 [mm]	L [mm]	Q1 [mm]
63	19	120.0	125.0	104	70	90	222	77	134	27	23	11	45	40
75	19	139.7	145.0	115	70	90	235	83	140	27	23	11	46	54
90	19	150.0	160.0	131	70	90	247	89	146	27	23	11	49	67
110	19	175.0	190.5	161	70	90	287	104	167	16	23	14	56	88
140	23	210.0	215.9	187	70	90	313	117	181	16	23	14	64	113
160	24	241.3	241.3	215	70	90	335	130	189	19	23	17	72	139
225	23	290.0	295.0	267	70	90	387	158	210	19	23	17	73	178
280	25	353.0	362.0	329	102	125	509	205	264	40	23	22	113	210
315	25	400.0	432.0	379	102	125	553	228	285	40	23	22	113	256

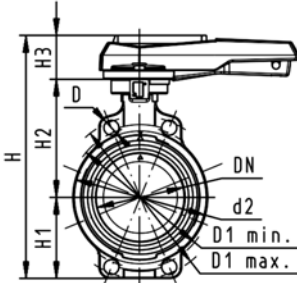
d [mm]	Q2 [mm]
63	
75	35
90	50
110	74
140	97
160	123
225	169
280	207
315	253



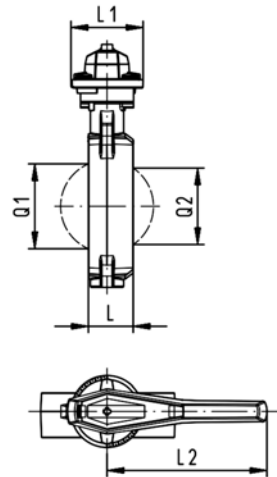
PROGEF Standard Butterfly valve type 567 Hand lever with ratchet settings

Model:

- Material: PP-H
- Connecting dimension: ISO 7005 PN 10, EN 1092 PN 10, DIN 2501 PN 10, ANSI/ASME B 16.5 Class 150, BS 1560: 1989, BS 4504, JIS B 2220
- Overall length according to EN 558, ISO 5752
- We recommend for the dimensions DN250 and DN300 only 6 bar maximum system pressure for the hand lever version



d [mm]	DN [mm]	Inch	PN	kv-value ($\Delta p=1$ bar) [l/min]	EPDM Code	FPM Code
63	50	2	10	1470	167 567 002	167 567 022
75	65	2 1/2	10	2200	167 567 003	167 567 023
90	80	3	10	3000	167 567 004	167 567 024
110	100	4	10	6500	167 567 005	167 567 025
140	125	5	10	11500	167 567 006	167 567 026
160	150	6	10	16600	167 567 007	167 567 027
225	200	8	10	39600	167 567 008	167 567 028
280	250	10	8	55200	167 567 009	167 567 029
315	300	12	8	80000	167 567 010	167 567 030



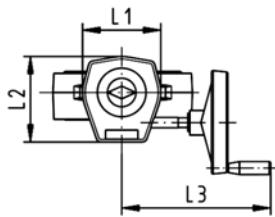
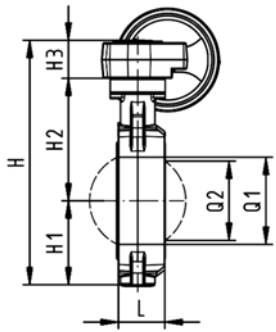
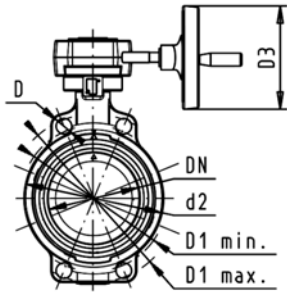
d [mm]	D [mm]	D1 min. [mm]	D1 max. [mm]	d2 [mm]	H [mm]	H1 [mm]	H2 [mm]	H3 [mm]	L [mm]	L1 [mm]	L2 [mm]	Q1 [mm]	Q2 [mm]
63	19	120.0	125.0	104	264	77	134	54	45	106	205	40	
75	19	139.7	145.0	115	277	83	140	54	46	106	205	54	35
90	19	150.0	160.0	131	289	89	146	54	49	106	205	67	50
110	19	175.0	190.5	161	325	104	167	55	56	106	255	88	74
140	23	210.0	215.9	187	352	117	181	55	64	106	255	113	97
160	24	241.3	241.3	215	373	130	189	55	72	106	255	139	123
225	23	290.0	295.0	267	435	158	210	67	73	140	408	178	169
280	25	353.0	362.0	329	554	205	264	85	113	149	408	210	207
315	25	400.0	432.0	379	598	228	285	85	113	149	408	256	253



PROGEF Standard Butterfly valve type 567 Reduction gear with handwheel

Model:

- Material: PP-H
- Connecting dimension: ISO 7005 PN 10, EN 1092 PN 10, DIN 2501 PN 10, ANSI/ASME B 16.5 Class 150, BS 1560: 1989, BS 4504, JIS B 2220
- Overall length according to EN 558, ISO 5752



d [mm]	DN [mm]	Inch	PN	kv-value (Δp=1 bar) [l/min]	EPDM Code	FPM Code
63	50	2	10	1470	167 567 042	167 567 062
75	65	2 ½	10	2200	167 567 043	167 567 063
90	80	3	10	3000	167 567 044	167 567 064
110	100	4	10	6500	167 567 045	167 567 065
140	125	5	10	11500	167 567 046	167 567 066
160	150	6	10	16600	167 567 047	167 567 067
225	200	8	10	39600	167 567 048	167 567 068
280	250	10	8	55200	167 567 049	167 567 069
315	300	12	8	80000	167 567 050	167 567 070

d [mm]	D [mm]	D1 min. [mm]	D1 max. [mm]	d2 [mm]	D3 [mm]	H [mm]	H1 [mm]	H2 [mm]	H3 [mm]	L [mm]	L1 [mm]	L2 [mm]	L3 [mm]	Q1 [mm]
63	19	120.0	125.0	104	160	278	77	134	60	45	120	132	236	40
75	19	139.7	145.0	115	160	291	83	140	60	46	120	132	236	54
90	19	150.0	160.0	131	160	303	89	146	60	49	120	132	236	67
110	19	175.0	190.5	160	160	339	104	167	60	56	120	132	236	88
140	23	210.0	215.9	187	160	365	117	181	60	64	120	132	236	113
160	24	241.3	241.3	215	160	387	130	189	60	72	120	132	236	139
225	23	290.0	295.0	267	160	436	158	210	60	73	120	132	236	178
280	25	353.0	362.0	329	160	529	205	264	60	113	134	151	261	210
315	25	400.0	432.0	379	160	573	228	285	60	113	134	151	261	256

d [mm]	Q2 [mm]
63	
75	35
90	50
110	74
140	97
160	123
225	169
280	207
315	253

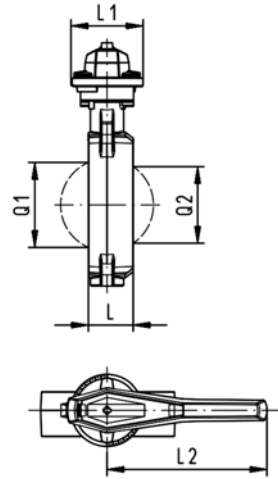
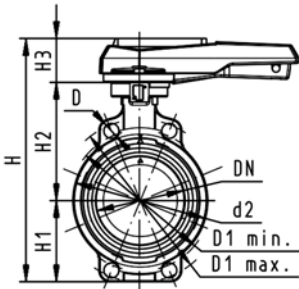
Butterfly valves PROGEF® SF

PROGEF Plus silicone free Butterfly valve type 567 Hand lever with ratchet settings



Model:

- Material: PP-H / silicone free cleaned
- Connecting dimension: ISO 7005 PN 10, EN 1092 PN 10, DIN 2501 PN 10, ANSI/ASME B 16.5 Class 150, BS 1560: 1989, BS 4504, JIS B 2220
- Overall length according to EN 558, ISO 5752



d [mm]	DN [mm]	Inch	PN	kv-value (Δp=1 bar) [l/min]	EPDM Code	FPM Code
63	50	2	10	1470	167 567 402	167 567 422
75	65	2 ½	10	2200	167 567 403	167 567 423
90	80	3	10	3000	167 567 404	167 567 424
110	100	4	10	6500	167 567 405	167 567 425
140	125	5	10	11500	167 567 406	167 567 426
160	150	6	10	16600	167 567 407	167 567 427
225	200	8	10	39600	167 567 408	167 567 428

d [mm]	D [mm]	D1 min. [mm]	D1 max. [mm]	d2 [mm]	H [mm]	H1 [mm]	H2 [mm]	H3 [mm]	L [mm]	L1 [mm]	L2 [mm]	Q1 [mm]	Q2 [mm]
63	19	120.0	125.0	104	264	77	134	54	45	106	205	40	
75	19	139.7	145.0	115	277	83	140	54	46	106	205	54	35
90	19	150.0	160.0	131	289	89	146	54	49	106	205	67	50
110	19	175.0	190.5	161	325	104	167	55	56	106	255	88	74
140	23	210.0	215.9	187	352	117	181	55	64	106	255	113	97
160	24	241.3	241.3	215	373	130	189	55	72	106	255	139	123
225	23	290.0	295.0	267	435	158	210	67	73	140	408	178	169

Butterfly valves electric PP-H

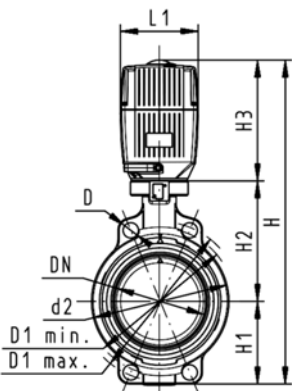
PROGEF Standard Butterfly valve type 140 24V Without manual override



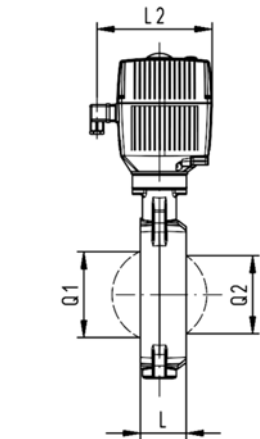
Model:

- Material: PP-H
- Connecting dimension: ISO 7005 PN 10, EN 1092 PN 10, DIN 2501 PN 10, ANSI/ASME B 16.5 Class 150, BS 1560: 1989, BS 4504, JIS B 2220
- Overall length according to EN 558, ISO 5752
- Voltage 24 V AC/DC
- Control time 15 s/90°<) EA31
- Control time 25s/90°<) EA42
- Control range 90°<)
- Actuator with integrated emergency manual override standard
- The dimension DN300 on request

d [mm]	DN [mm]	Inch	PN	kv-value ($\Delta p=1$ bar) [l/min]	EPDM Code	FPM Code
63	50	2	10	1470	199 140 442	199 140 462
75	65	2 ½	10	2200	199 140 443	199 140 463
90	80	3	10	3000	199 140 444	199 140 464
110	100	4	10	6500	199 140 445	199 140 465
140	125	5	10	11500	199 140 446	199 140 466
160	150	6	10	16600	199 140 447	199 140 467
225	200	8	10	39600	199 140 448	199 140 468
280	250	10	6	55200	199 140 449	199 140 469
315	300	12	4	80000	199 140 450	199 140 470



d [mm]	Actuator unit type	D [mm]	D1 min. [mm]	D1 max. [mm]	d2 [mm]	H [mm]	H1 [mm]	H2 [mm]	H3 [mm]	L [mm]	L1 [mm]	L2 [mm]	Q1 [mm]
63	EA-31	19	120.0	125.0	104	400	77	134	188	45	122	180	40
75	EA-31	19	139.7	145.0	115	413	83	140	188	46	122	180	54
90	EA-31	19	150.0	160.0	131	428	89	146	188	49	122	180	67
110	EA-31	19	175.0	190.5	161	460	104	167	188	56	122	180	88
140	EA-31	23	210.0	215.9	187	487	117	181	188	64	122	180	113
160	EA-31	24	241.3	241.3	215	508	130	189	188	72	122	180	139
225	EA-42	23	290.0	295.0	267	575	158	210	208	73	122	180	178
280	EA-42	25	353.0	362.0	329	677	205	264	208	113	122	180	210
315	EA-42	25	400.0	432.0	379	721	228	285	208	113	122	180	256



d [mm]	Q2 [mm]
63	
75	35
90	50
110	74
140	97
160	123
225	169
280	207
315	253

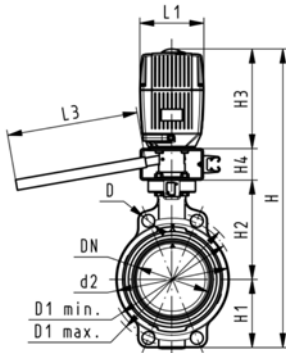


PROGEF Standard Butterfly valve type 140 24V With manual override

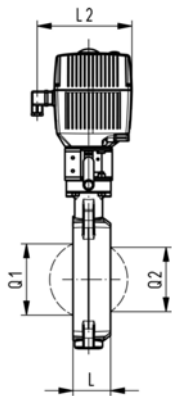
Model:

- Material: PP-H
- Connecting dimension: ISO 7005 PN 10, EN 1092 PN 10, DIN 2501 PN 10, ANSI/ASME B 16.5 Class 150, BS 1560: 1989, BS 4504, JIS B 2220
- Overall length according to EN 558, ISO 5752
- Voltage 24 V AC/DC
- Control time 15 s/90°<) EA31
- Control time 25s/90°<) EA42
- Control range 90°<)
- Actuator with integrated emergency manual override standard

d [mm]	DN [mm]	Inch	PN	kv-value ($\Delta p=1$ bar) [l/min]	EPDM Code	FPM Code
63	50	2	10	1470	199 140 402	199 140 422
75	65	2 ½	10	2200	199 140 403	199 140 423
90	80	3	10	3000	199 140 404	199 140 424
110	100	4	10	6500	199 140 405	199 140 425
140	125	5	10	11500	199 140 406	199 140 426
160	150	6	10	16600	199 140 407	199 140 427
225	200	8	10	39600	199 140 408	199 140 428



d [mm]	Actuator unit type	D [mm]	D1 min. [mm]	D1 max. [mm]	d2 [mm]	H [mm]	H1 [mm]	H2 [mm]	H3 [mm]	H4 [mm]	L [mm]	L1 [mm]	L2 [mm]
63	EA-31	19	120.0	125.0	104	460	77	134	188	60	45	122	180
75	EA-31	19	139.7	145.0	115	473	83	140	188	60	46	122	180
90	EA-31	19	150.0	160.0	131	488	89	146	188	60	49	122	180
110	EA-31	19	175.0	190.5	161	520	104	167	188	60	56	122	180
140	EA-31	23	210.0	215.9	187	547	117	181	188	60	64	122	180
160	EA-31	24	241.3	241.3	215	568	130	189	188	60	72	122	180
225	EA-42	23	290.0	295.0	267	635	158	210	208	60	73	122	180



d [mm]	L3 [mm]	Q1 [mm]	Q2 [mm]
63	250	40	
75	250	54	35
90	250	67	50
110	250	88	74
140	250	113	97
160	250	139	123
225	250	178	169

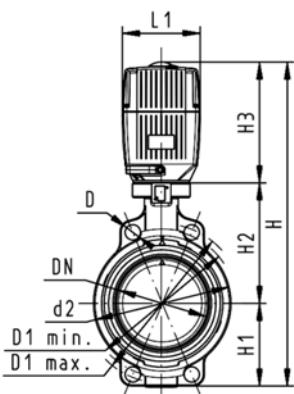


PROGEF Standard Butterfly valve type 140 100-230V Without manual override

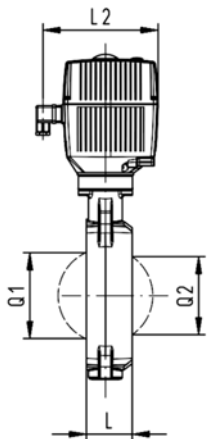
Model:

- Material: PP-H
- Connecting dimension: ISO 7005 PN 10, EN 1092 PN 10, DIN 2501 PN 10, ANSI/ASME B 16.5 Class 150, BS 1560: 1989, BS 4504, JIS B 2220
- Overall length according to EN 558, ISO 5752
- Voltage 100-230 V, 50-60 Hz
- Control time 15 s/90°<) EA31
- Control time 25s/90°<) EA42
- Control range 90°<)
- Actuator with integrated emergency manual override standard
- The dimension DN300 on request

d [mm]	DN [mm]	Inch	PN	kv-value ($\Delta p=1$ bar) [l/min]	EPDM Code	FPM Code
63	50	2	10	1470	199 140 362	199 140 382
75	65	2 ½	10	2200	199 140 363	199 140 383
90	80	3	10	3000	199 140 364	199 140 384
110	100	4	10	6500	199 140 365	199 140 385
140	125	5	10	11500	199 140 366	199 140 386
160	150	6	10	16600	199 140 367	199 140 387
225	200	8	10	39600	199 140 368	199 140 388
280	250	10	6	55200	199 140 369	199 140 389
315	300	12	4	80000	199 140 370	199 140 390



d [mm]	Actuator unit type	D [mm]	D1 min. [mm]	D1 max. [mm]	d2 [mm]	H [mm]	H1 [mm]	H2 [mm]	H3 [mm]	L [mm]	L1 [mm]	L2 [mm]	Q1 [mm]
63	EA-31	19	120.0	125.0	104	400	77	134	188	45	122	180	40
75	EA-31	19	139.7	145.0	115	413	83	140	188	46	122	180	54
90	EA-31	19	150.0	160.0	131	428	89	146	188	49	122	180	67
110	EA-31	19	175.0	190.5	161	460	104	167	188	56	122	180	88
140	EA-31	23	210.0	215.9	187	487	117	181	188	64	122	180	113
160	EA-31	24	241.3	241.3	215	508	130	189	188	72	122	180	139
225	EA-42	23	290.0	295.0	267	575	158	210	208	73	122	180	178
280	EA-42	25	353.0	362.0	329	677	205	264	208	113	122	180	210
315	EA-42	25	400.0	432.0	379	721	228	285	208	113	122	180	256



d [mm]	Q2 [mm]
63	
75	35
90	50
110	74
140	97
160	123
225	169
280	207
315	253

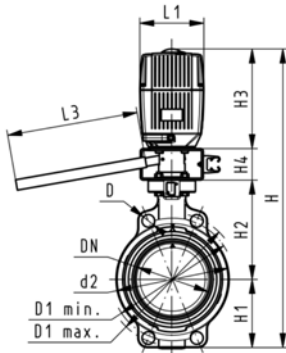


PROGEF Standard Butterfly valve type 140 100-230V With manual override

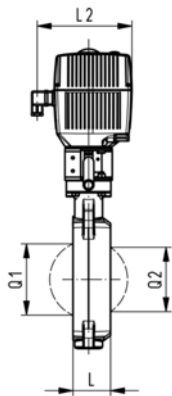
Model:

- Material: PP-H
- Connecting dimension: ISO 7005 PN 10, EN 1092 PN 10, DIN 2501 PN 10, ANSI/ASME B 16.5 Class 150, BS 1560: 1989, BS 4504, JIS B 2220
- Overall length according to EN 558, ISO 5752
- Voltage 100-230 V, 50-60 Hz
- Control time 15 s/90°<) EA31
- Control time 25s/90°<) EA42
- Control range 90°<)
- Actuator with integrated emergency manual override standard

d [mm]	DN [mm]	Inch	PN	kv-value (Δp=1 bar) [l/min]	EPDM Code	FPM Code
63	50	2	10	1470	199 140 322	199 140 342
75	65	2 ½	10	2200	199 140 323	199 140 343
90	80	3	10	3000	199 140 324	199 140 344
110	100	4	10	6500	199 140 325	199 140 345
140	125	5	10	11500	199 140 326	199 140 346
160	150	6	10	16600	199 140 327	199 140 347
225	200	8	10	39600	199 140 328	199 140 348



d [mm]	Actuator unit type	D [mm]	D1 min. [mm]	D1 max. [mm]	d2 [mm]	H [mm]	H1 [mm]	H2 [mm]	H3 [mm]	H4 [mm]	L [mm]	L1 [mm]	L2 [mm]
63	EA-31	19	120.0	125.0	104	460	77	134	188	60	45	122	180
75	EA-31	19	139.7	145.0	115	473	83	140	188	60	46	122	180
90	EA-31	19	150.0	160.0	131	488	89	146	188	60	49	122	180
110	EA-31	19	175.0	190.5	161	520	104	167	188	60	56	122	180
140	EA-31	23	210.0	215.9	187	547	117	181	188	60	64	122	180
160	EA-31	24	241.3	241.3	215	568	130	189	188	60	72	122	180
225	EA-42	23	290.0	295.0	267	635	158	210	208	60	73	122	180



d [mm]	L3 [mm]	Q1 [mm]	Q2 [mm]
63	250	40	
75	250	54	35
90	250	67	50
110	250	88	74
140	250	113	97
160	250	139	123
225	250	178	169

Butterfly valves pneumatic PP-H

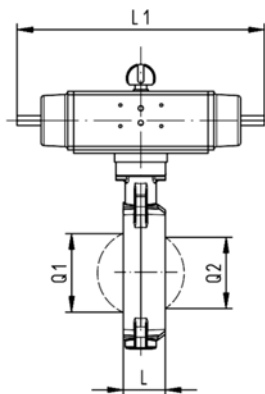
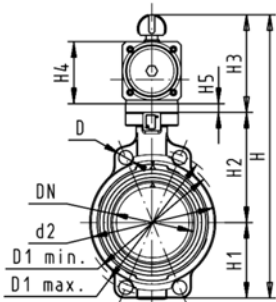
Butterfly valve type 240 PP-H

FC (Fail safe to close)

Without manual override

Model:

- Material: PP-H
- Connecting dimension: ISO 7005 PN 10, EN 1092 PN 10, DIN 2501 PN 10, ANSI/ASME B 16.5 Class 150, BS 1560: 1989, BS 4504, JIS B 2220
- Overall length according to EN 558, ISO 5752
- Control range 90°<



d [mm]	DN [mm]	Inch	PN	kv-value ($\Delta p=1$ bar) [l/min]	EPDM Code	FPM Code
63	50	2	10	1470	199 240 282	199 240 302
75	65	2 ½	10	2200	199 240 283	199 240 303
90	80	3	10	3000	199 240 284	199 240 304
110	100	4	10	6500	199 240 285	199 240 305
140	125	5	10	11500	199 240 286	199 240 306
160	150	6	10	16600	199 240 287	199 240 307
225	200	8	10	39600	199 240 288	199 240 308
280	250	10	8	55200	199 240 289	199 240 309
315	300	12	8	80000	199 240 290	199 240 310

d [mm]	Actuator unit type	D [mm]	D1 min. [mm]	D1 max. [mm]	d2 [mm]	H [mm]	H1 [mm]	H2 [mm]	H3 [mm]	H4 [mm]	H5 [mm]	L [mm]	L1 [mm]
63	PA-30 FC	19	120.0	125.0	104	327	77	134	117	70	15	45	276
75	PA-30 FC	19	139.7	145.0	115	340	83	140	117	70	15	46	276
90	PA-35 FC	19	150.0	160.0	131	361	89	146	126	78	15	49	326
110	PA-40 FC	19	175.0	190.5	161	400	104	167	129	86		56	370
140	PA-45 FC	23	210.0	215.9	187	436	117	181	139	96		64	411
160	PA-50 FC	24	241.3	241.3	215	468	130	189	149	106		72	423
225	PA-55 FC	23	290.0	295.0	267	529	158	210	161	118		73	452
280	PA-65 FC	25	353.0	362.0	329	808	205	264	191	148		113	648
315	PA-70 FC	25	400.0	432.0	379	866	228	285	196	157		113	663

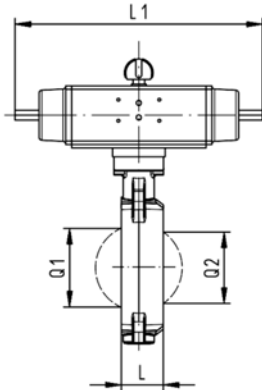
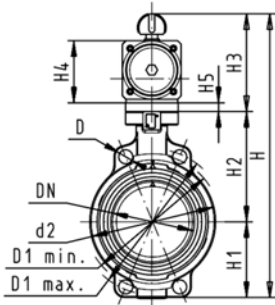
d [mm]	L2 [mm]	Q1 [mm]	Q2 [mm]
63	65	40	
75	65	54	35
90	72	67	50
110	80	88	74
140	90	113	97
160	100	139	123
225	112	178	169
280	137	210	207
315	145	256	253



Butterfly valve type 240 PP-H FO (Fail safe to open) Without manual override

Model:

- Material: PP-H
- Connecting dimension: ISO 7005 PN 10, EN 1092 PN 10, DIN 2501 PN 10, ANSI/ASME B 16.5 Class 150, BS 1560: 1989, BS 4504, JIS B 2220
- Overall length according to EN 558, ISO 5752
- Control range 90°<



d [mm]	DN [mm]	Inch	PN	kv-value ($\Delta p=1$ bar) [l/min]	EPDM Code	FPM Code
63	50	2	10	1470	199 240 322	199 240 342
75	65	2 1/2	10	2200	199 240 323	199 240 343
90	80	3	10	3000	199 240 324	199 240 344
110	100	4	10	6500	199 240 325	199 240 345
140	125	5	10	11500	199 240 326	199 240 346
160	150	6	10	16600	199 240 327	199 240 347
225	200	8	10	39600	199 240 328	199 240 348
280	250	10	8	55200	199 240 329	199 240 349
315	300	12	8	80000	199 240 330	199 240 350

d [mm]	Actuator unit type	D [mm]	D1 min. [mm]	D1 max. [mm]	d2 [mm]	H [mm]	H1 [mm]	H2 [mm]	H3 [mm]	H4 [mm]	H5 [mm]	L [mm]	L1 [mm]
63	PA-30 FO	19	120.0	125.0	104	327	77	134	117	70	15	45	276
75	PA-30 FO	19	139.7	145.0	115	340	83	140	117	70	15	46	276
90	PA-35 FO	19	150.0	160.0	131	361	89	146	126	78	15	49	326
110	PA-40 FO	19	175.0	190.5	161	400	104	167	129	86		56	370
140	PA-45 FO	23	210.0	215.9	187	436	117	181	139	96		64	411
160	PA-50 FO	24	241.3	241.3	215	468	130	189	149	106		72	423
225	PA-55 FO	23	290.0	295.0	267	529	158	210	161	118		73	452
280	PA-65 FO	25	353.0	362.0	329	808	205	264	191	148		113	648
315	PA-70 FO	25	400.0	432.0	379	866	228	285	196	157		113	663

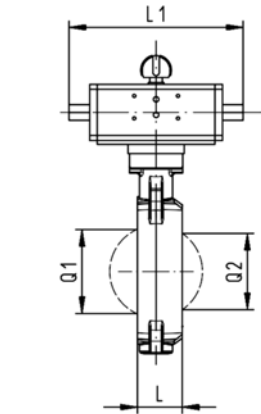
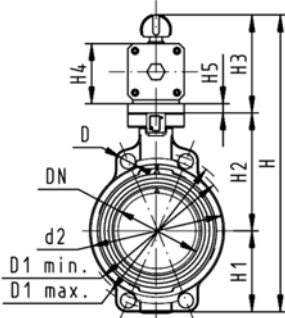
d [mm]	L2 [mm]	Q1 [mm]	Q2 [mm]
63	65	40	
75	65	54	35
90	72	67	50
110	80	88	74
140	90	113	97
160	100	139	123
225	112	178	169
280	137	210	207
315	145	256	253



PROGEF Standard Butterfly valve type 240 DA (Double acting) Without manual override

Model:

- Material: PP-H
- Connecting dimension: ISO 7005 PN 10, EN 1092 PN 10, DIN 2501 PN 10, ANSI/ASME B 16.5 Class 150, BS 1560: 1989, BS 4504, JIS B 2220
- Overall length according to EN 558, ISO 5752
- Control range 90°<



d [mm]	DN [mm]	Inch	PN	kv-value ($\Delta p=1$ bar) [l/min]	EPDM Code	FPM Code
63	50	2	10	1470	199 240 362	199 240 382
75	65	2 ½	10	2200	199 240 363	199 240 383
90	80	3	10	3000	199 240 364	199 240 384
110	100	4	10	6500	199 240 365	199 240 385
140	125	5	10	11500	199 240 366	199 240 386
160	150	6	10	16600	199 240 367	199 240 387
225	200	8	10	39600	199 240 368	199 240 388
280	250	10	8	55200	199 240 369	199 240 389
315	300	12	8	80000	199 240 370	199 240 390

d [mm]	Actuator unit type	D [mm]	D1 min. [mm]	D1 max. [mm]	d2 [mm]	H [mm]	H1 [mm]	H2 [mm]	H3 [mm]	H4 [mm]	H5 [mm]	L [mm]	L1 [mm]
63	PA-35 DA	19	120.0	125.0	104	317	77	134	107	60	15	45	177
75	PA-35 DA	19	139.7	145.0	115	330	83	140	107	60	15	46	177
90	PA-40 DA	19	150.0	160.0	131	348	89	146	113	66	15	49	190
110	PA-45 DA	19	175.0	190.5	161	372	104	167	102	71		56	235
140	PA-45 DA	23	210.0	215.9	187	408	117	181	111	78		64	235
160	PA-55 DA	24	241.3	241.3	215	448	130	189	129	86		72	279
225	PA-55 DA	23	290.0	295.0	267	507	158	210	139	96		73	279
280	PA-65 DA	25	353.0	362.0	329	748	205	264	161	118		113	350
315	PA-70 DA	25	400.0	432.0	379	816	228	285	173	130		113	381

d [mm]	L2 [mm]	Q1 [mm]	Q2 [mm]
63	55	40	
75	55	54	35
90	60	67	50
110	65	88	74
140	72	113	97
160	80	139	123
225	90	178	169
280	112	210	207
315	125	256	253

Butterfly valves SYGEF®

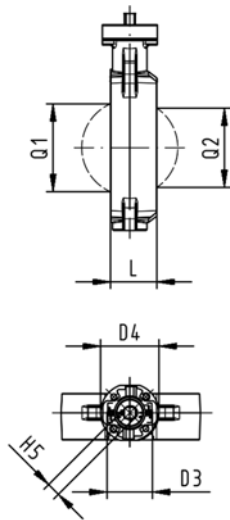
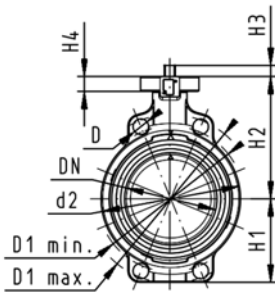


SYGEF® standard Butterfly valve type 567 PVDF Bare shaft

Model:

- Material: PVDF
- Connecting dimension: ISO 7005 PN 10, EN 1092 PN 10, DIN 2501 PN 10, ANSI/ASME B 16.5 Class 150, BS 1560: 1989, BS 4504, JIS B 2220
- Overall length according to EN 558, ISO 5752
- Interface F07 for the dimensions DN50-200 according to DIN/ISO 5211
- Interface F10 for the dimensions DN250-300 according to DIN/ISO 5211

Model with PTFE seal in DN250 and DN300 available from June 2009



d [mm]	DN [mm]	Inch	PN	kv-value (Δp=1 bar) [l/min]	FPM Code	PTFE Code
63	50	2	10	1470	175 567 822	175 567 842
75	65	2 ½	10	2200	175 567 823	175 567 843
90	80	3	10	3000	175 567 824	175 567 844
110	100	4	10	6500	175 567 825	175 567 845
140	125	5	10	11500	175 567 826	175 567 846
160	150	6	10	16600	175 567 827	175 567 847
225	200	8	10	39600	175 567 828	175 567 848
280	250	10	10	55200	175 567 829	175 567 849
315	300	12	10	80000	175 567 830	175 567 850

d [mm]	D [mm]	D1 min. [mm]	D1 max. [mm]	d2 [mm]	D3 [mm]	D4 [mm]	H [mm]	H1 [mm]	H2 [mm]	H3 [mm]	H4 [mm]	H5 [mm]	L [mm]	Q1 [mm]
63	19	120.0	125.0	104	70	90	222	77	134	27	23	11	45	40
75	19	139.7	145.0	115	70	90	235	83	140	27	23	11	46	54
90	19	150.0	160.0	131	70	90	247	89	146	27	23	11	49	67
110	19	175.0	190.5	161	70	90	287	104	167	16	23	14	56	88
140	23	210.0	215.9	187	70	90	313	117	181	16	23	14	64	113
160	24	241.3	241.3	215	70	90	335	130	189	19	23	17	72	139
225	23	290.0	295.0	267	70	90	387	158	210	19	23	17	73	178
280	25	353.0	362.0	329	102	125	509	205	264	40	23	22	113	210
315	25	400.0	432.0	379	102	125	553	228	285	40	23	22	113	256

d [mm]	Q2 [mm]
63	
75	35
90	50
110	74
140	97
160	123
225	169
280	207
315	253

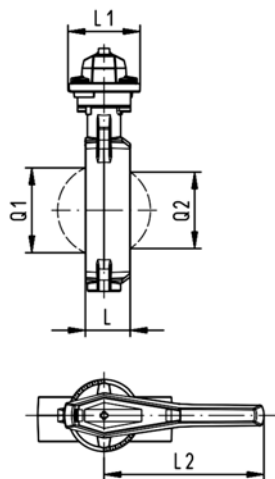
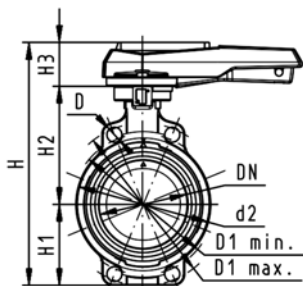


SYGEF Standard Butterfly valve type 567 Hand lever with ratchet settings

Model:

- Material: PVDF
- Connecting dimension: ISO 7005 PN 10, EN 1092 PN 10, DIN 2501 PN 10, ANSI/ASME B 16.5 Class 150, BS 1560: 1989, BS 4504, JIS B 2220
- Overall length according to EN 558, ISO 5752
- We recommend for the dimensions DN250 and DN300 only 6 bar maximum system pressure for the hand lever version

Model with PTFE seal in DN250 and DN300 available from June 2009



d [mm]	DN [mm]	Inch	PN	kv-value ($\Delta p=1$ bar) [l/min]	FPM Code	PTFE Code
63	50	2	10	1470	175 567 002	175 567 202
75	65	2 ½	10	2200	175 567 003	175 567 203
90	80	3	10	3000	175 567 004	175 567 204
110	100	4	10	6500	175 567 005	175 567 205
140	125	5	10	11500	175 567 006	175 567 206
160	150	6	10	16600	175 567 007	175 567 207
225	200	8	10	39600	175 567 008	175 567 208
280	250	10	10	55200	175 567 009	175 567 209
315	300	12	10	80000	175 567 010	175 567 210

d [mm]	D [mm]	D1 min. [mm]	D1 max. [mm]	d2 [mm]	H [mm]	H1 [mm]	H2 [mm]	H3 [mm]	L [mm]	L1 [mm]	L2 [mm]	Q1 [mm]	Q2 [mm]
63	19	120.0	125.0	104	264	77	134	54	45	106	205	40	
75	19	139.7	145.0	115	277	83	140	54	46	106	205	54	35
90	19	150.0	160.0	131	289	89	146	54	49	106	205	67	50
110	19	175.0	190.5	161	325	104	167	55	56	106	255	88	74
140	23	210.0	215.9	187	352	117	181	55	64	106	255	113	97
160	24	241.3	241.3	215	373	130	189	55	72	106	255	139	123
225	23	290.0	295.0	267	435	158	210	67	73	140	408	178	169
280	25	353.0	362.0	329	554	205	264	85	113	149	408	210	207
315	25	400.0	432.0	379	598	228	285	85	113	149	408	256	253

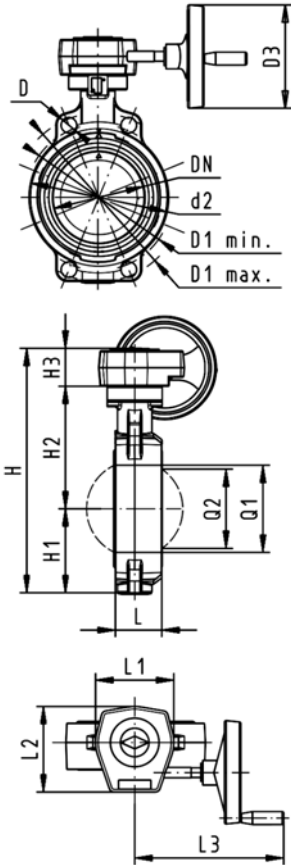


SYGEF Standard Butterfly valve type 567 Reduction gear with handwheel

Model:

- Material: PVDF
- Connecting dimension: ISO 7005 PN 10, EN 1092 PN 10, DIN 2501 PN 10, ANSI/ASME B 16.5 Class 150, BS 1560: 1989, BS 4504, JIS B 2220
- Overall length according to EN 558, ISO 5752

Model with PTFE seal in DN250 and DN300 available from June 2009



d [mm]	DN [mm]	Inch	PN	kv-value ($\Delta p=1$ bar) [l/min]	FPM Code	PTFE Code
63	50	2	10	1470	175 567 022	175 567 222
75	65	2 1/2	10	2200	175 567 023	175 567 223
90	80	3	10	3000	175 567 024	175 567 224
110	100	4	10	6500	175 567 025	175 567 225
140	125	5	10	11500	175 567 026	175 567 226
160	150	6	10	16600	175 567 027	175 567 227
225	200	8	10	39600	175 567 028	175 567 228
280	250	10	10	55200	175 567 029	175 567 229
315	300	12	10	80000	175 567 030	175 567 230

d [mm]	D [mm]	D1 min. [mm]	D1 max. [mm]	d2 [mm]	D3 [mm]	H [mm]	H1 [mm]	H2 [mm]	H3 [mm]	L [mm]	L1 [mm]	L2 [mm]	L3 [mm]	Q1 [mm]
63	19	120.0	125.0	104	160	278	77	134	60	45	120	132	236	40
75	19	139.7	145.0	115	160	291	83	140	60	46	120	132	236	54
90	19	150.0	160.0	131	160	303	89	146	60	49	120	132	236	67
110	19	175.0	190.5	160	160	339	104	167	60	56	120	132	236	88
140	23	210.0	215.9	187	160	365	117	181	60	64	120	132	236	113
160	24	241.3	241.3	215	160	387	130	189	60	72	120	132	236	139
225	23	290.0	295.0	267	160	436	158	210	60	73	120	132	236	178
280	25	353.0	362.0	329	160	529	205	264	60	113	134	151	261	210
315	25	400.0	432.0	379	160	573	228	285	60	113	134	151	261	256

d [mm]	Q2 [mm]
63	
75	35
90	50
110	74
140	97
160	123
225	169
280	207
315	253

Butterfly valves electric SYGEF®

SYGEF Standard Butterfly valve type 140 24V Without manual override

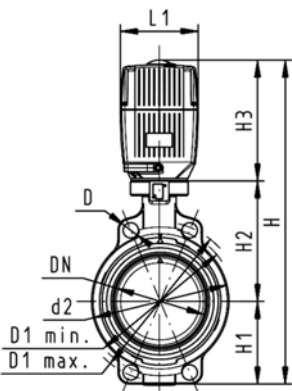


Model:

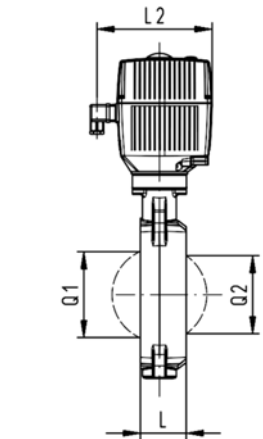
- Material: PVDF
- Connecting dimension: ISO 7005 PN 10, EN 1092 PN 10, DIN 2501 PN 10, ANSI/ASME B 16.5 Class 150, BS 1560: 1989, BS 4504, JIS B 2220
- Overall length according to EN 558, ISO 5752
- Voltage 24 V AC/DC
- Control time 15 s/90°<) EA31
- Control time 25s/90°<) EA42
- Control range 90°<)
- Actuator with integrated emergency manual override standard

Model with PTFE seal in DN250 and DN300 available from June 2009

d [mm]	DN [mm]	Inch	PN	kv-value (Δp=1 bar) [l/min]	FPM Code	PTFE Code
63	50	2	10	1470	199 140 622	199 140 662
75	65	2 ½	10	2200	199 140 623	199 140 663
90	80	3	10	3000	199 140 624	199 140 664
110	100	4	10	6500	199 140 625	199 140 665
140	125	5	10	11500	199 140 626	199 140 666
160	150	6	10	16600	199 140 627	199 140 667
225	200	8	10	39600	199 140 628	199 140 668
280	250	10	6	55200	199 140 629	199 140 669
315	300	12	4	80000	199 140 630	199 140 670



d [mm]	Actuator unit type	D [mm]	D1 min. [mm]	D1 max. [mm]	d2 [mm]	H [mm]	H1 [mm]	H2 [mm]	H3 [mm]	L [mm]	L1 [mm]	L2 [mm]	Q1 [mm]
63	EA-31	19	120.0	125.0	104	400	77	134	188	45	122	180	40
75	EA-31	19	139.7	145.0	115	413	83	140	188	46	122	180	54
90	EA-31	19	150.0	160.0	131	428	89	146	188	49	122	180	67
110	EA-31	19	175.0	190.5	161	460	104	167	188	56	122	180	88
140	EA-31	23	210.0	215.9	187	487	117	181	188	64	122	180	113
160	EA-31	24	241.3	241.3	215	508	130	189	188	72	122	180	139
225	EA-42	23	290.0	295.0	267	575	158	210	208	73	122	180	178
280	EA-42	25	353.0	362.0	329	677	205	264	208	113	122	180	210
315	EA-42	25	400.0	432.0	379	721	228	285	208	113	122	180	256



d [mm]	Q2 [mm]
63	
75	35
90	50
110	74
140	97
160	123
225	169
280	207
315	253

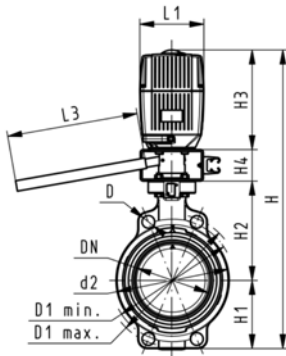


SYGEF Standard Butterfly valve type 140 24V With manual override

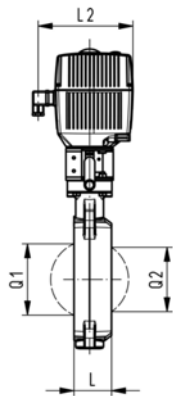
Model:

- Material: PVDF
- Connecting dimension: ISO 7005 PN 10, EN 1092 PN 10, DIN 2501 PN 10, ANSI/ASME B 16.5 Class 150, BS 1560: 1989, BS 4504, JIS B 2220
- Overall length according to EN 558, ISO 5752
- Voltage 24 V AC/DC
- Control time 15 s/90°<) EA31
- Control time 25s/90°<) EA42
- Control range 90°<)
- Actuator with integrated emergency manual override standard

d [mm]	DN [mm]	Inch	PN	kv-value (Δp=1 bar) [l/min]	FPM Code
63	50	2	10	1470	199 140 602
75	65	2 ½	10	2200	199 140 603
90	80	3	10	3000	199 140 604
110	100	4	10	6500	199 140 605
140	125	5	10	11500	199 140 606
160	150	6	10	16600	199 140 607
225	200	8	10	39600	199 140 608



d [mm]	Actuator unit type	D [mm]	D1 min. [mm]	D1 max. [mm]	d2 [mm]	H [mm]	H1 [mm]	H2 [mm]	H3 [mm]	H4 [mm]	L [mm]	L1 [mm]	L2 [mm]
63	EA-31	19	120.0	125.0	104	460	77	134	188	60	45	122	180
75	EA-31	19	139.7	145.0	115	473	83	140	188	60	46	122	180
90	EA-31	19	150.0	160.0	131	488	89	146	188	60	49	122	180
110	EA-31	19	175.0	190.5	161	520	104	167	188	60	56	122	180
140	EA-31	23	210.0	215.9	187	547	117	181	188	60	64	122	180
160	EA-31	24	241.3	241.3	215	568	130	189	188	60	72	122	180
225	EA-42	23	290.0	295.0	267	635	158	210	208	60	73	122	180



d [mm]	L3 [mm]	Q1 [mm]	Q2 [mm]
63	250	40	35
75	250	54	50
90	250	67	74
110	250	88	97
140	250	113	123
160	250	139	169
225	250	178	169

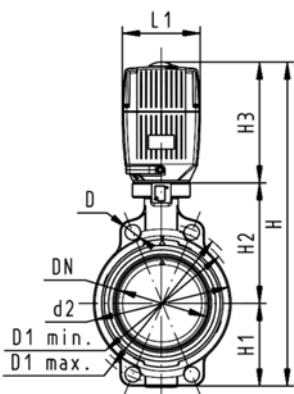


SYGEF Standard Butterfly valve type 140 100-230V Without manual override

Model:

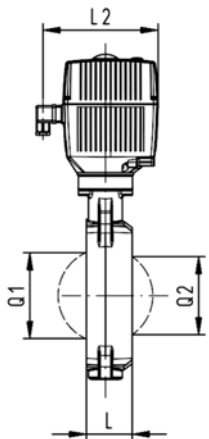
- Material: PVDF
- Connecting dimension: ISO 7005 PN 10, EN 1092 PN 10, DIN 2501 PN 10, ANSI/ASME B 16.5 Class 150, BS 1560: 1989, BS 4504, JIS B 2220
- Overall length according to EN 558, ISO 5752
- Voltage 100-230 V, 50-60 Hz
- Control time 15 s/90°<) EA31
- Control time 25s/90°<) EA42
- Control range 90°<)
- Actuator with integrated emergency manual override standard

Model with PTFE seal in DN250 and DN300 available from June 2009



d [mm]	DN [mm]	Inch	PN	kv-value (Δp=1 bar) [l/min]	FPM Code	PTFE Code
63	50	2	10	1470	199 140 582	199 140 642
75	65	2 ½	10	2200	199 140 583	199 140 643
90	80	3	10	3000	199 140 584	199 140 644
110	100	4	10	6500	199 140 585	199 140 645
140	125	5	10	11500	199 140 586	199 140 646
160	150	6	10	16600	199 140 587	199 140 647
225	200	8	10	39600	199 140 588	199 140 648
280	250	10	6	55200	199 140 589	199 140 649
315	300	12	4	80000	199 140 590	199 140 650

d [mm]	Actuator unit type	D [mm]	D1 min. [mm]	D1 max. [mm]	d2 [mm]	H [mm]	H1 [mm]	H2 [mm]	H3 [mm]	L [mm]	L1 [mm]	L2 [mm]	Q1 [mm]
63	EA-31	19	120.0	125.0	104	400	77	134	188	45	122	180	40
75	EA-31	19	139.7	145.0	115	413	83	140	188	46	122	180	54
90	EA-31	19	150.0	160.0	131	428	89	146	188	49	122	180	67
110	EA-31	19	175.0	190.5	161	460	104	167	188	56	122	180	88
140	EA-31	23	210.0	215.9	187	487	117	181	188	64	122	180	113
160	EA-31	24	241.3	241.3	215	508	130	189	188	72	122	180	139
225	EA-42	23	290.0	295.0	267	575	158	210	208	73	122	180	178
280	EA-42	25	353.0	362.0	329	677	205	264	208	113	122	180	210
315	EA-42	25	400.0	432.0	379	721	228	285	208	113	122	180	256



d [mm]	Q2 [mm]
63	
75	35
90	50
110	74
140	97
160	123
225	169
280	207
315	253

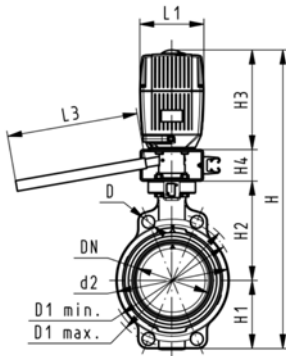


SYGEF Standard Butterfly valve type 140 100-230V With manual override

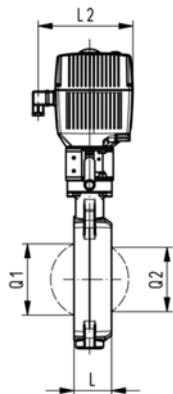
Model:

- Material: PVDF
- Connecting dimension: ISO 7005 PN 10, EN 1092 PN 10, DIN 2501 PN 10, ANSI/ASME B 16.5 Class 150, BS 1560: 1989, BS 4504, JIS B 2220
- Overall length according to EN 558, ISO 5752
- Voltage 100-230 V, 50-60 Hz
- Control time 15 s/90°<) EA31
- Control time 25s/90°<) EA42
- Control range 90°<)
- Actuator with integrated emergency manual override standard

d [mm]	DN [mm]	Inch	PN	kv-value ($\Delta p=1$ bar) [l/min]	FPM Code
63	50	2	10	1470	199 140 562
75	65	2 ½	10	2200	199 140 563
90	80	3	10	3000	199 140 564
110	100	4	10	6500	199 140 565
140	125	5	10	11500	199 140 566
160	150	6	10	16600	199 140 567
225	200	8	10	39600	199 140 568



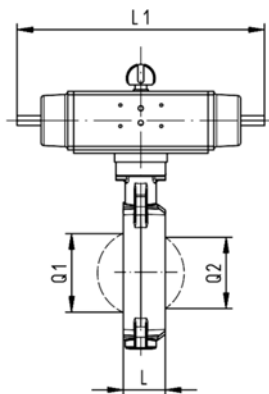
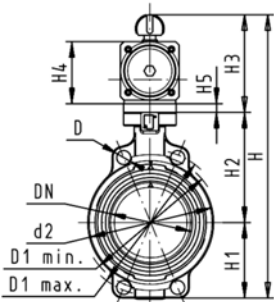
d [mm]	Actuator unit type	D [mm]	D1 min. [mm]	D1 max. [mm]	d2 [mm]	H [mm]	H1 [mm]	H2 [mm]	H3 [mm]	H4 [mm]	L [mm]	L1 [mm]	L2 [mm]
63	EA-31	19	120.0	125.0	104	460	77	134	188	60	45	122	180
75	EA-31	19	139.7	145.0	115	473	83	140	188	60	46	122	180
90	EA-31	19	150.0	160.0	131	488	89	146	188	60	49	122	180
110	EA-31	19	175.0	190.5	161	520	104	167	188	60	56	122	180
140	EA-31	23	210.0	215.9	187	547	117	181	188	60	64	122	180
160	EA-31	24	241.3	241.3	215	568	130	189	188	60	72	122	180
225	EA-42	23	290.0	295.0	267	635	158	210	208	60	73	122	180



d [mm]	L3 [mm]	Q1 [mm]	Q2 [mm]
63	250	40	
75	250	54	35
90	250	67	50
110	250	88	74
140	250	113	97
160	250	139	123
225	250	178	169

Butterfly valves pneumatic SYGEF®

SYGEF® standard Butterfly valve type 240 Function FC (Fail safe to close) Without manual override



Model:

- Material: PVDF
- Connecting dimension: ISO 7005 PN 10, EN 1092 PN 10, DIN 2501 PN 10, ANSI/ASME B 16.5 Class 150, BS 1560: 1989, BS 4504, JIS B 2220
- Overall length according to EN 558, ISO 5752
- Control range 90°<

Model with PTFE seal in DN250 and DN300 available from June 2009

d [mm]	DN [mm]	Inch	PN	kv-value ($\Delta p=1$ bar) [l/min]	FPM Code	PTFE Code
63	50	2	10	1470	199 240 462	199 240 522
75	65	2 ½	10	2200	199 240 463	199 240 523
90	80	3	10	3000	199 240 464	199 240 524
110	100	4	10	6500	199 240 465	199 240 525
140	125	5	10	11500	199 240 466	199 240 526
160	150	6	10	16600	199 240 467	199 240 527
225	200	8	10	39600	199 240 468	199 240 528
280	250	10	10	55200	199 240 469	199 240 529
315	300	12	10	80000	199 240 470	199 240 530

d [mm]	Actuator unit type	D [mm]	D1 min. [mm]	D1 max. [mm]	d2 [mm]	H [mm]	H1 [mm]	H2 [mm]	H3 [mm]	H4 [mm]	H5 [mm]	L [mm]	L1 [mm]
63	PA-30 FC	19	120.0	125.0	104	327	77	134	117	70	15	45	276
75	PA-30 FC	19	139.7	145.0	115	340	83	140	117	70	15	46	276
90	PA-35 FC	19	150.0	160.0	131	361	89	146	126	78	15	49	326
110	PA-40 FC	19	175.0	190.5	161	400	104	167	129	86		56	370
140	PA-45 FC	23	210.0	215.9	187	436	117	181	139	96		64	411
160	PA-50 FC	24	241.3	241.3	215	468	130	189	149	106		72	423
225	PA-55 FC	23	290.0	295.0	267	529	158	210	161	118		73	452
280	PA-65 FC	25	353.0	362.0	329	808	205	264	191	148		113	648
315	PA-70 FC	25	400.0	432.0	379	866	228	285	196	157		113	663

d [mm]	L2 [mm]	Q1 [mm]	Q2 [mm]
63	65	40	
75	65	54	35
90	72	67	50
110	80	88	74
140	90	113	97
160	100	139	123
225	112	178	169
280	137	210	207
315	145	256	253

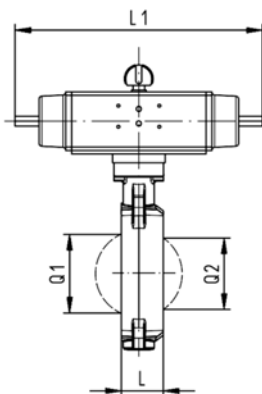
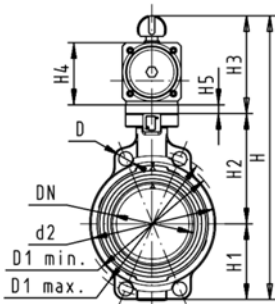


SYGEF® standard Butterfly valve type 240 Function FO (Fail safe to open) Without manual override

Model:

- Material: PVDF
- Connecting dimension: ISO 7005 PN 10, EN 1092 PN 10, DIN 2501 PN 10, ANSI/ASME B 16.5 Class 150, BS 1560: 1989, BS 4504, JIS B 2220
- Overall length according to EN 558, ISO 5752
- Control range 90°<

Model with PTFE seal in DN250 and DN300 available from June 2009



d [mm]	DN [mm]	Inch	PN	kv-value ($\Delta p=1$ bar) [l/min]	FPM Code	PTFE Code
63	50	2	10	1470	199 240 482	199 240 542
75	65	2 ½	10	2200	199 240 483	199 240 543
90	80	3	10	3000	199 240 484	199 240 544
110	100	4	10	6500	199 240 485	199 240 545
140	125	5	10	11500	199 240 486	199 240 546
160	150	6	10	16600	199 240 487	199 240 547
225	200	8	10	39600	199 240 488	199 240 548
280	250	10	10	55200	199 240 489	199 240 549
315	300	12	10	80000	199 240 490	199 240 550

d [mm]	Actuator unit type	D [mm]	D1 min. [mm]	D1 max. [mm]	d2 [mm]	H [mm]	H1 [mm]	H2 [mm]	H3 [mm]	H4 [mm]	H5 [mm]	L [mm]	L1 [mm]
63	PA-30 FO	19	120.0	125.0	104	327	77	134	117	70	15	45	276
75	PA-30 FO	19	139.7	145.0	115	340	83	140	117	70	15	46	276
90	PA-35 FO	19	150.0	160.0	131	361	89	146	126	78	15	49	326
110	PA-40 FO	19	175.0	190.5	161	400	104	167	129	86		56	370
140	PA-45 FO	23	210.0	215.9	187	436	117	181	139	96		64	411
160	PA-50 FO	24	241.3	241.3	215	468	130	189	149	106		72	423
225	PA-55 FO	23	290.0	295.0	267	529	158	210	161	118		73	452
280	PA-65 FO	25	353.0	362.0	329	808	205	264	191	148		113	648
315	PA-70 FO	25	400.0	432.0	379	866	228	285	196	157		113	663

d [mm]	L2 [mm]	Q1 [mm]	Q2 [mm]
63	65	40	
75	65	54	35
90	72	67	50
110	80	88	74
140	90	113	97
160	100	139	123
225	112	178	169
280	137	210	207
315	145	256	253

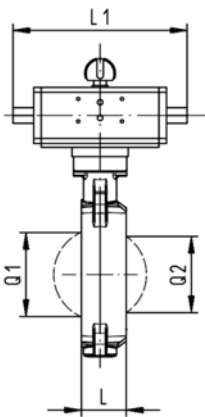
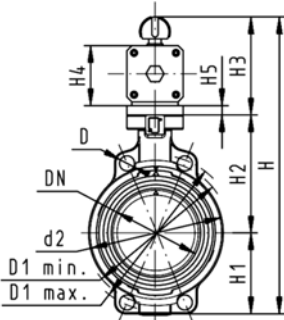


SYGEF Standard Butterfly valve type 240 DA (Double acting) Without manual override

Model:

- Material: PVDF
- Connecting dimension: ISO 7005 PN 10, EN 1092 PN 10, DIN 2501 PN 10, ANSI/ASME B 16.5 Class 150, BS 1560: 1989, BS 4504, JIS B 2220
- Overall length according to EN 558, ISO 5752
- Control range 90°<

Model with PTFE seal in DN250 and DN300 available from June 2009



d [mm]	DN [mm]	Inch	PN	kv-value ($\Delta p=1$ bar) [l/min]	FPM Code	PTFE Code
63	50	2	10	1470	199 240 502	199 240 562
75	65	2 ½	10	2200	199 240 503	199 240 563
90	80	3	10	3000	199 240 504	199 240 564
110	100	4	10	6500	199 240 505	199 240 565
140	125	5	10	11500	199 240 506	199 240 566
160	150	6	10	16600	199 240 507	199 240 567
225	200	8	10	39600	199 240 508	199 240 568
280	250	10	10	55200	199 240 509	199 240 569
315	300	12	10	80000	199 240 510	199 240 570

d [mm]	Actuator unit type	D [mm]	D1 min. [mm]	D1 max. [mm]	d2 [mm]	H [mm]	H1 [mm]	H2 [mm]	H3 [mm]	H4 [mm]	H5 [mm]	L [mm]	L1 [mm]
63	PA-35 DA	19	120.0	125.0	104	317	77	134	107	60	15	45	177
75	PA-35 DA	19	139.7	145.0	115	330	83	140	107	60	15	46	177
90	PA-40 DA	19	150.0	160.0	131	348	89	146	113	66	15	49	190
110	PA-45 DA	19	175.0	190.5	161	372	104	167	102	71		56	235
140	PA-45 DA	23	210.0	215.9	187	408	117	181	111	78		64	235
160	PA-55 DA	24	241.3	241.3	215	448	130	189	129	86		72	279
225	PA-55 DA	23	290.0	295.0	267	507	158	210	139	96		73	279
280	PA-65 DA	25	353.0	362.0	329	748	205	264	161	118		113	350
315	PA-70 DA	25	400.0	432.0	379	816	228	285	173	130		113	381

d [mm]	L2 [mm]	Q1 [mm]	Q2 [mm]
63	55	40	
75	55	54	35
90	60	67	50
110	65	88	74
140	72	113	97
160	80	139	123
225	90	178	169
280	112	210	207
315	125	256	253

Assembly parts for butterfly valves

Intermediate element

Pneumatic type 240 / 241 / 242

Without manual override

d [mm]	DN [mm]	Type of actuator	Code	
63	50	PA30 FC/FO	198 000 595	
63	50	PA35 DA	198 000 595	
75	65	PA30 FC/FO	198 000 595	
75	65	PA35 DA	198 000 595	
90	80	PA40 DA	198 000 595	
90	80	PA35 FC/FO	198 000 596	
110	100	PA40 FC/FO	198 000 600	
110	100	PA45 DA	198 000 600	
140	125	PA45 DA	198 000 600	
140	125	PA45 FC/FO	198 000 597	
160	150	PA55 DA	198 000 600	
160	150	PA50 FC	198 000 599	
225	200	PA55 FC/FO	198 000 598	
225	200	PA55 DA	198 000 600	
280	250	FA65 FC/FO	198 000 730	
280	250	PA65 DA	198 000 731	
315	300	PA70 FC/FO	198 000 730	
315	300	PA70 DA	198 000 731	

Electric type 140 / 141 / 142

Without manual override

d [mm]	DN [mm]	Type of actuator	Code	
63	50	EA31	198 000 601	
75	65	EA31	198 000 601	
90	80	EA31	198 000 601	
110	100	EA31	198 000 602	
140	125	EA31	198 000 602	
160	150	EA31	198 000 599	
225	200	EA42	198 000 603	
280	250	EA42	198 000 732	
315	300	EA42	198 000 732	

Intermediate element

Electric type 140 / 141 / 142 With manual override

d-d [mm]	DN-DN [mm]	Type of actuator	Code
63 - 90	50 - 80	EA31	198 000 623
110 - 140	100 - 125	EA31	198 000 624
- 160	- 150	EA31	198 000 625
- 225	- 200	EA42	198 000 627

Gear operated with handwheel 567 / 568

d [mm]	DN [mm]	Code
63	50	198 000 621
75	65	198 000 621
90	80	198 000 621
110	100	198 000 622
140	125	198 000 622
160	150	198 000 599
225	200	198 000 599
280	250	198 000 732
315	300	198 000 732



Hand lever with fine adjustment to type 567/568

Size	DN-DN [mm]	Code	
1	50 - 80	161 486 325	
2	100 - 125	161 486 326	
2	- 150	161 486 327	
3	- 200	161 486 328	

Reduction gear with handwheel



d [mm]	Inch	DN [mm]	Code	
75	2 ½	65	161 482 408	
90	3	80	161 482 408	
110	4	100	161 482 408	
125	4 ½	125	161 482 408	
160	6	150	161 482 408	
225	8	200	161 482 408	
280	10	250	161 483 462	
315	12	300	161 483 462	



Electric actuator type EA31

Note:

- F07 (WS 17) per EN ISO 5211

Voltage	Code	
100-230 V~	198 150 184	
24 V= / ~	198 150 185	



Electric actuator type EA42

Note:

- F07 (WS 22) per EN ISO 5211

Voltage	Code	
100-230 V~	198 150 186	
24 V= / ~	198 150 187	



Pneumatic actuator type PA30 PA90 Fail safe to close/fail safe to open (FC/FO)

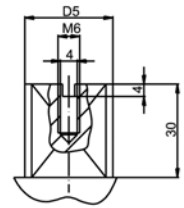
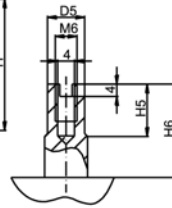
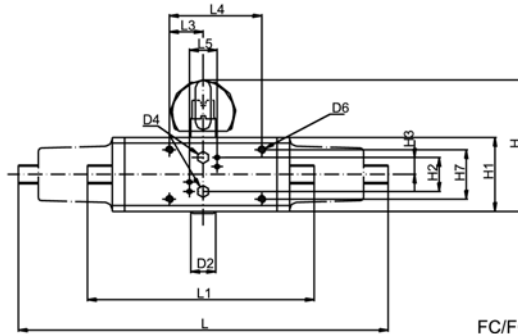
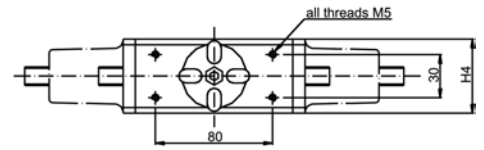
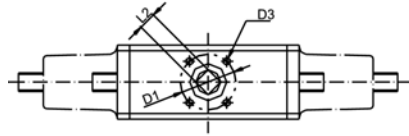
* Only valid for butterfly valve type 240, 241, 242 and ball valve type 230 - 235

Type	hard anodized Code	nickel plated Code	hard anodized with stroke limiter Code
PA 30 FC/FO	198 800 757	198 800 034	
* PA 30 FO	198 811 025		
PA 35 FC/FO	198 800 037	198 800 052	
* PA 35 FO	198 811 026		
PA 40 FC/FO	198 800 728	198 800 004	198 800 017
* PA 40 FO	198 811 027		
PA 45 FC/FO	198 800 039	198 800 054	-
* PA45 FO	198 811 028		
PA 50 FC/FO	198 800 729	198 800 005	198 800 018
* PA50 FO	198 811 029		
PA 55 FC/FO	198 800 041	198 800 056	-
* PA 55 FO	198 811 030		
PA 60 FC/FO	198 800 730	198 800 006	198 800 019
PA 65 FC/FO	198 800 043	198 800 058	-
PA 70 FC/FO	198 800 731	198 800 007	198 800 020
PA 70 FO	198 811 198		
PA 75 FC/FO	198 800 045	198 800 060	-
PA 80 FC/FO	198 800 047	198 800 062	-

Type		D1 [mm]	D2 [mm]	D3[M] [mm]	D4 [inch]	D5 [mm]	L [mm]	L2 [mm]	L3 [mm]	L4 [mm]	L5 [mm]	H [mm]	H1 [mm]
PA 30 FC/FO	F04	42	30	M5x9	1/8	10	276	11	35	70	32	102	70
* PA 30 FO	F04	42	30	M5x9	1/8	10	276	11	35	70	32	102	70
PA 35 FC/FO	F05	50	35	M6x11	1/8	12	326	14	35	70	32	111	78
* PA 35 FO	F05	50	35	M6x11	1/8	12	326	14	35	70	32	111	78
PA 40 FC/FO	F05	50	35	M6x11	1/8	12	370	14	35	70	32	129	86
* PA 40 FO	F05	50	35	M6x11	1/8	12	370	14	35	70	32	129	86
PA 45 FC/FO	F07	70	55	M8x15	1/8	15	411	17	35	70	32	139	96
* PA45 FO	F07	70	55	M8x15	1/8	15	411	17	35	70	32	139	96
PA 50 FC/FO	F07	70	55	M8x15	1/8	15	423	17	35	70	32	149	106
* PA50 FO	F07	70	55	M8x15	1/8	15	423	17	35	70	32	149	106
PA 55 FC/FO	F10	102	70	M10x17	1/8	19	452	22	35	70	32	161	118
* PA 55 FO	F10	102	70	M10x17	1/8	19	452	22	35	70	32	161	118
PA 60 FC/FO	F10	102	70	M10x17	1/8	19	503	22	35	70	32	173	130
PA 65 FC/FO	F12	125	85	M12x21	1/4		648	27			32	191	148
PA 70 FC/FO	F12	125	85	M12x21	1/4		663	27			32	196	153
PA 70 FO	F12	125	85	M12x21	1/4		663	27			32	196	153
PA 75 FC/FO	F14	140	100	M16x25	1/4		824	36			32	229	186
PA 80 FC/FO	F14	140	100	M16x25	1/4		918	36			32	241	198

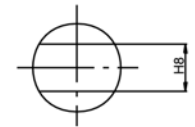
Type	H2 [mm]	H3 [mm]	H4 [mm]	H5 [mm]	H6 [mm]	H7 [mm]	H8 [mm]
PA 30 FC/FO	21	18	65	13	20	36	
* PA 30 FO	21	18	65	13	20	36	
PA 35 FC/FO	21	18	72	13	20	36	
* PA 35 FO	21	18	72	13	20	36	
PA 40 FC/FO	25	21	80	13	30	36	
* PA 40 FO	25	21	80	13	30	36	
PA 45 FC/FO	25	21	90	16	30	36	
* PA45 FO	25	21	90	16	30	36	
PA 50 FC/FO	25	26	100	17	30	36	
* PA50 FO	25	26	100	17	30	36	
PA 55 FC/FO	25	25	112	19	30	36	
* PA 55 FO	25	25	112	19	30	36	
PA 60 FC/FO	25	32	124	19	30	36	
PA 65 FC/FO	24	34	137				22

Type	H2 [mm]	H3 [mm]	H4 [mm]	H5 [mm]	H6 [mm]	H7 [mm]	H8 [mm]
PA 70 FC/FO	24	38	145				24
PA 70 FO	24	38	145				24
PA 75 FC/FO	24	43	166				27
PA 80 FC/FO	24	44	180				32



FC/FO: PA 30/35/40/45
PA 50/55/60

DA: PA 30/35/40/45
PA 50/55/60/65/70



FC/FO: PA 65/70/75/80
DA: PA 75/80/85/90



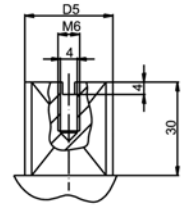
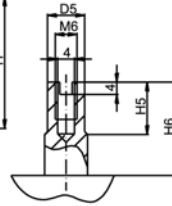
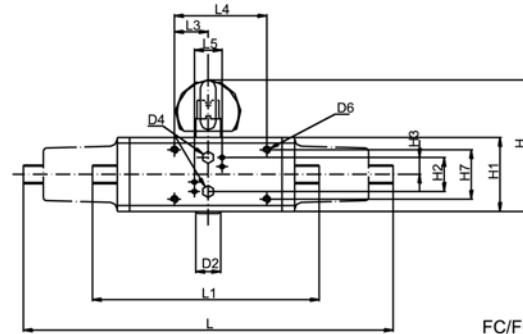
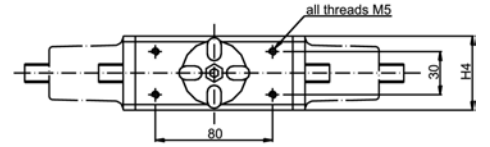
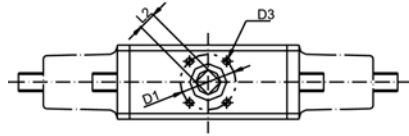
Pneumatic actuator type PA30 PA90 Double acting (DA)

Type	hard anodized Code
PA 30 DA	198 800 737
PA 35 DA	198 800 758
PA 40 DA	198 800 759
PA 45 DA	198 800 040
PA 50 DA	198 800 733
PA 55 DA	198 800 042
PA 60 DA	198 800 734
PA 65 DA	198 800 044
PA 70 DA	198 800 735
PA 75 DA	198 800 046
PA 80 DA	198 800 048
PA 85 DA	198 800 050
PA 90 DA	198 800 051

Type		D1 [mm]	D2 [mm]	D3[M] [mm]	D4 [inch]	D5 [mm]	L1 [mm]	L2 [mm]	L3 [mm]	L4 [mm]	L5 [mm]	H [mm]	H1 [mm]	H2 [mm]
PA 30 DA	F03	36	25	M5x9	1/8	9	177	9	35	70		92	60	25
PA 35 DA	F03	42	30	M5x9	1/8	10	190	11	35	70		98	66	25
PA 40 DA	F05	42	30	M5x9	1/8	10	198	11	35	70		102	70	21
PA 45 DA	F05	50	35	M6x11	1/8	12	235	14	35	70		111	78	21
PA 50 DA	F05	50	35	M6x11	1/8	12	250	14	35	70		129	86	25
PA 55 DA	F07	70	55	M8x15	1/8	15	279	17	35	70		139	96	25
PA 60 DA	F07	70	55	M8x15	1/8	15	341	17	35	70		149	106	25
PA 65 DA	F10	102	70	M10x17	1/8	19	350	22	35	70		161	118	25
PA 70 DA	F10	102	70	M10x17	1/8	19	381	22	35	70		173	130	25
PA 75 DA	F12	125	85	M12x21	1/4		416	27			32	191	148	24
PA 80 DA	F12	125	85	M12x21	1/4		466	27			32	197	153	24
PA 85 DA	F14	140	100	M16x25	1/4		555	36			32	229	186	24
PA 90 DA	F14	140	100	M16x25	1/4		581	36			32	241	198	24

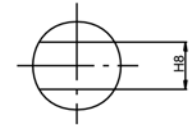
Type	H3 [mm]	H4 [mm]	H5 [mm]	H6 [mm]	H7 [mm]	H8 [mm]
PA 30 DA	12	55	10	20	36	
PA 35 DA	13	60	13	20	36	
PA 40 DA	18	65	13	20	36	
PA 45 DA	18	72	13	20	36	
PA 50 DA	21	80	13	30	36	
PA 55 DA	21	90	16	30	36	
PA 60 DA	26	100	17	30	36	
PA 65 DA	25	112	19	30	36	
PA 70 DA	32	124	19	30	36	

Type	H3 [mm]	H4 [mm]	H5 [mm]	H6 [mm]	H7 [mm]	H8 [mm]
PA 75 DA	34	137				22
PA 80 DA	38	145				24
PA 85 DA	43	166				27
PA 90 DA	44	180				32



FC/FO: PA 30/35/40/45
PA 50/55/60

DA: PA 30/35/40/45
PA 50/55/60/65/70

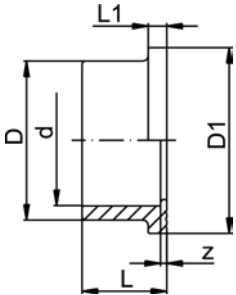


FC/FO: PA 65/70/75/80
DA: PA 75/80/85/90

Flange Adaptor

Flange Adaptor, PVC-U

Combined Jointing face flat and serrated, metric



Model:

- Solvent cement socket metric
- d16 - d50: Jointing face flat
- d63 - d400: Combined Jointing face flat and serrated
- Gasket: Profile flange gasket EPDM No. 48 44 07, FPM No. 49 44 07 or Flat gasket EPDM No. 48 40 03
Only use O-ring EPDM No. 48 41 01, FPM No. 49 41 01 in combination with counterpart Flange Adaptor No. 21 81 01
- Flange: PVC-U No. 21 70 00, PP with steel ring No. 27 70 02, Backing Flange PP-V for socket systems metric No. 27 70 04

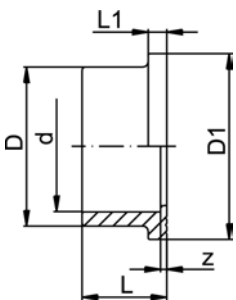
Note: The flat gasket affects the maximum allowable operating pressure!

d [mm]	d [inch]	DN [mm]	PN	Code	z [mm]	D [mm]	D1 [mm]	L [mm]	L1 [mm]
63		50	16	721 790 111	3	77	90	41	9
75	2 ½	65	16	721 790 112	3	91	106	47	10
90		80	16	721 790 113	5	108	125	56	11
110		100	16	721 790 114	5	131	150	66	12
140	5	125	16	721 790 116	5	165	188	81	14
160		150	16	721 790 117	5	188	213	91	16
225		200	10	721 790 120	6	248	274	125	25
280		250	10	721 790 122	5	308	329	151	23
315		300	6	721 790 123	8	346	379	172	27

PVC-C

Flange adaptor PVC-C

Jointing face flat / serrated metric



Model:

- Solvent cement socket metric

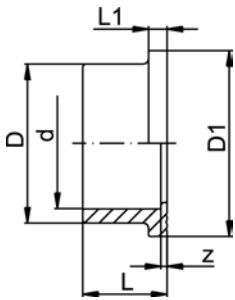
d [mm]	DN [mm]	PN	Code	z [mm]	D [mm]	D1 [mm]	L [mm]	L1 [mm]
63	50	16	723 790 111	3	76	90	41	9
75	65	16	723 790 112	3	91	106	47	10
90	80	16	723 790 113	5	108	125	56	11
110	100	16	723 790 114	5	131	150	66	12
160	150	16	723 790 117	5	188	213	91	16
225	200	10	723 790 120	6	248	274	125	25



ABS Flange adaptor ABS metric Jointing face flat / serrated metric

Model:

- Solvent cement socket metric



d [mm]	DN [mm]	PN	Code	D [mm]	D1 [mm]	L [mm]	L1 [mm]	z [mm]
63	50	10	729 790 111	76	90	41	9	3
75	65	10	729 790 112	91	106	47	10	3
90	80	10	729 790 113	108	125	56	11	5
110	100	10	729 790 114	131	150	66	12	5
140	125	10	729 790 116	165	188	81	14	5
160	150	10	729 790 117	188	213	91	16	5
225	200	10	729 790 120	248	274	125	25	6

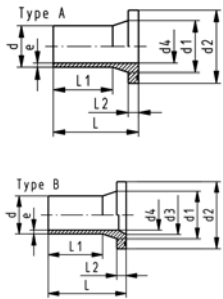


Flange Adaptor LS, PE100 SDR11 Combined Jointing Face: Flat and serrated

Model:

- For butt-, IR Plus® and electrofusion
- Suitable for flange connections to metric (**from d110 also to ANSI/ASME B16.5**)
- Up to d315, suitable for butterfly valve type 567,568 and 037
- Gasket: Profile flange gasket NBR No. 45 44 07, EPDM No. 48 44 07
- 10 bar Gas / 16 bar Water

* Type B with chamfer



d [mm]	DN [mm]	FM	Code	d1 [mm]	d2 [mm]	d3 [mm]	d4 [mm]	L [mm]	L1 [mm]	L2 [mm]	e [mm]
63	50	IR	753 800 011	75	102		51	98	69	14	5.8
* 75	65	IR	753 800 012	89	122	66	61	125	89	16	6.8
* 90	80	IR	753 800 013	105	138	78	73	140	103	17	8.2
* 110	100	IR	753 800 014	125	158	100	90	160	114	18	10.0
* 140	125	IR	753 800 016	155	188	127	114	200	147	25	12.7
* 160	150	IR	753 800 017	175	212	151	130	200	147	25	14.6
* 225	200	IR	753 800 020	235	268	210	184	200	138	32	20.5
* 280	250		753 800 022	291	320	265	229	231	144	35	25.4
* 315	300		753 800 023	335	370	300	257	239	158	35	28.6

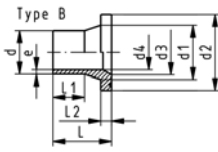
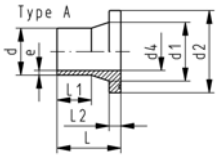


Flange Adaptor, PE100 S5/SDR11 Jointing Face, combination serrated / flat metric

Model:

- Conventional butt-welding according to DVS 2207 part 1
- Up to d315, suitable for most common butterfly valves incl. type 567, 568 and 037
- For butterfly valves \geq DN350, please choose flange adaptor no. 53 79 88
- Gasket: Profile flange gasket NBR No. 45 44 07, EPDM No. 48 44 07
- 10 bar Gas / 16 bar Water

* Type B with chamfer



d [mm]	DN [mm]	Code	d1 [mm]	d2 [mm]	d3 [mm]	d4 [mm]	L [mm]	L1 [mm]	L2 [mm]	e [mm]
* 280	250	753 798 827	291	320	265	229	119	69	35	25,4
* 315	300	753 798 828	335	370	300	257	166	88	35	28,6

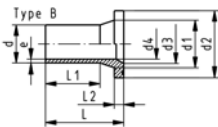
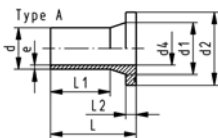


Flange Adaptor LS, PE100 SDR17/17.6 Combined Jointing Face: Flat and serrated

Model:

- For butt-, IR Plus® and electrofusion
- Suitable for flange connections to metric (from d110 also to ANSI/ASME B16.5)
- Up to d315, suitable for butterfly valve type 567, 568 and 037
- Gasket: Profile flange gasket NBR No. 45 44 07, EPDM No. 48 44 07
- 5 bar Gas / 10 bar Water

* Type B with chamfer



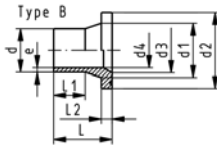
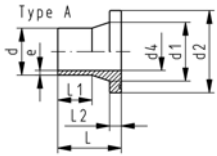
d [mm]	DN [mm]	FM	Code	d1 [mm]	d2 [mm]	d3 [mm]	d4 [mm]	L [mm]	L1 [mm]	L2 [mm]	e [mm]
63	50		753 800 086	75	102		55	120	65	14	3.8
75	65		753 800 087	89	122		66	130	75	16	4.5
90	80		753 800 088	105	138		79	140	103	17	5.4
110	100	IR	753 800 089	125	158		96	160	117	18	6.6
* 140	125	IR	753 800 091	155	188	127	123	200	147	25	8.3
* 160	150	IR	753 800 092	175	212	158	141	200	147	25	9.5
* 225	200	IR	753 800 095	235	268	210	198	200	138	32	13.4
* 280	250		753 800 097	291	320	265	246	230	154	25	16.6
* 315	300		753 800 098	335	370	300	277	242	166	25	18.7

Flange Adaptor, PE100 S8,3/SDR 17/17.6 Jointing Face, combination serrated / flat metric

Model:

- Conventional butt-welding according to DVS 2207 part 1
- Up to d315, suitable for most common butterfly valves incl. type 567, 568 and 037
- For butterfly valves \geq DN350, please choose flange adaptor no. 53 79 88
- Gasket: Profile flange gasket NBR No. 45 44 07, EPDM No. 48 44 07
- 5 bar Gas / 10 bar Water

* Type B with chamfer



d [mm]	DN [mm]	Code	d1 [mm]	d2 [mm]	d3 [mm]	d4 [mm]	L [mm]	L1 [mm]	L2 [mm]	e [mm]
* 280	250	753 798 852	291	320	265	246	119	69	25	16,6
* 315	300	753 798 853	335	370	300	277	164	86	25	18,7



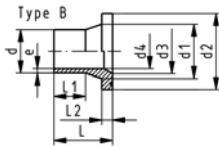
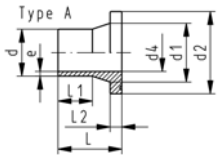
PROGEF Standard, Flange Adaptor, S5/SDR11

Combined Jointing Face: Flat and Serrated

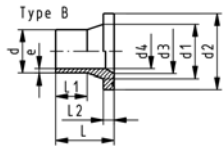
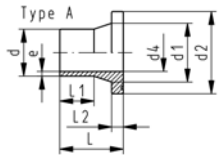
Model:

- Material: PP-H
- Conventional butt-welding according to DVS 2207 part 11
- IR = Infrared-(IR Plus®) compatible. Please choose fusion parameters: PP-H
- Suitable for flange connections to metric (**from d110 also to ANSI/ASME B16.5**)
- Up to d315, suitable for butterfly valve type 567,568 and 037
- Gasket: Profile flange gasket EPDM No. 48 44 07, FPM No. 49 44 07

* Type B with chamfer



d [mm]	DN [mm]	FM	Code	d1 [mm]	d2 [mm]	d3 [mm]	d4 [mm]	L [mm]	L1 [mm]	L2 [mm]	e [mm]
63	50	IR	727 798 711	75	102		51	68	38	14	5.8
* 75	65	IR	727 798 712	89	122	66	61	80	43	16	6.9
* 90	80	IR	727 798 713	105	138	78	73	80	41	17	8.2
* 110	100	IR	727 798 714	125	158	100	90	80	40	18	10.0
* 140	125	IR	727 798 716	155	188	127	114	89	39	25	12.8
* 160	150	IR	727 798 717	175	212	151	131	92	45	25	14.6
* 225	200	IR	727 798 720	235	268	210	184	100	35	32	20.5
* 280	250		727 798 722	291	320	265	229	100	35	35	25.4
* 315	300		727 798 723	335	370	300	257	100	35	35	28.6



PROGEF Standard, Flange Adaptor, S8.3/SDR17.6 Combined Jointing Face: Flat and Serrated

Model:

- Material: PP-H
- Conventional butt-welding according to DVS 2207 part 11
- IR = Infrared-(IR Plus®) compatible. Please choose fusion parameters: PP-H
- Suitable for flange connections to metric (**from d110 also to ANSI/ASME B16.5**)
- Up to d315, suitable for butterfly valve type 567,568 and 037
- Gasket: Profile flange gasket EPDM No. 48 44 07, FPM No. 49 44 07

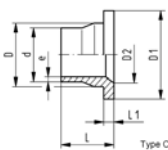
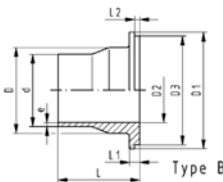
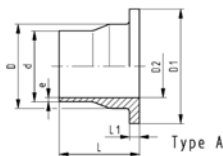
* Type B with chamfer

d [mm]	DN [mm]	FM	Code	d1 [mm]	d2 [mm]	d3 [mm]	d4 [mm]	L [mm]	L1 [mm]	L2 [mm]	e [mm]
63	50	IR	727 798 786	75	102		53	50	16	14	3.8
75	65	IR	727 798 787	89	122		65	80	43	16	4.5
90	80	IR	727 798 788	105	138		78	80	41	17	5.4
110	100	IR	727 798 789	125	158		96	80	40	18	6.6
* 140	125	IR	727 798 791	155	188	127	120	80	34	18	8.3
* 160	150	IR	727 798 792	175	212	158	142	92	45	25	9.1
* 225	200	IR	727 798 795	235	268	210	199	100	35	32	12.8
* 280	250		727 798 797	291	320	265	243	100	45	25	16.6
* 315	300		727 798 798	335	370	300	274	100	35	25	18.7

SYGEF® standard Flange adaptor PVDF Jointing face flat / serrated

Model:

- In connection with +GF+ butterfly valves, chamfered and ready for use



d [mm]	DN [mm]	PN	Code	D [mm]	D1 [mm]	D2 [mm]	D3 [mm]	e [mm]	L [mm]	L1 [mm]	L2 [mm]	Type
63	50	16	735 798 811	75	102	56		3.0	72	9		A
75	65	16	735 798 812	89	122	66		3.6	80	10		A
90	80	16	735 798 813	105	138	78	133	4.3	81	12	4	B
110	100	16	735 798 814	125	158	100		5.3	81	13		C
140	125	16	735 798 816	155	188	127		6.7	90	16		C
160	150	16	735 798 817	175	212	151		7.7	93	17		C
225	200	16	735 798 820	235	268	207		10.8	102	22		C

Flange

Backing Flange, PVC-U metric



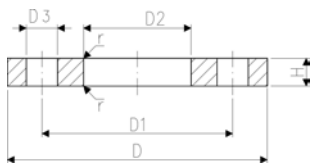
Model:

- For socket systems
- Connecting dimension: ISO 7005, EN 1092, BS 4504, DIN 2501
- Maximum medium- or ambient temperature 45 °C
- **Bolt circle PN 10**

¹ Connecting dimension: ISO 2536, bolt circle acc. DN125, suitable for flange adaptor d125/DN100

² Connecting dimension: ISO 2536, bolt circle acc. DN225, suitable for flange adaptor d250/DN250

AL: number of holes



d [mm]	DN [mm]	Inch	PN	Code	D [mm]	D1 [mm]	D2 [mm]	D3 [mm]	H [mm]	r [mm]	AL	SC
63	50	2	10	721 700 011	165	125	78	18	18	3	4	M16
75	65	2 ½	10	721 700 012	185	145	92	18	19	3	4	M16
90	80	3	10	721 700 013	200	160	110	18	20	3	8	M16
110	100	4	10	721 700 014	220	180	133	18	22	3	8	M16
140	125	5	10	721 700 016	250	210	167	18	26	4	8	M16
160	150	6	10	721 700 017	285	240	190	22	28	4	8	M20
225	200	8	10	721 700 020	340	295	250	22	32	4	8	M20
280	250	10	6	721 700 137	395	350	310	22	36	4	12	M20
315	300	12	6	721 700 138	445	400	348	22	36	4	12	M20

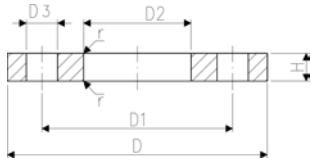
Backing flange PVC-U Inch ASTM / ANSI



Model:

- For socket systems
- For Flange Adaptors BS/ANSI
- Connecting dimension: ANSI/ASME B 16.5 class 150, ASTM D 4024, BS 1560, BS EN 1759

* Only for use with metric flange adaptors



d [mm]	DN [mm]	Inch	PN	Code	D [mm]	D1 [mm]	D2 [mm]	D3 [mm]	H [mm]	r [mm]	AL
* 110	50	2	10	721 702 211	165	121	78	19	18	3	4
	65	2 ½	10	721 702 212	185	140	92	19	19	3	4
	80	3	10	721 702 213	200	152	110	19	20	3	4
	100	4	10	721 702 214	220	190	138	19	22	3	8
	100	4	10	161 483 180	220	190	133	19	22	3	8
	125	5	10	721 702 216	250	216	167	22	26	4	8
	150	6	10	721 702 217	285	241	200	22	28	4	8
	200	8	10	721 702 220	340	298	250	22	32	4	8



Backing Flange, PP/Steel for Socket Systems metric

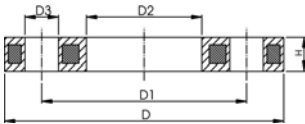
Model:

- PP-GF (30% glass-fibre reinforced) with steel ring
- Connecting dimension: ISO 7005, EN 1092, BS 4504, DIN 2501
- **Bolt circle PN 10**

¹ Connecting dimension: ISO 2536, bolt circle acc. DN125, suitable for flange adaptor d125/DN100

² Connecting dimension: ISO 2536, bolt circle acc. DN225, suitable for flange adaptor d250/DN250

AL: number of holes



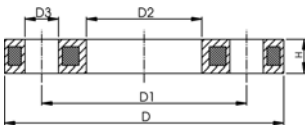
d [mm]	d [inch]	DN [mm]	PN	Code	D [mm]	D1 [mm]	D2 [mm]	D3 [mm]	H [mm]	AL	SC
63		50	16	727 700 211	165	125	78	18	20	4	M16
75		65	16	727 700 212	185	145	92	18	20	4	M16
90		80	16	727 700 213	200	160	110	18	20	8	M16
110		100	16	727 700 214	220	180	133	18	20	8	M16
140		125	16	727 700 216	250	210	167	18	24	8	M16
160	6	150	16	727 700 217	285	240	190	22	24	8	M20
225		200	16	727 700 220	340	295	250	22	27	8	M20
280		250	16	727 700 222	395	350	310	22	30	12	M20
315		300	16	727 700 223	445	400	348	22	34	12	M20



Backing flange PP/Steel For socket systems Inch/ASTM

Model:

- For socket systems
- For Flange Adaptors BS/ANSI
- Material: PP (30 % glass-fibre reinforced) with steel ring
- Connecting dimension ANSI/ASME B 16.5 / ASTM D 4024
- DN100 and DN150: only for use with original metric flange adaptors



d [mm]	DN [mm]	Inch	PN	Code	D [mm]	D1 [mm]	D2 [mm]	D3 [mm]	H [mm]	AL
63	50		16	727 701 211	165				18	4
75	65		16	727 701 212	185				18	4
90	80		16	727 701 213	200				20	4
110	100		16	727 701 214	229				20	8
200	200		16	727 701 220	340				27	8

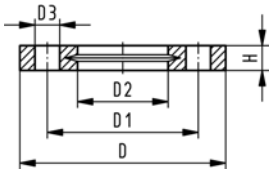


Backing Flanges, PP-V for Butt Fusion Systems metric

Model:

- Modern full-plastic flange PP-GF (30 % glass-fibre reinforced)
- With V-groove which applies force evenly on collar
- With integrated bolt retainers as an assembly aid
- Connecting dimension: ISO 7005, EN 1092, BS 4504, DIN 2501
- **Bolt circle PN 10**

¹⁾ Suitable for socket- and butt fusion systems (no pictograph on flange)
AL: number of holes



d [mm]	Inch	DN [mm]	PN	Code	D [mm]	D1 [mm]	D2 [mm]	D3 [mm]	H [mm]	AL	SC
163		50	16	727 700 411	165	125	78	18	24	4	M16
175		65	16	727 700 412	185	145	92	18	26	4	M16
90		80	16	727 700 513	200	160	108	18	27	8	M16
125		100	16	727 700 515	220	180	135	18	28	8	M16
140		125	16	727 700 516	250	210	158	18	30	8	M16
160	6	150	16	727 700 517	285	241	178	22	32	8	M20
225	9	200	16	727 700 520	340	295	238	22	34	8	M20
280		250	16	727 700 522	395	350	294	22	38	12	M20
315		300	16	727 700 523	445	400	338	22	42	12	M20

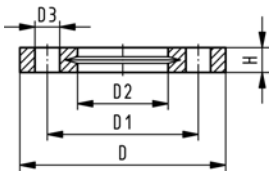


Backing Flanges, PP-V for Socket Systems metric

Model:

- Modern full-plastic flange PP-GF (30 % glass-fibre reinforced)
- With V-groove which applies force evenly on collar
- With integrated bolt retainers as an assembly aid
- Connecting dimension: ISO 7005, EN 1092, BS 4504, DIN 2501
- **Bolt circle PN 10**

¹⁾ Suitable for socket- and butt fusion systems (no pictograph on flange)
AL: number of holes



d [mm]	Inch	DN [mm]	PN	Code	D [mm]	D1 [mm]	D2 [mm]	D3 [mm]	H [mm]	AL	SC
163		50	16	727 700 411	165	125	78	18	24	4	M16
175		65	16	727 700 412	185	145	92	18	26	4	M16
90		80	16	727 700 413	200	160	110	18	27	8	M16
110		100	16	727 700 414	220	180	133	18	28	8	M16
140		125	16	727 700 416	250	210	167	18	30	8	M16
160	6	150	16	727 700 417	285	241	190	22	32	8	M20
225	8	200	16	727 700 420	340	295	250	22	34	8	M20
280		250	16	727 700 422	395	350	310	22	38	12	M20
315		300	16	727 700 423	445	400	348	22	42	12	M20



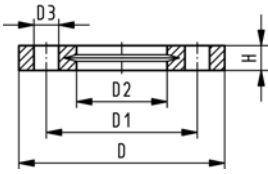
Backing Flanges, PP-V for Butt Fusion Systems Inch/ANSI

Model:

- Modern full-plastic flange PP-GF (30 % glass-fibre reinforced)
- With V-groove which applies force evenly on collar
- With integrated bolt-fixing as an assembly aid
- Connecting dimension: ANSI/ASME B 16.5 class 150, ASTM D 4024, BS 1560, BS EN 1759
- **Bolt circle class 150**

1) Suitable for socket- and butt fusion systems (no pictograph on flange)

AL: number of holes



Inch	DN [mm]	PN	Code	D [mm]	D1 [mm]	D2 [mm]	D3 [mm]	H [mm]	AL	SC
1/2	50	16	727 701 411	165	121	78	19	24	4	M16
1/2	65	16	727 701 412	185	140	92	19	26	4	M16
3/4	80	16	727 701 513	200	152	108	19	27	4	M16
1	100	16	727 701 514	229	190	128	19	28	8	M16
1 1/2	150	16	727 700 517	285	241	178	22	32	8	M20
2	200	16	727 700 520	340	295	238	22	34	8	M20
2 1/2	250	16	727 701 522	406	362	294	26	38	12	M20
3	300	16	727 701 523	483	432	338	26	42	12	M20



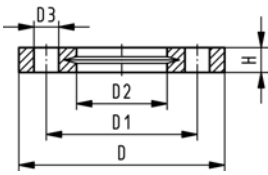
Backing Flanges, PP-V for Socket Systems Inch/ANSI

Model:

- Modern full-plastic flange PP-GF (30 % glass-fibre reinforced)
- With V-groove which applies force evenly on collar
- With integrated bolt-fixing as an assembly aid
- Connecting dimension: ANSI/ASME B 16.5 class 150, ASTM D 4024, BS 1560, BS EN 1759
- **Bolt circle class 150**

1) Suitable for socket- and butt fusion systems (no pictograph on flange)

AL: number of holes



Inch	DN [mm]	PN	Code	D [mm]	D1 [mm]	D2 [mm]	D3 [mm]	H [mm]	AL	SC
1/2	50	16	727 701 411	165	121	78	19	24	4	M16
1/2	65	16	727 701 412	185	140	92	19	26	4	M16
3/4	80	16	727 701 413	200	152	110	19	27	4	M16
1	100	16	727 701 414	229	190	133	19	28	8	M16
1 1/2	150	16	727 700 417	285	241	190	22	32	8	M20
2	200	16	727 700 420	340	295	250	22	34	8	M20
2 1/2	250	16	727 701 422	406	362	310	26	38	12	M20
3	300	16	727 701 423	483	432	348	26	42	12	M20

Integrated Position Indicator



Integrated position indicator Automatic AU

Size	DN-DN [mm]	Code	
1	50 - 80	161 486 858	
2	100 - 125	161 486 304	
3	150 - 200	161 486 009	



Integrated position indicator Automatic AG NI

Size	DN-DN [mm]	Code	
1	50 - 80	161 486 859	
2	100 - 125	161 486 305	
3	150 - 200	161 486 010	



Integrated position indicator Electric Namur

Size	DN-DN [mm]	Code	
1	50 - 80	161 486 855	
2	100 - 125	161 486 301	
3	150 - 200	161 486 006	



Integrated position indicator Electric PNP

Size	DN-DN [mm]	Code	
1	50 - 80	161 486 856	
2	100 - 125	161 486 302	
3	150 - 200	161 486 007	

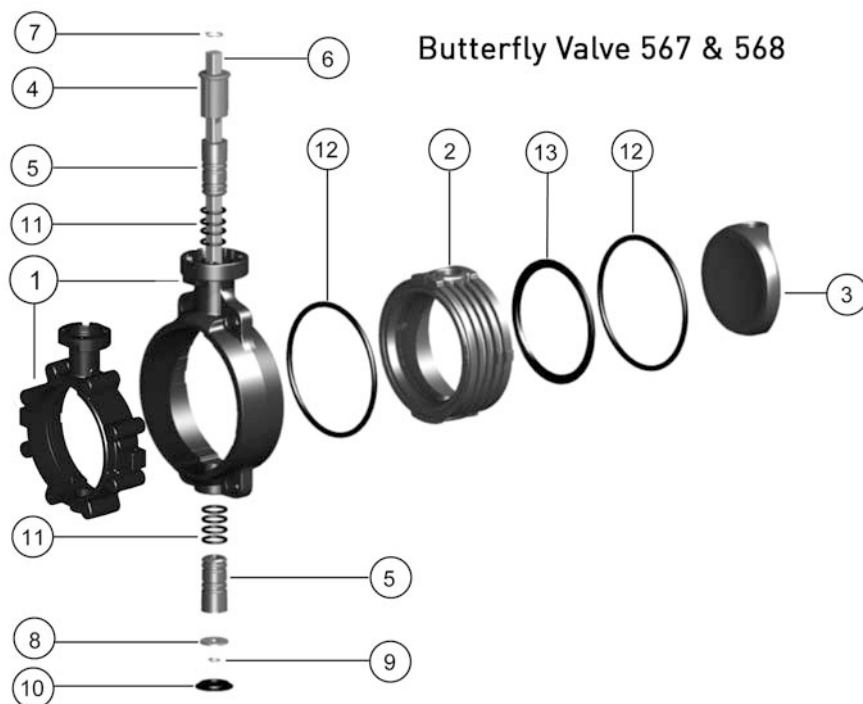


Integrated position indicator Electric NPN

Size	DN-DN [mm]	Code	
1	50 - 80	161 486 857	
2	100 - 125	161 486 303	
3	150 - 200	161 486 008	

Spare parts butterfly valves

Spare parts butterfly valve type 567/568



Inner body

Model:

- Inner body consisting of: inner body (2) and profile seal (13)

d [mm]	Inch	DN [mm]	PVC-U EPDM Code	PVC-U FPM Code	PVC-C EPDM Code	PVC-C FPM Code	ABS EPDM Code
63	2	50	161 486 861	161 486 873	163 481 591	163 481 603	169 481 067
75	2 ½	65	161 486 862	161 486 874	163 481 592	163 481 604	169 481 068
90	3	80	161 486 863	161 486 875	163 481 593	163 481 605	169 481 069
110	4	100	161 486 864	161 486 876	163 481 594	163 481 606	169 481 070
140	5	125	161 486 865	161 486 877	163 481 595	163 481 607	169 481 071
160	6	150	161 486 866	161 486 878	163 481 596	163 481 608	169 481 072
225	8	200	161 486 867	161 486 879	163 481 597	163 481 609	169 481 073
280	10	250	161 486 868	161 486 880			
315	12	300	161 486 869	161 486 881			

d [mm]	Inch	DN [mm]	PP-H EPDM Code	PP-H FPM Code	PVDF FPM Code
63	2	50	167 484 271	167 484 286	175 483 413
75	2 ½	65	167 484 272	167 484 287	175 483 414
90	3	80	167 484 273	167 484 288	175 483 415
110	4	100	167 484 274	167 484 289	175 483 416
140	5	125	167 484 275	167 484 290	175 483 417
160	6	150	167 484 276	167 484 291	175 483 418
225	8	200	167 484 277	167 484 292	175 483 419
280	10	250	167 484 278	167 484 293	175 483 420
315	12	300	167 484 279	167 484 294	175 483 421



Flange seal (12)

Model:

- included in delivery 2 pcs.

d [mm]	Inch	DN [mm]	EPDM Code	FPM Code
63	2	50	161 486 959	161 486 979
75	2 ½	65	161 486 960	161 486 980
90	3	80	161 486 961	161 486 981
110	4	100	161 486 962	161 486 982
125	5	125	161 486 963	161 486 983
160	6	150	161 486 964	161 486 984
225	8	200	161 486 965	161 486 985
280	10	250	161 486 966	161 486 986
315	12	300	161 486 967	161 486 987



Disc (3)

d [mm]	Inch	DN [mm]	PVC-U Code	PVC-C Code	ABS Code	PP-H Code	PVDF Code
63	2	50	161 490 889	163 481 451	169 480 951	167 483 226	175 483 251
75	2 ½	65	161 490 890	163 481 452	169 480 952	167 483 227	175 483 252
90	3	80	161 490 891	163 481 453	169 480 953	167 483 228	175 483 253
110	4	100	161 490 892	163 481 454	169 480 954	167 483 229	175 483 254
140	5	125	161 490 893	163 481 455	169 480 955	167 483 230	175 483 255
160	6	150	161 490 894	163 481 456	169 480 956	167 483 231	175 483 256
225	8	200	161 490 895	163 481 457	169 480 957	167 483 232	175 483 257
280	10	250	161 490 896			167 483 233	175 483 258
315	12	300	161 490 897			167 483 234	175 483 259



Bearing bush (5, 11)

Model:

- included in delivery 2 pcs.
- With O-ring

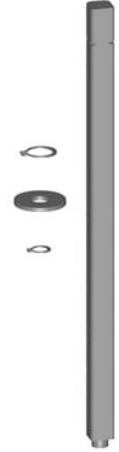
d [mm]	Inch	DN [mm]	PVC-U EPDM Code	PVC-U FPM Code	PVC-C EPDM Code	PVC-C FPM Code	PP-H EPDM Code
63	2	50	161 486 886	161 486 892	163 481 576	163 481 582	167 484 259
75	2 ½	65	161 486 886	161 486 892	163 481 576	163 481 582	167 484 259
90	3	80	161 486 886	161 486 892	163 481 576	163 481 582	167 484 259
110	4	100	161 486 887	161 486 893	163 481 577	163 481 583	167 484 260
140	5	125	161 486 887	161 486 893	163 481 577	163 481 583	167 484 260
160	6	150	161 486 888	161 486 894	163 481 578	163 481 584	167 484 261
225	8	200	161 486 888	161 486 894	163 481 578	163 481 584	167 484 261
280	10	250	161 486 889	161 486 895			167 484 262
315	12	300	161 486 889	161 486 895			167 484 262

d [mm]	Inch	DN [mm]	PP-H FPM Code	PVDF FPM Code
63	2	50	167 484 265	175 483 426
75	2 ½	65	167 484 265	175 483 426
90	3	80	167 484 265	175 483 426
110	4	100	167 484 266	175 483 427
140	5	125	167 484 266	175 483 427
160	6	150	167 484 267	175 483 428
225	8	200	167 484 267	175 483 428
280	10	250	167 484 268	175 483 429
315	12	300	167 484 268	175 483 429



End stop PP glasfiber reinforced (4)

d [mm]	Inch	DN [mm]	Code
63	2	50	167 483 251
75	2 ½	65	167 483 251
90	3	80	167 483 251
110	4	100	167 483 252
140	5	125	167 483 252
160	6	150	167 483 253
225	8	200	167 483 253
280	10	250	167 483 254
315	12	300	167 483 254



Shaft set

Model:

- Shaft set consisting of: shaft chrom steel 1.4301 AISI 304 (6), retention ring (7, 9) and washer (8)

d [mm]	Inch	DN [mm]	Code
63	2	50	161 486 899
75	2 ½	65	161 486 900
90	3	80	161 486 901
110	4	100	161 486 902
140	5	125	161 486 903
160	6	150	161 486 904
225	8	200	161 486 905
280	10	250	161 486 906
315	12	300	161 486 907



Hand lever

d [mm]	Inch	DN [mm]	with index plate Code	with fine adjustment Code
63	2	50	161 486 690	161 486 325
75	2 ½	65	161 486 690	161 486 325
90	3	80	161 486 690	161 486 325
110	4	100	161 486 691	161 486 326
140	5	125	161 486 691	161 486 326
160	6	150	161 486 694	161 486 327
225	8	200	161 486 695	161 486 328
280	10	250	161 486 697	
315	12	300	161 486 697	

Code-Index

Code	Page
-	60
161 482 408	59
161 483 180	70
161 483 462	59
161 486 006	74
161 486 007	74
161 486 008	74
161 486 009	74
161 486 010	74
161 486 301	74
161 486 302	74
161 486 303	74
161 486 304	74
161 486 305	74
161 486 325	77
161 486 326	77
161 486 327	77
161 486 328	77
161 486 690	77
161 486 691	77
161 486 694	77
161 486 695	77
161 486 697	77
161 486 855	74
161 486 856	74
161 486 857	74
161 486 858	74
161 486 859	74
161 486 861	75
161 486 862	75
161 486 863	75
161 486 864	75
161 486 865	75
161 486 866	75
161 486 867	75
161 486 868	75
161 486 869	75
161 486 873	75
161 486 874	75
161 486 875	75
161 486 876	75
161 486 877	75
161 486 878	75
161 486 879	75
161 486 880	75
161 486 881	75
161 486 886	76
161 486 887	76
161 486 888	76
161 486 889	76
161 486 892	76
161 486 893	76
161 486 894	76
161 486 895	76
161 486 899	77
161 486 900	77
161 486 901	77
161 486 902	77
161 486 903	77
161 486 904	77
161 486 905	77
161 486 906	77
161 486 907	77
161 486 959	75
161 486 960	75
161 486 961	75
161 486 962	75
161 486 963	75
161 486 964	75
161 486 965	75
161 486 966	75

Code	Page
161 486 967	75
161 486 979	75
161 486 980	75
161 486 981	75
161 486 982	75
161 486 983	75
161 486 984	75
161 486 985	75
161 486 986	75
161 486 987	75
161 490 889	76
161 490 890	76
161 490 891	76
161 490 892	76
161 490 893	76
161 490 894	76
161 490 895	76
161 490 896	76
161 490 897	76
161 567 002	5
161 567 003	5
161 567 004	5
161 567 005	5
161 567 006	5
161 567 007	5
161 567 008	5
161 567 009	5
161 567 010	5
161 567 022	5
161 567 023	5
161 567 024	5
161 567 025	5
161 567 026	5
161 567 027	5
161 567 028	5
161 567 029	5
161 567 030	5
161 567 042	6
161 567 043	6
161 567 044	6
161 567 045	6
161 567 046	6
161 567 047	6
161 567 048	6
161 567 049	6
161 567 050	6
161 567 062	6
161 567 063	6
161 567 064	6
161 567 065	6
161 567 066	6
161 567 067	6
161 567 068	6
161 567 069	6
161 567 070	6
161 567 402	8
161 567 403	8
161 567 404	8
161 567 405	8
161 567 406	8
161 567 407	8
161 567 408	8
161 567 422	8
161 567 423	8
161 567 424	8
161 567 425	8
161 567 426	8
161 567 427	8
161 567 428	8
161 567 802	5
161 567 803	5

Code	Page
161 567 804	5
161 567 805	5
161 567 806	5
161 567 807	5
161 567 808	5
161 567 809	5
161 567 810	5
161 567 822	5
161 567 823	5
161 567 824	5
161 567 825	5
161 567 826	5
161 567 827	5
161 567 828	5
161 567 829	5
161 567 830	5
163 481 451	76
163 481 452	76
163 481 453	76
163 481 454	76
163 481 455	76
163 481 456	76
163 481 457	76
163 481 576	76
163 481 577	76
163 481 578	76
163 481 582	76
163 481 583	76
163 481 584	76
163 481 591	75
163 481 592	75
163 481 593	75
163 481 594	75
163 481 595	75
163 481 596	75
163 481 597	75
163 481 603	75
163 481 604	75
163 481 605	75
163 481 606	75
163 481 607	75
163 481 608	75
163 481 609	75
163 567 002	16
163 567 003	16
163 567 004	16
163 567 005	16
163 567 006	16
163 567 007	16
163 567 008	16
163 567 022	16
163 567 023	16
163 567 024	16
163 567 025	16
163 567 026	16
163 567 027	16
163 567 028	16
163 567 042	17
163 567 043	17
163 567 044	17
163 567 045	17
163 567 046	17
163 567 047	17
163 567 048	17
163 567 062	17
163 567 063	17
163 567 064	17
163 567 065	17
163 567 066	17
163 567 067	17
163 567 068	17

Code-Index

Code	Page
163 567 802	16
163 567 803	16
163 567 804	16
163 567 805	16
163 567 806	16
163 567 807	16
163 567 808	16
163 567 822	16
163 567 823	16
163 567 824	16
163 567 825	16
163 567 826	16
163 567 827	16
163 567 828	16
167 483 226	76
167 483 227	76
167 483 228	76
167 483 229	76
167 483 230	76
167 483 231	76
167 483 232	76
167 483 233	76
167 483 234	76
167 483 251	76
167 483 252	76
167 483 253	76
167 483 254	76
167 484 259	76
167 484 260	76
167 484 261	76
167 484 262	76
167 484 265	76
167 484 266	76
167 484 267	76
167 484 268	76
167 484 271	75
167 484 272	75
167 484 273	75
167 484 274	75
167 484 275	75
167 484 276	75
167 484 277	75
167 484 278	75
167 484 279	75
167 484 286	75
167 484 287	75
167 484 288	75
167 484 289	75
167 484 290	75
167 484 291	75
167 484 292	75
167 484 293	75
167 484 294	75
167 567 002	36
167 567 003	36
167 567 004	36
167 567 005	36
167 567 006	36
167 567 007	36
167 567 008	36
167 567 009	36
167 567 010	36
167 567 022	36
167 567 023	36
167 567 024	36
167 567 025	36
167 567 026	36
167 567 027	36
167 567 028	36
167 567 029	36
167 567 030	36

Code	Page
167 567 042	37
167 567 043	37
167 567 044	37
167 567 045	37
167 567 046	37
167 567 047	37
167 567 048	37
167 567 049	37
167 567 050	37
167 567 062	37
167 567 063	37
167 567 064	37
167 567 065	37
167 567 066	37
167 567 067	37
167 567 068	37
167 567 069	37
167 567 070	37
167 567 402	39
167 567 403	39
167 567 404	39
167 567 405	39
167 567 406	39
167 567 407	39
167 567 408	39
167 567 422	39
167 567 423	39
167 567 424	39
167 567 425	39
167 567 426	39
167 567 427	39
167 567 428	39
167 567 802	36
167 567 803	36
167 567 804	36
167 567 805	36
167 567 806	36
167 567 807	36
167 567 808	36
167 567 809	36
167 567 810	36
167 567 822	36
167 567 823	36
167 567 824	36
167 567 825	36
167 567 826	36
167 567 827	36
167 567 828	36
167 567 829	36
167 567 830	36
169 480 951	76
169 480 952	76
169 480 953	76
169 480 954	76
169 480 955	76
169 480 956	76
169 480 957	76
169 481 067	75
169 481 068	75
169 481 069	75
169 481 070	75
169 481 071	75
169 481 072	75
169 481 073	75
169 567 002	26
169 567 003	26
169 567 004	26
169 567 005	26
169 567 006	26
169 567 007	26
169 567 008	26

Code	Page
169 567 022	27
169 567 023	27
169 567 024	27
169 567 025	27
169 567 026	27
169 567 027	27
169 567 028	27
169 567 802	26
169 567 803	26
169 567 804	26
169 567 805	26
169 567 806	26
169 567 807	26
169 567 808	26
175 483 251	76
175 483 252	76
175 483 253	76
175 483 254	76
175 483 255	76
175 483 256	76
175 483 257	76
175 483 258	76
175 483 259	76
175 483 413	75
175 483 414	75
175 483 415	75
175 483 416	75
175 483 417	75
175 483 418	75
175 483 419	75
175 483 420	75
175 483 421	75
175 483 426	76
175 483 427	76
175 483 428	76
175 483 429	76
175 567 002	47
175 567 003	47
175 567 004	47
175 567 005	47
175 567 006	47
175 567 007	47
175 567 008	47
175 567 009	47
175 567 010	47
175 567 022	48
175 567 023	48
175 567 024	48
175 567 025	48
175 567 026	48
175 567 027	48
175 567 028	48
175 567 029	48
175 567 030	48
175 567 202	47
175 567 203	47
175 567 204	47
175 567 205	47
175 567 206	47
175 567 207	47
175 567 208	47
175 567 209	47
175 567 210	47
175 567 222	48
175 567 223	48
175 567 224	48
175 567 225	48
175 567 226	48
175 567 227	48
175 567 228	48
175 567 229	48

Code-Index

Code	Page
175 567 230	48
175 567 822	47
175 567 823	47
175 567 824	47
175 567 825	47
175 567 826	47
175 567 827	47
175 567 828	47
175 567 829	47
175 567 830	47
175 567 842	47
175 567 843	47
175 567 844	47
175 567 845	47
175 567 846	47
175 567 847	47
175 567 848	47
175 567 849	47
175 567 850	47
198 000 595	57
198 000 596	57
198 000 597	57
198 000 598	57
198 000 599	58
198 000 600	57
198 000 601	57
198 000 602	57
198 000 603	57
198 000 621	58
198 000 622	58
198 000 623	58
198 000 624	58
198 000 625	58
198 000 627	58
198 000 730	57
198 000 731	57
198 000 732	58
198 150 184	59
198 150 185	59
198 150 186	59
198 150 187	59
198 800 004	60
198 800 005	60
198 800 006	60
198 800 007	60
198 800 017	60
198 800 018	60
198 800 019	60
198 800 020	60
198 800 034	60
198 800 037	60
198 800 039	60
198 800 040	62
198 800 041	60
198 800 042	62
198 800 043	60
198 800 044	62
198 800 045	60
198 800 046	62
198 800 047	60
198 800 048	62
198 800 050	62
198 800 051	62
198 800 052	60
198 800 054	60
198 800 056	60
198 800 058	60
198 800 060	60
198 800 062	60
198 800 728	60
198 800 729	60

Code	Page
198 800 730	60
198 800 731	60
198 800 733	62
198 800 734	62
198 800 735	62
198 800 737	62
198 800 757	60
198 800 758	62
198 800 759	62
198 811 025	60
198 811 026	60
198 811 027	60
198 811 028	60
198 811 029	60
198 811 030	60
198 811 198	60
199 140 002	9
199 140 003	9
199 140 004	9
199 140 005	9
199 140 006	9
199 140 007	9
199 140 008	9
199 140 022	9
199 140 023	9
199 140 024	9
199 140 025	9
199 140 026	9
199 140 027	9
199 140 028	9
199 140 042	9
199 140 043	9
199 140 044	9
199 140 045	9
199 140 046	9
199 140 047	9
199 140 048	9
199 140 049	9
199 140 050	9
199 140 062	9
199 140 063	9
199 140 064	9
199 140 065	9
199 140 066	9
199 140 067	9
199 140 068	9
199 140 069	9
199 140 070	9
199 140 082	11
199 140 083	11
199 140 084	11
199 140 085	11
199 140 086	11
199 140 087	11
199 140 088	11
199 140 102	11
199 140 103	11
199 140 104	11
199 140 105	11
199 140 106	11
199 140 107	11
199 140 108	11
199 140 122	10
199 140 123	10
199 140 124	10
199 140 125	10
199 140 126	10
199 140 127	10
199 140 128	10
199 140 129	10
199 140 130	10

Code	Page
199 140 142	10
199 140 143	10
199 140 144	10
199 140 145	10
199 140 146	10
199 140 147	10
199 140 148	10
199 140 149	10
199 140 150	10
199 140 162	19
199 140 163	19
199 140 164	19
199 140 165	19
199 140 166	19
199 140 167	19
199 140 168	19
199 140 182	19
199 140 183	19
199 140 184	19
199 140 185	19
199 140 186	19
199 140 187	19
199 140 188	19
199 140 202	19
199 140 203	19
199 140 204	19
199 140 205	19
199 140 206	19
199 140 207	19
199 140 208	19
199 140 222	19
199 140 223	19
199 140 224	19
199 140 225	19
199 140 226	19
199 140 227	19
199 140 228	19
199 140 242	21
199 140 243	21
199 140 244	21
199 140 245	21
199 140 246	21
199 140 247	21
199 140 248	21
199 140 262	21
199 140 263	21
199 140 264	21
199 140 265	21
199 140 266	21
199 140 267	21
199 140 268	21
199 140 282	20
199 140 283	20
199 140 284	20
199 140 285	20
199 140 286	20
199 140 287	20
199 140 288	20
199 140 302	20
199 140 303	20
199 140 304	20
199 140 305	20
199 140 306	20
199 140 307	20
199 140 308	20
199 140 322	42
199 140 323	42
199 140 324	42
199 140 325	42
199 140 326	42
199 140 327	42

Code-Index

Code	Page
199 140 328	42
199 140 342	42
199 140 343	42
199 140 344	42
199 140 345	42
199 140 346	42
199 140 347	42
199 140 348	42
199 140 362	41
199 140 363	41
199 140 364	41
199 140 365	41
199 140 366	41
199 140 367	41
199 140 368	41
199 140 369	41
199 140 370	41
199 140 382	41
199 140 383	41
199 140 384	41
199 140 385	41
199 140 386	41
199 140 387	41
199 140 388	41
199 140 389	41
199 140 390	41
199 140 402	40
199 140 403	40
199 140 404	40
199 140 405	40
199 140 406	40
199 140 407	40
199 140 408	40
199 140 422	40
199 140 423	40
199 140 424	40
199 140 425	40
199 140 426	40
199 140 427	40
199 140 428	40
199 140 442	40
199 140 443	40
199 140 444	40
199 140 445	40
199 140 446	40
199 140 447	40
199 140 448	40
199 140 449	40
199 140 450	40
199 140 462	40
199 140 463	40
199 140 464	40
199 140 465	40
199 140 466	40
199 140 467	40
199 140 468	40
199 140 469	40
199 140 470	40
199 140 482	29
199 140 483	29
199 140 484	29
199 140 485	29
199 140 486	29
199 140 487	29
199 140 488	29
199 140 502	29
199 140 503	29
199 140 504	29
199 140 505	29
199 140 506	29
199 140 507	29

Code	Page
199 140 508	29
199 140 522	31
199 140 523	31
199 140 524	31
199 140 525	31
199 140 526	31
199 140 527	31
199 140 528	31
199 140 542	30
199 140 543	30
199 140 544	30
199 140 545	30
199 140 546	30
199 140 547	30
199 140 548	30
199 140 562	52
199 140 563	52
199 140 564	52
199 140 565	52
199 140 566	52
199 140 567	52
199 140 568	52
199 140 582	51
199 140 583	51
199 140 584	51
199 140 585	51
199 140 586	51
199 140 587	51
199 140 588	51
199 140 589	51
199 140 590	51
199 140 602	50
199 140 603	50
199 140 604	50
199 140 605	50
199 140 606	50
199 140 607	50
199 140 608	50
199 140 622	50
199 140 623	50
199 140 624	50
199 140 625	50
199 140 626	50
199 140 627	50
199 140 628	50
199 140 629	50
199 140 630	50
199 140 642	51
199 140 643	51
199 140 644	51
199 140 645	51
199 140 646	51
199 140 647	51
199 140 648	51
199 140 649	51
199 140 650	51
199 140 662	50
199 140 663	50
199 140 664	50
199 140 665	50
199 140 666	50
199 140 667	50
199 140 668	50
199 140 669	50
199 140 670	50
199 240 002	13
199 240 003	13
199 240 004	13
199 240 005	13
199 240 006	13
199 240 007	13

Code	Page
199 240 008	13
199 240 009	13
199 240 010	13
199 240 022	13
199 240 023	13
199 240 024	13
199 240 025	13
199 240 026	13
199 240 027	13
199 240 028	13
199 240 029	13
199 240 030	13
199 240 042	13
199 240 043	13
199 240 044	13
199 240 045	13
199 240 046	13
199 240 047	13
199 240 048	13
199 240 049	13
199 240 050	13
199 240 062	13
199 240 063	13
199 240 064	13
199 240 065	13
199 240 066	13
199 240 067	13
199 240 068	13
199 240 069	13
199 240 070	13
199 240 082	14
199 240 083	14
199 240 084	14
199 240 085	14
199 240 086	14
199 240 087	14
199 240 088	14
199 240 089	14
199 240 090	14
199 240 102	14
199 240 103	14
199 240 104	14
199 240 105	14
199 240 106	14
199 240 107	14
199 240 108	14
199 240 109	14
199 240 110	14
199 240 162	23
199 240 163	23
199 240 164	23
199 240 165	23
199 240 166	23
199 240 167	23
199 240 168	23
199 240 182	23
199 240 183	23
199 240 184	23
199 240 185	23
199 240 186	23
199 240 187	23
199 240 188	23
199 240 202	23
199 240 203	23
199 240 204	23
199 240 205	23
199 240 206	23
199 240 207	23
199 240 208	23
199 240 222	23
199 240 223	23

Code-Index

Code	Page
199 240 224	23
199 240 225	23
199 240 226	23
199 240 227	23
199 240 228	23
199 240 242	24
199 240 243	24
199 240 244	24
199 240 245	24
199 240 246	24
199 240 247	24
199 240 248	24
199 240 262	24
199 240 263	24
199 240 264	24
199 240 265	24
199 240 266	24
199 240 267	24
199 240 268	24
199 240 282	44
199 240 283	44
199 240 284	44
199 240 285	44
199 240 286	44
199 240 287	44
199 240 288	44
199 240 289	44
199 240 290	44
199 240 302	44
199 240 303	44
199 240 304	44
199 240 305	44
199 240 306	44
199 240 307	44
199 240 308	44
199 240 309	44
199 240 310	44
199 240 322	44
199 240 323	44
199 240 324	44
199 240 325	44
199 240 326	44
199 240 327	44
199 240 328	44
199 240 329	44
199 240 330	44
199 240 342	44
199 240 343	44
199 240 344	44
199 240 345	44
199 240 346	44
199 240 347	44
199 240 348	44
199 240 349	44
199 240 350	44
199 240 362	45
199 240 363	45
199 240 364	45
199 240 365	45
199 240 366	45
199 240 367	45
199 240 368	45
199 240 369	45
199 240 370	45
199 240 382	45
199 240 383	45
199 240 384	45
199 240 385	45
199 240 386	45
199 240 387	45
199 240 388	45

Code	Page
199 240 389	45
199 240 390	45
199 240 402	33
199 240 403	33
199 240 404	33
199 240 405	33
199 240 406	33
199 240 407	33
199 240 408	33
199 240 422	33
199 240 423	33
199 240 424	33
199 240 425	33
199 240 426	33
199 240 427	33
199 240 428	33
199 240 442	34
199 240 443	34
199 240 444	34
199 240 445	34
199 240 446	34
199 240 447	34
199 240 448	34
199 240 462	54
199 240 463	54
199 240 464	54
199 240 465	54
199 240 466	54
199 240 467	54
199 240 468	54
199 240 469	54
199 240 470	54
199 240 482	54
199 240 483	54
199 240 484	54
199 240 485	54
199 240 486	54
199 240 487	54
199 240 488	54
199 240 489	54
199 240 490	54
199 240 502	55
199 240 503	55
199 240 504	55
199 240 505	55
199 240 506	55
199 240 507	55
199 240 508	55
199 240 509	55
199 240 510	55
199 240 522	54
199 240 523	54
199 240 524	54
199 240 525	54
199 240 526	54
199 240 527	54
199 240 528	54
199 240 529	54
199 240 530	54
199 240 542	54
199 240 543	54
199 240 544	54
199 240 545	54
199 240 546	54
199 240 547	54
199 240 548	54
199 240 549	54
199 240 550	54
199 240 562	55
199 240 563	55
199 240 564	55

Code	Page
199 240 565	55
199 240 566	55
199 240 567	55
199 240 568	55
199 240 569	55
199 240 570	55
721 700 011	70
721 700 012	70
721 700 013	70
721 700 014	70
721 700 016	70
721 700 017	70
721 700 020	70
721 700 137	70
721 700 138	70
721 702 211	70
721 702 212	70
721 702 213	70
721 702 214	70
721 702 216	70
721 702 217	70
721 702 220	70
721 790 111	64
721 790 112	64
721 790 113	64
721 790 114	64
721 790 116	64
721 790 117	64
721 790 120	64
721 790 122	64
721 790 123	64
723 790 111	64
723 790 112	64
723 790 113	64
723 790 114	64
723 790 117	64
723 790 120	64
727 700 211	71
727 700 212	71
727 700 213	71
727 700 214	71
727 700 216	71
727 700 217	71
727 700 220	71
727 700 222	71
727 700 223	71
727 700 411	72
727 700 412	72
727 700 413	72
727 700 414	72
727 700 416	72
727 700 417	73
727 700 420	73
727 700 422	72
727 700 423	72
727 700 513	72
727 700 515	72
727 700 516	72
727 700 517	72
727 700 520	72
727 700 522	72
727 700 523	72
727 701 211	71
727 701 212	71
727 701 213	71
727 701 214	71
727 701 220	71
727 701 411	73
727 701 412	73
727 701 413	73
727 701 414	73

Code-Index

Code	Page
727 701 422	73
727 701 423	73
727 701 513	72
727 701 514	72
727 701 522	72
727 701 523	72
727 798 711	67
727 798 712	67
727 798 713	67
727 798 714	67
727 798 716	67
727 798 717	67
727 798 720	67
727 798 722	67
727 798 723	67
727 798 786	68
727 798 787	68
727 798 788	68
727 798 789	68
727 798 791	68
727 798 792	68
727 798 795	68
727 798 797	68
727 798 798	68
729 790 111	64
729 790 112	64
729 790 113	64
729 790 114	64
729 790 116	64
729 790 117	64
729 790 120	64
735 798 811	69
735 798 812	69
735 798 813	69
735 798 814	69
735 798 816	69
735 798 817	69
735 798 820	69
753 798 827	65
753 798 828	65
753 798 852	66
753 798 853	66
753 800 011	65
753 800 012	65
753 800 013	65
753 800 014	65
753 800 016	65
753 800 017	65
753 800 020	65
753 800 022	65
753 800 023	65
753 800 086	66
753 800 087	66
753 800 088	66
753 800 089	66
753 800 091	66
753 800 092	66
753 800 095	66
753 800 097	66
753 800 098	66

General Condition of Supply of Georg Fischer Piping Systems Limited, Schaffhausen

1 General

- 1.1 These General Conditions shall apply to all Products supplied by Georg Fischer to the Purchaser. They shall also apply to all future business even when no express reference is made to them.
- 1.2 Any deviating or supplementary conditions especially Purchaser's general conditions of purchase and verbal agreements shall only be applicable if accepted in writing by Georg Fischer.
- 1.3 The written form shall be deemed to be fulfilled by all forms of transmission, evidenced in the form of text, such as telefax, e-mail, etc.

2 Tenders

- 2.1 Tenders shall only be binding if they contain a specifically stated period for acceptance.

3 Scope of Delivery

- 3.1 Georg Fischer's product range is subject to change.
- 3.2 The confirmation of order shall govern the scope and execution of the contract.

4 Data and Documents

- 4.1 Technical documents such as drawings, descriptions, illustrations and data on dimensions, performance and weight as well as the reference to standards are for information purposes only. They are not warranted characteristics and are subject to change.
- 4.2 All technical documents shall remain the exclusive property of Georg Fischer and may only be used for the agreed purposes or as Georg Fischer may consent.

5 Confidentiality, Protection of Personal Data

- 5.1 Each party shall keep in strict confidence all commercial or technical information relating to the business of the other party, of which it has gained knowledge in the course of its dealing with the other party. Such information shall neither be disclosed to third parties nor used for other purposes than those for which the information has been supplied.
- 5.2 In the context of the contractual relation with the Purchaser personal data may be processed. The Purchaser agrees to the disclosure of said data to third parties such as foreign subcontractors and suppliers etc.

6 Local Laws and Regulations, Export Controls

- 6.1 The Purchaser shall bring to the attention of Georg Fischer all local laws and regulations at the place of destination which bear connection with the execution of the contract and the adherence to relevant safety regulations and approval procedures.
- 6.2 In case of re-exports, Purchaser shall be responsible for compliance with pertinent export control regulations.

7 Price

- 7.1 Unless agreed otherwise, the prices shall be deemed quoted net ex works (according to Incoterms of the ICC, latest version) including standard packing. All supplementary costs such as the cost of carriage, insurance, export-, transit- and import duties etc. shall be borne by the Purchaser. The Purchaser shall also bear the costs of all taxes, fees, duties etc. connected with the contract.
- 7.2 If the costs of packing, carriage, insurance, fees and other supplementary costs are included in the tender price or contract price or are referred to specifically in the tender or confirmation of order, Georg Fischer reserve the right to revise their prices accordingly should any change occur in the relevant tariffs.

8 Terms of Payment

- 8.1 The Purchaser shall make payment in the manner agreed by the parties without any deductions such as discounts, costs, taxes or dues.
- 8.2 The Purchaser may only withhold or off-set payments due against counter claims which are either expressly acknowledged by Georg Fischer or finally awarded to the Purchaser. In particular, payment shall still be made when unessential items are still out-standing provided that the Products already delivered are not rendered unusable as a result.

9 Retention of Title

- 9.1 The Products shall remain the property of Georg Fischer until the Purchaser shall have settled all claims, present and future, which Georg Fischer may have against him.
- 9.2 Should the Purchaser resell Products to which title is reserved, in the ordinary course of business, he shall hereby be deemed to have tacitly assigned to Georg Fischer the proceeds deriving from their sale together with all collateral rights, securities and reservations of title until all claims held by Georg Fischer shall have been settled. Until revoked by Georg Fischer, this assignment shall not preclude Purchaser's right to collect the assigned receivables.
- 9.3 To the extent the value of the Products to which title is reserved together with collateral securities exceeds Georg Fischer's claims against the Purchaser by more than 20%, Georg Fischer shall re-assign the above proceeds to Purchaser at his request.

10 Delivery

- 10.1 The term of delivery shall commence as soon as the contract has been entered into, all official formalities such as import and payment permits have been obtained and all essential technical issues have been settled. The term of delivery shall be deemed duly observed when, upon its expiry, the Products are ready for despatch.
- 10.2 Delivery is subject to the following conditions, i.e. the term of delivery shall be reasonably extended:
 - a) if Georg Fischer are not supplied in time with the information necessary for the execution of the contract or if subsequent changes causing delays are made by the Purchaser.
 - b) if Georg Fischer are prevented from performing the contract by force majeure. Force majeure shall equally be deemed to be any unforeseeable event beyond Georg Fischer's control which renders Georg Fischer's performance commercially unpractical or impossible, such as delayed or defective supplies from sub contractors labour disputes, governmental orders or regulations, shortages in materials or energy, serious disturbances in Georg Fischer's works, such as the total or partial destruction of plant and equipment or the breakdown of essential facilities, serious disruptions in transport facilities, e.g. impassable roads.
Should the effect of force majeure exceed a period of six months, either party may cancel the contract forthwith.
Georg Fischer shall not be liable for any damage or loss of any kind whatsoever resulting therefrom, any suspension or cancellation being without prejudice to Georg Fischer's right to recover all sums due in respect of consignments delivered and costs incurred to date.
 - c) if the Purchaser is in delay with the fulfilment of his obligations under the contract, in particular, if he does not adhere to the agreed conditions of payment or if he has failed to timely provide the agreed securities.
- 10.3 If for reasons attributable to Georg Fischer the agreed term of delivery or a reasonable extension thereof is exceeded, Georg Fischer shall not be deemed in default until the Purchaser has granted to Georg Fischer in writing a reasonable extension thereof of not less than one month which equally is not met.
The Purchaser shall then be entitled to the remedies provided at law, it being however understood that, subject to limitations of Art. 16, damage claims shall be limited to max. 10% of the price of the delayed delivery.
- 10.4 Part shipments shall be allowed and Georg Fischer shall be entitled to invoice for such partial deliveries.
- 10.5 If the Purchaser fails to take delivery within a reasonable time of Products notified as ready for despatch, Georg Fischer shall be entitled to store the Products at the Purchaser's expense and risk and to invoice them as delivered. If Purchaser fails to effect payment, Georg Fischer shall be entitled to dispose of the Products.
- 10.6 Should Purchaser cancel an order without justification and should Georg Fischer not insist on the performance of the contract, Georg Fischer shall be entitled to liquidated damages in the amount of 10% of the contract price, Georg Fischer's right to prove and claim higher damages remaining reserved. Purchaser shall be entitled to prove, that Georg Fischer has suffered no or a considerably lower damage.

11 Packing

- 11.1 If the Products are provided with additional packing over and above the standard packing, such packing shall be charged additionally.

12 Passing of Risk

- 12.1 The risk in the Products shall pass to the Purchaser as soon as they have left Georg Fischer's works (EX WORKS, Incoterms ICC, latest version), even if delivery is made carriage-paid, under similar clauses or including installation or when carriage is organized and managed by Georg Fischer.
- 12.2 If delivery is delayed for reasons beyond Georg Fischer's control, the risk shall pass to the Purchaser when he is notified that the Products are ready for despatch.

13 Carriage and Insurance

- 13.1 Unless agreed otherwise, the Purchaser shall bear the cost of carriage.
- 13.2 The Purchaser shall be responsible for transport insurance against damage of whatever kind. Even when such insurance is arranged by Georg Fischer it shall be deemed taken out by the order of and for the account of the Purchaser and at his risk.
- 13.3 Special requests regarding carriage and insurance shall be communicated to Georg Fischer in due time. Otherwise carriage shall be arranged by Georg Fischer at their discretion, but without responsibility, by the quickest and cheapest method possible.
In case of carriage-paid delivery transport arrangements shall be made by Georg Fischer. If the Purchaser specifies particular requirements, any extra costs involved shall be borne by him.
- 13.4 In the event of damage or loss of the Products during carriage the Purchaser shall mark the delivery documents accordingly and immediately have the damage ascertained by the carrier. Not readily ascertainable damages sustained during carriage shall be notified to the carrier within six days after receipt of the Products.

14 Inspection, Notification of Defects and Damages

- 14.1 The Products will be subject to normal inspection by Georg Fischer during manufacture. Additional tests required by the Purchaser shall be agreed upon in writing and shall be charged to the Purchaser.
- 14.2 It shall be a condition of Georg Fischer's obligation under the warranties stated hereinafter that Georg Fischer be notified in writing by the Purchaser of any purported defect immediately upon discovery. Notice concerning weight, numbers or apparent defects is to be given latest within 30 days from receipt of the Products, notice of other defects immediately latest within 7 working days after discovery, in any event within the agreed warranty period.
- 14.3 Purchaser shall not dispose of allegedly defective Products until all warranty and/or damage claims are finally settled. At its request, defective Products are to be placed at Georg Fischer's disposal.
- 14.4 At its request, Georg Fischer shall be given the opportunity to inspect the defect and/or damage, prior to commencement of remedial work, either itself or by third party experts.

15 Warranty

- 15.1 At the written request of the Purchaser, Georg Fischer undertake to repair or replace at their discretion, as quickly as possible and free of charge all Products supplied which demonstrably suffer from faulty design, materials or workman-ship or from faulty operating or installation instructions.
In order to protect employees from toxic or radioactive substances which may have been transported through defective parts returned to Georg Fischer's sales organisation, said parts must be accompanied by a Material Safety Disclosure Form. The form may be obtained from Georg Fischer's local sales company or via www.piping.georgfischer.com.
Replaced parts shall become property of Georg Fischer.
- 15.2 For Products which are manufactured to specifications, drawings or patterns supplied by the Purchaser, Georg Fischer's warranty shall be restricted to proper materials and workmanship.
- 15.3 The Purchaser shall be entitled to cancel the contract or to demand a reduction in the contract price if also a second attempt to repair or replace the Products has failed.
- 15.4 For Products or essential components manufactured by a third party and supplied by Georg Fischer under this contract, Georg Fischer's warranty is limited to the warranty provided by said third party.
- 15.5 This warranty shall not apply to damage resulting from normal wear and tear, improper storage and maintenance, failure to observe the operating instructions, overstressing or overloading, unsuitable operating media, unsuitable construction work or unsuitable building ground, improper repairs or alterations by the Purchaser or third parties, the use of other than original spare parts and other reasons beyond Georg Fischer's control.
- 15.6 No action or claim may be brought by the Purchaser on account of any alleged breach of warranty or any other obligation of Georg Fischer after the expiration of twelve (12) months from receipt of the Products by the end user or at the latest within eighteen (18) months of the Products being despatched by Georg Fischer.
- 15.7 In case of Products for use in domestic installations or in utilities
 - Georg Fischer will assume the costs of dismantling the defective Product and restoring the damaged object as well as, in case of negligence, all other direct damages caused by the defective Product (damage to property and injury to or death of persons) up to CHF 1 000 000 per occurrence.
 - the statute of limitations for warranty or damage claims - contrary to Section 15.6 - will be 5 years from the date of installation.

16 Limitation of Liability

- 16.1 All cases of breach of contract and the relevant consequences as well as all rights and claims on the part of the customer, irrespective of what ground they are based, are exhaustively covered by these general conditions of supply. In particular, any claims not expressly mentioned for damages, reduction of price, termination of or withdrawal from the contract are excluded. In no case whatsoever shall the customer be entitled to claim damages other than compensation for costs of remedying defects in the supplies. This in particular refers, but shall not be limited, to loss of production, loss of use, loss of orders, loss of profit and other direct or indirect or consequential damage. This exclusion of liability, however, does not apply to unlawful intent or gross negligence on the part of Georg Fischer and in case of strict liability under applicable product liability statutes, but does apply to unlawful intent or gross negligence of persons employed or appointed by Georg Fischer to perform any of its obligations.

17 Severability

- 17.1 Should any term or clause of these General Conditions in whole or in part be found to be unenforceable or void, all other provisions shall remain in full force and effect and the unenforceable or void provision shall be replaced by a valid provision, which comes closest to the original intention of the unenforceable or invalid provision.

18 Place of Performance and Jurisdiction

- 18.1 Place of performance for the Products shall be the Georg Fischer works from which the Products are despatched.
- 18.2 Any civil action based upon any alleged breach of this contract shall be filed and prosecuted exclusively in the courts of Schaffhausen, Switzerland.
Georg Fischer however reserves the right to file actions in any court having jurisdiction over controversies arising out of or in connection with the present contract.
- 18.3 The contract shall be governed by Swiss law without regard to conflict of law provisions that would require the application of another law.

GF Piping Systems → worldwide at home

Our sales companies and representatives ensure local customer support in over 100 countries.

www.piping.georgfischer.com

www.type567.georgfischer.com



The technical data are not binding and not expressly warranted characteristics of the goods. They are subject to change. Our General Conditions of Sale apply.

Adding Quality to People's Lives

Australia

George Fischer Pty Ltd
Riverwood NSW 2210 Australia
Phone +61(0)2 9502 8000
australia.ps@georgfischer.com
www.georgfischer.com.au

Austria

Georg Fischer
Rohrleitungssysteme GmbH
3130 Herzogenburg
Phone +43(0)2782 856 43-0
austria.ps@georgfischer.com
www.georgfischer.at

Belgium/Luxembourg

Georg Fischer NV/SA
1070 Bruxelles/Brüssel
Phone +32(0)2 556 40 20
be.ps@georgfischer.com
www.georgfischer.be

Brazil

George Fischer Ltda
04795-100 São Paulo
Phone +55(0)11 5687 1311
br.ps@georgfischer.com

China

Georg Fischer
Piping Systems Ltd Shanghai
Pudong, Shanghai 201319
Phone +86(0)21 58 13 33 33
china.ps@georgfischer.com
www.cn.piping.georgfischer.com

Denmark/Iceland

Georg Fischer A/S
2630 Taastrup
Phone +45 (0)70 22 19 75
info.dk.ps@georgfischer.com
www.georgfischer.dk

France

Georg Fischer SAS
95932 Roissy Charles de Gaulle Cedex
Phone +33(0)1 41 84 68 84
fr.ps@georgfischer.com
www.georgfischer.fr

Germany

Georg Fischer GmbH
73095 Albershausen
Phone +49(0)7161 302-0
info.de.ps@georgfischer.com
www.georgfischer.de

India

Georg Fischer Piping Systems Ltd
400 076 Mumbai
Phone +91 224007 2001
in.ps@georgfischer.com
www.georgfischer.in

Italy

Georg Fischer S.p.A.
20063 Cernusco S/N (MI)
Phone +3902 921 861
it.ps@georgfischer.com
www.georgfischer.it

Japan

Georg Fischer Ltd
556-0011 Osaka,
Phone +81(0)6 6635 2691
jp.ps@georgfischer.com
www.georgfischer.jp

Korea

Georg Fischer Piping Systems
Guro-3 dong, Guro-gu, Seoul, Korea
Phone +82(0)2 2081 1450
Fax +82(0)2 2081 1453
kor.ps@georgfischer.com

Malaysia

George Fischer (M) Sdn. Bhd.
40460 Shah Alam, Selangor Darul Ehsan
Phone +60 (0)3 5122 5585
my.ps@georgfischer.com

Mexico

Georg Fischer S.A. de C.V.
Apodaca, Nuevo Leon
CP66636 Mexico
Phone +52 (81)1340 8586
Fax +52 (81)1522 8906

Middle East

Georg Fischer Piping Systems
Dubai, United Arab Emirates
Phone +971 4 289 49 60
info.export@georgfischer.com
www.export.georgfischer.com

Netherlands

Georg Fischer N.V.
8161 PA Epe
Phone +31(0)67 18 29 00
nl.ps@georgfischer.com
www.georgfischer.nl

Norway

Georg Fischer AS
1351 Rud
Phone +47(0)67 18 29 00
no.ps@georgfischer.com
www.georgfischer.no

Poland

Georg Fischer Sp. z o.o.
02-226 Warszawa
Phone +48(0)22 313 10 50
poland.ps@georgfischer.com
www.georgfischer.pl

Romania

Georg Fischer
Piping Systems Ltd
020257 Bucharest - Sector 2
Phone +40(0)21 230 53 80
ro.ps@georgfischer.com
www.export.georgfischer.com

Russia

Georg Fischer Piping Systems
Moscow 125047
Tel. +7 495 258 60 80
ru.ps@georgfischer.com
www.georgfischer.ru

Singapore

George Fischer Pte Ltd
528 872 Singapore
Phone +65(0)67 47 06 11
sgp.ps@georgfischer.com
www.georgfischer.com.sg

Spain/Portugal

Georg Fischer S.A.
28046 Madrid
Phone +34(0)91 781 98 90
es.ps@georgfischer.com
www.georgfischer.es

Sweden/Finland

Georg Fischer AB
12523 Älvsjö-Stockholm
Phone +46(0)8 506 775 00
info.se.ps@georgfischer.com
www.georgfischer.se

Switzerland

Georg Fischer
Rohrleitungssysteme (Schweiz) AG
8201 Schaffhausen
Phone +41(0)52 631 30 26
ch.ps@georgfischer.com
www.piping.georgfischer.ch

Taiwan

Georg Fischer Piping Systems
San Chung City, Taipei Hsien
Phone +886 2 8512 2822
Fax +886 2 8512 2823

United Kingdom/Ireland

George Fischer Sales Limited
Coventry, CV2 2ST
Phone +44(0)2476 535 535
uk.ps@georgfischer.com
www.georgfischer.co.uk

USA/Canada/Latin America/Caribbean

Georg Fischer LLC
Tustin, CA 92780-7258
Phone +1(714) 731 88 00
Toll Free 800 854 40 90
us.ps@georgfischer.com
www.us.piping.georgfischer.com

International

Georg Fischer
Piping Systems (Switzerland) Ltd.
8201 Schaffhausen/Switzerland
Phone +41(0)52 631 30 03
Fax +41(0)52 631 28 93
info.export@georgfischer.com
www.export.georgfischer.com